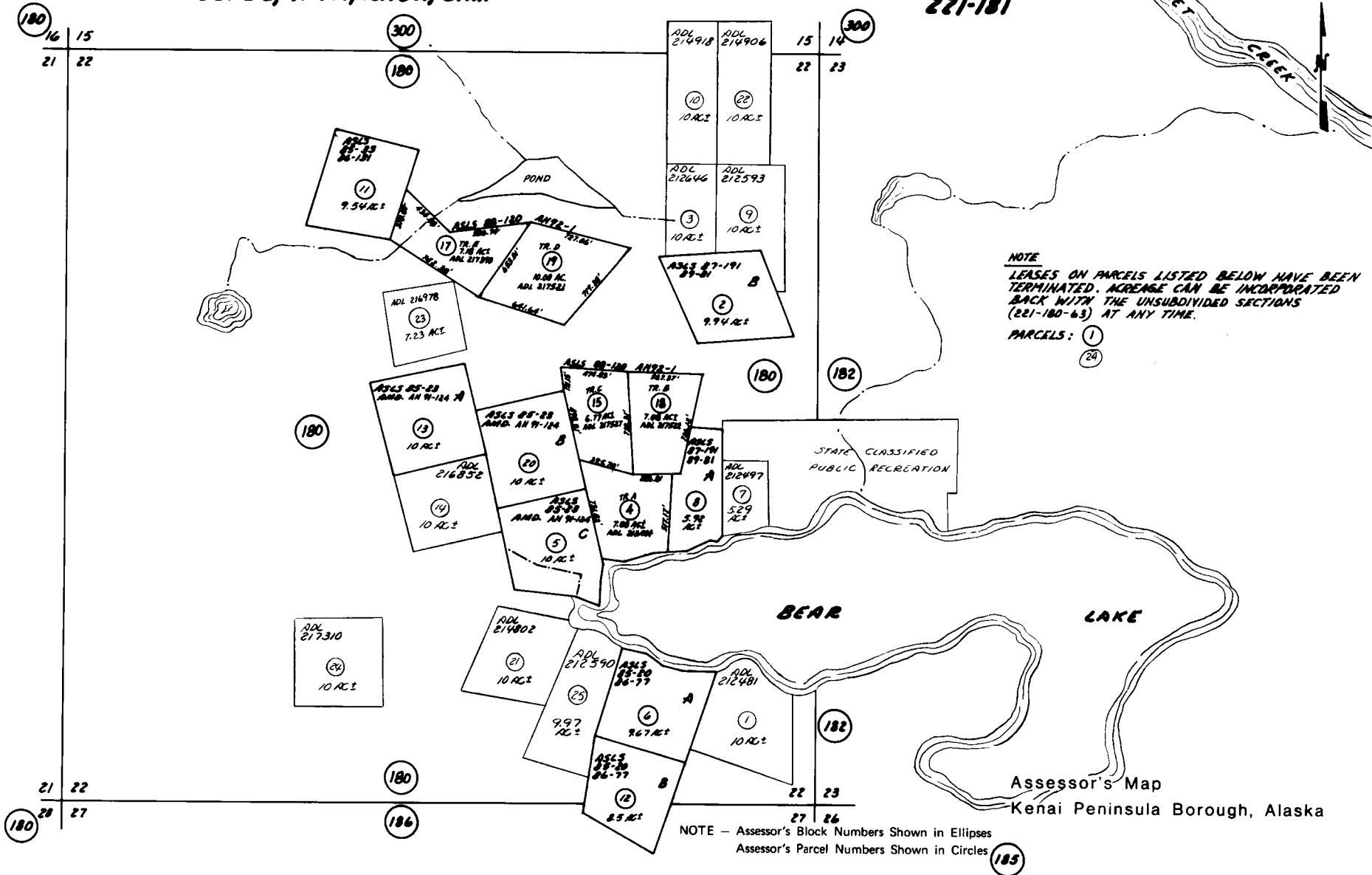


SEC. 22, T. 4N, R. 18W, S. 1M.

221-181



NOTE
 LEASES ON PARCELS LISTED BELOW HAVE BEEN
 TERMINATED. ACREAGE CAN BE INCORPORATED
 BACK WITH THE UNSUBDIVIDED SECTIONS
 (221-180-63) AT ANY TIME.

PARCELS: ①
 ②④

Assessor's Map
 Kenai Peninsula Borough, Alaska

NOTE - Assessor's Block Numbers Shown in Ellipses
 Assessor's Parcel Numbers Shown in Circles

185