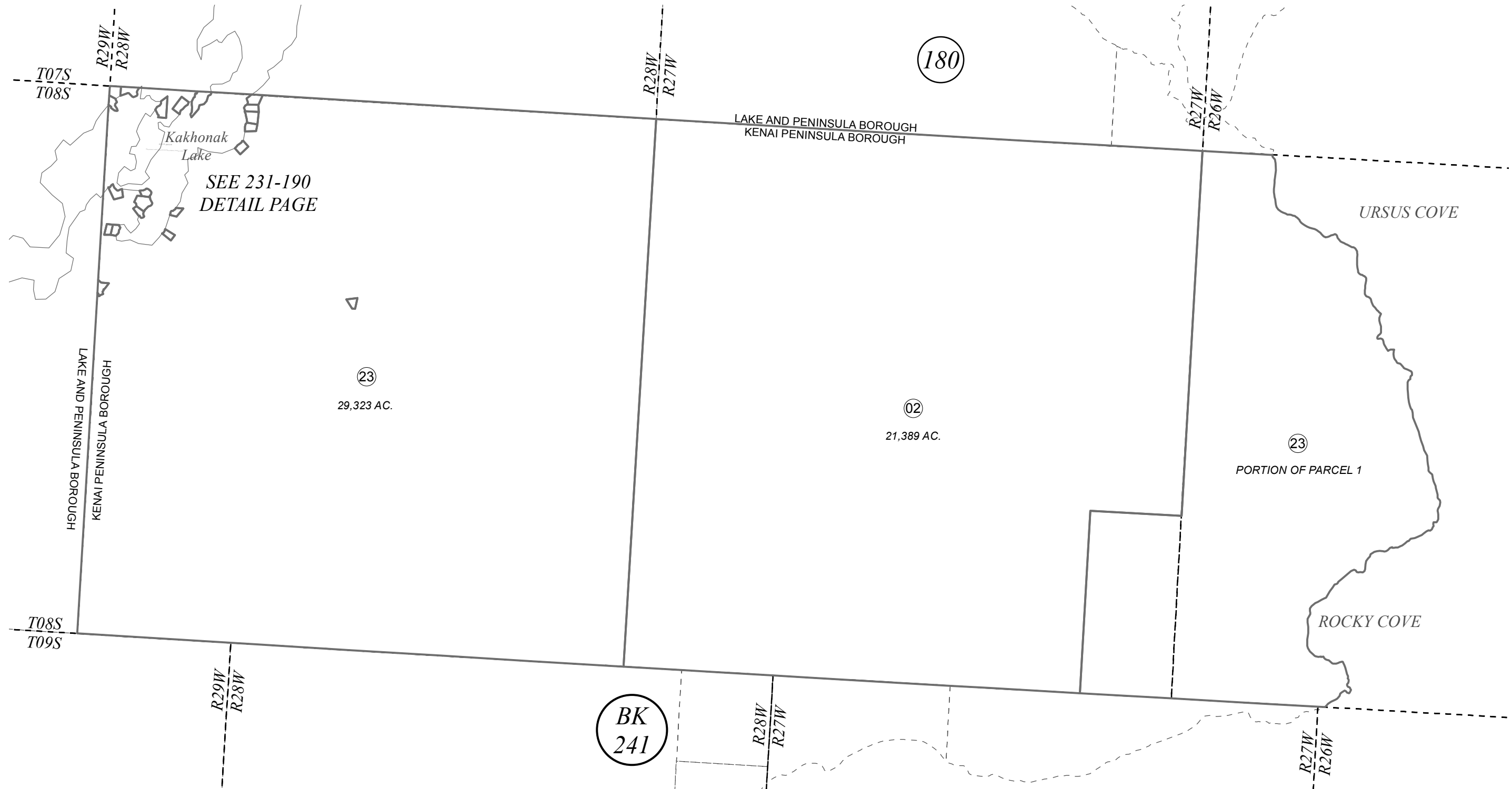


T08S, R26W, R27W, 28W, S.M.

231-190



SEE 231-190
DETAIL PAGE

LAKE AND PENINSULA BOROUGH
KENAI PENINSULA BOROUGH

LAKE AND PENINSULA BOROUGH
KENAI PENINSULA BOROUGH

PORTION OF PARCEL 1



0 2,500 5,000 Feet

SEPTEMBER 15, 2015

For 2016 assessment roll		
Delete	Add	Revise
To		
01	03-23	

Assessor's Map
Kenai Peninsula Borough

A.S.L.S. KAKHONAK LAKE REMOTE RECREATIONAL CABIN SITES IL2015003

Note- Assessor's block Numbers Shown in Elipses
Assessor's Parcel Numbers Shown in Circles

This map is prepared
for Kenai Peninsula
Borough Assessing Dept.
use only and is not
intended for conveyance
nor is it a survey.