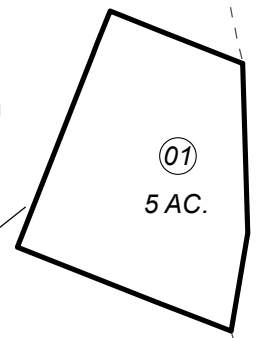
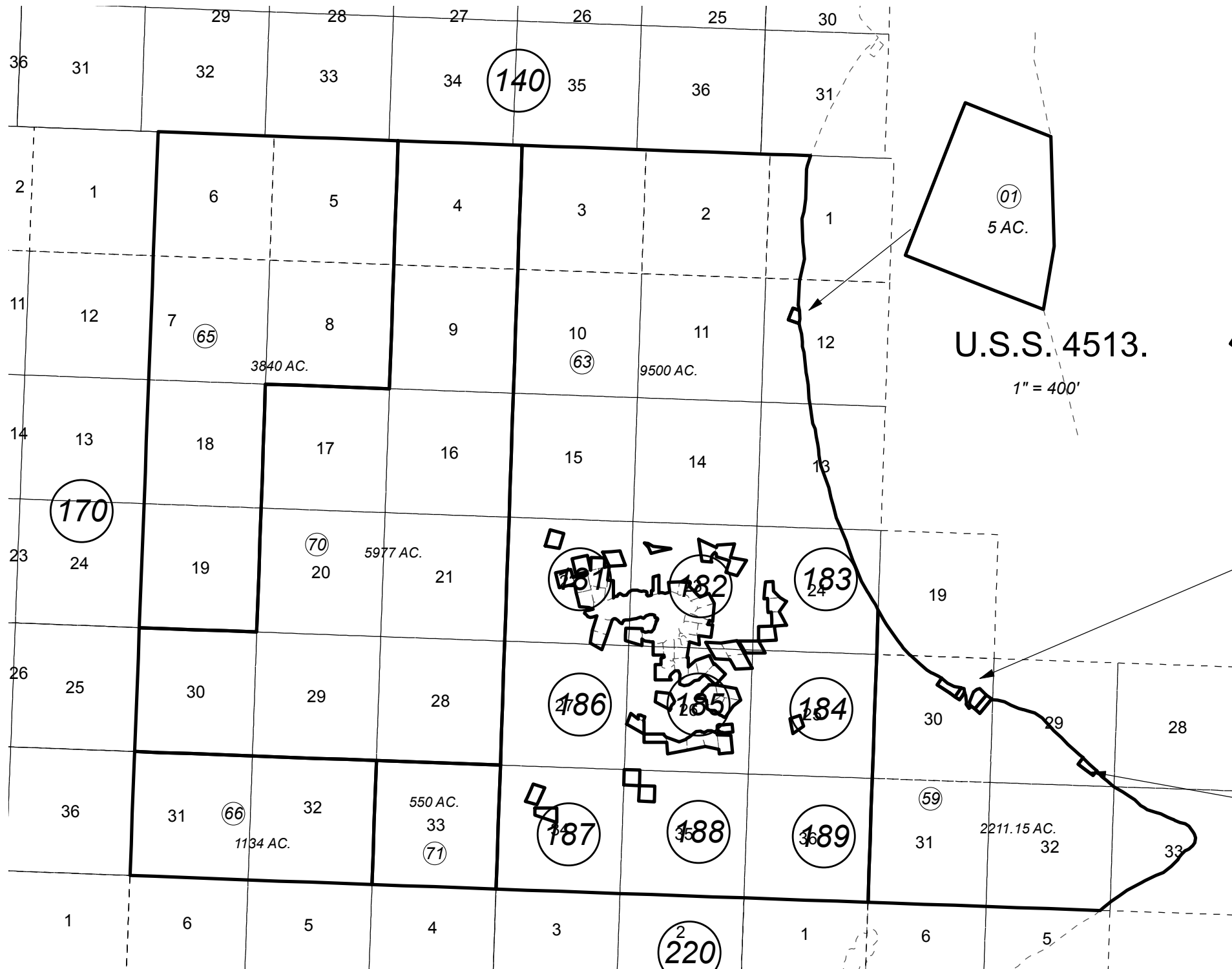
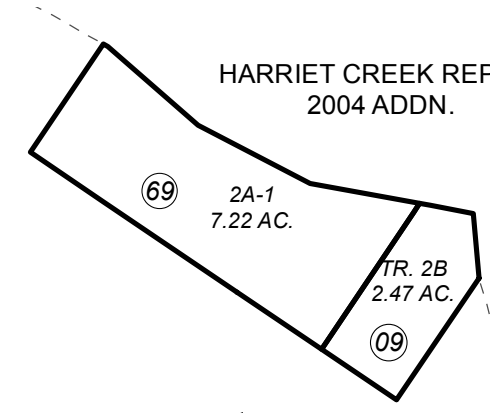


T04N, R17W & R18W, S.M.

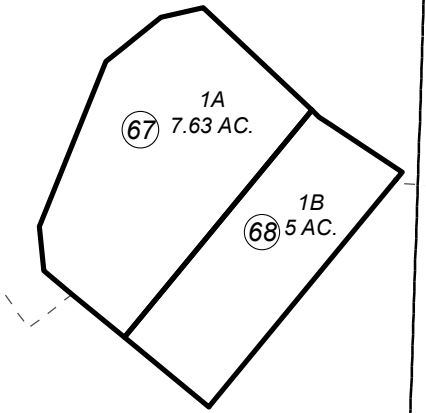
221-180



U.S.S. 4513.
1" = 400'

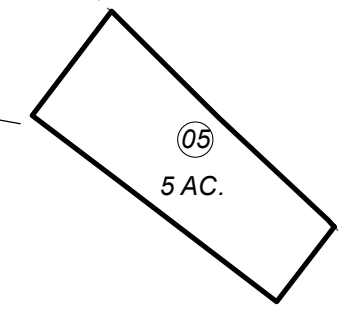


HARRIET CREEK REPLAT
2004 ADDN.



MCMICHAELS ROCK SUBD.

HARRIET CREEK
SUBD.
1" = 500'



U.S.S. 4510
1" = 500'



1 inch = 5,300 feet

APRIL 3, 2013

For 2013 assessment roll		
Delete	Add	Revise
To		
64	70,71	

Assessor's Map
Kenai Peninsula Borough

- US SURVEY 4510 AN0004510
- US SURVEY 4511 AN0004511
- US SURVEY 4513 AN0004513
- HARRIET CREEK SUB AN0790029
- MCMICHAEL'S ROCK SUB AN2001162
- HARRIET CREEK REPLAT 2004 ADDN AN2004165

This map is prepared for Kenai Peninsula Borough Assessing Dept. use only and is not intended for conveyance nor is it a survey.
Note- Assessor's block Numbers Shown in Elipses
Assessor's Parcel Numbers Shown in Circles