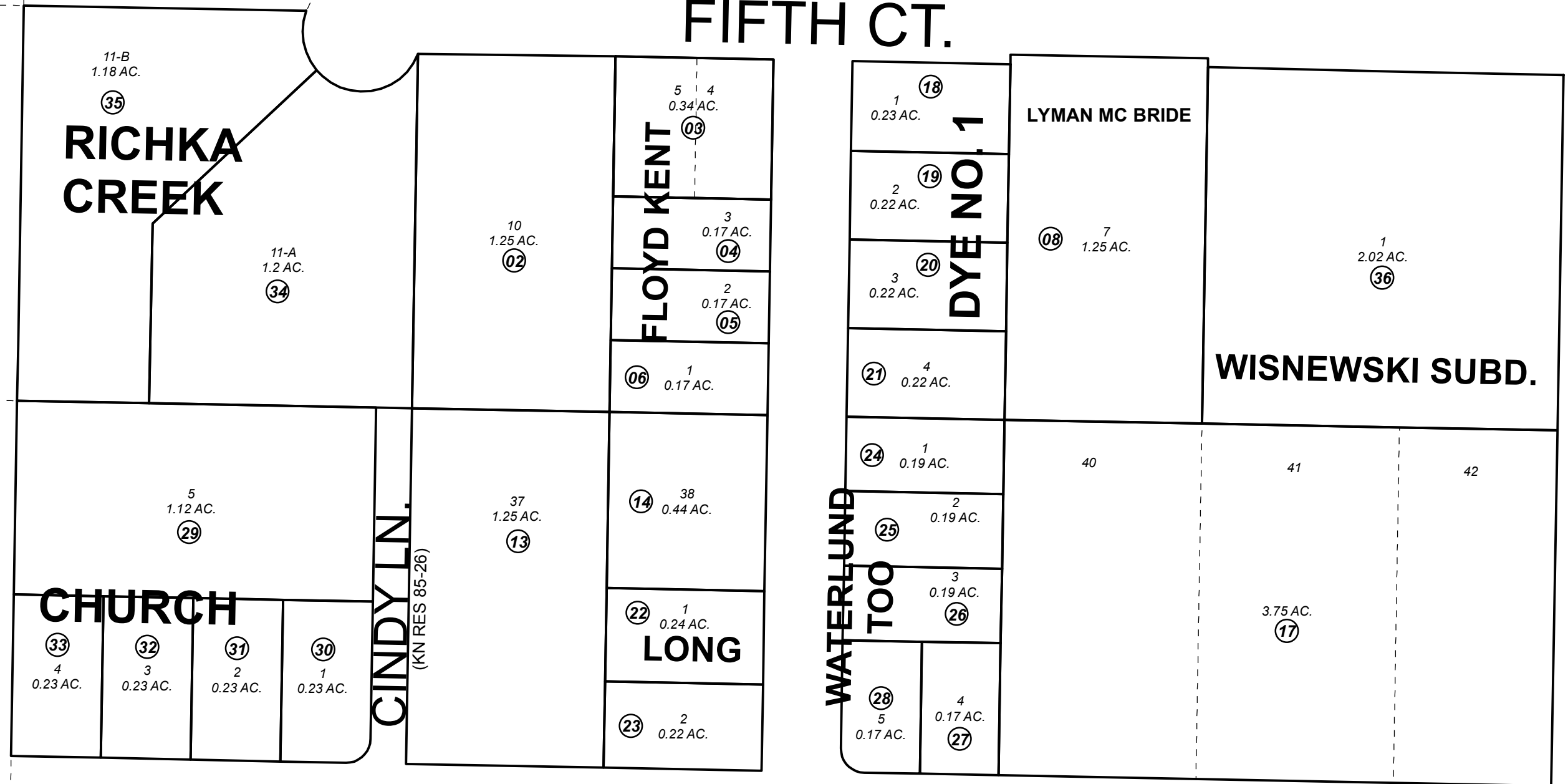


010

# FIFTH CT.



040

180

# FOURTH AVE.

090

OCTOBER 26, 2016

For 2017 assessment roll		
Delete	Add	Revise
To		
09,10	36	

Assessor's Map  
Kenai Peninsula Borough

- KN0001100 FLOYD KENT SUB
- KN0830168 LYMAN MCBRIDE REPLAT LOT 7
- KN0001454 DYE SUB NO 1
- KN0001538 LONG SUB
- KN0001722 WATERLUND TOO SUB
- KN0800006 CHURCH SUB
- KN0850012 RICHKA CREEK SUB
- KN2016056 WISNEWSKI SUB

This map is prepared for Kenai Peninsula Borough Assessing Dept. use only and is not intended for conveyance nor is it a survey.

Note- Assessor's block Numbers Shown in Ellipses  
Assessor's Parcel Numbers Shown in Circles

