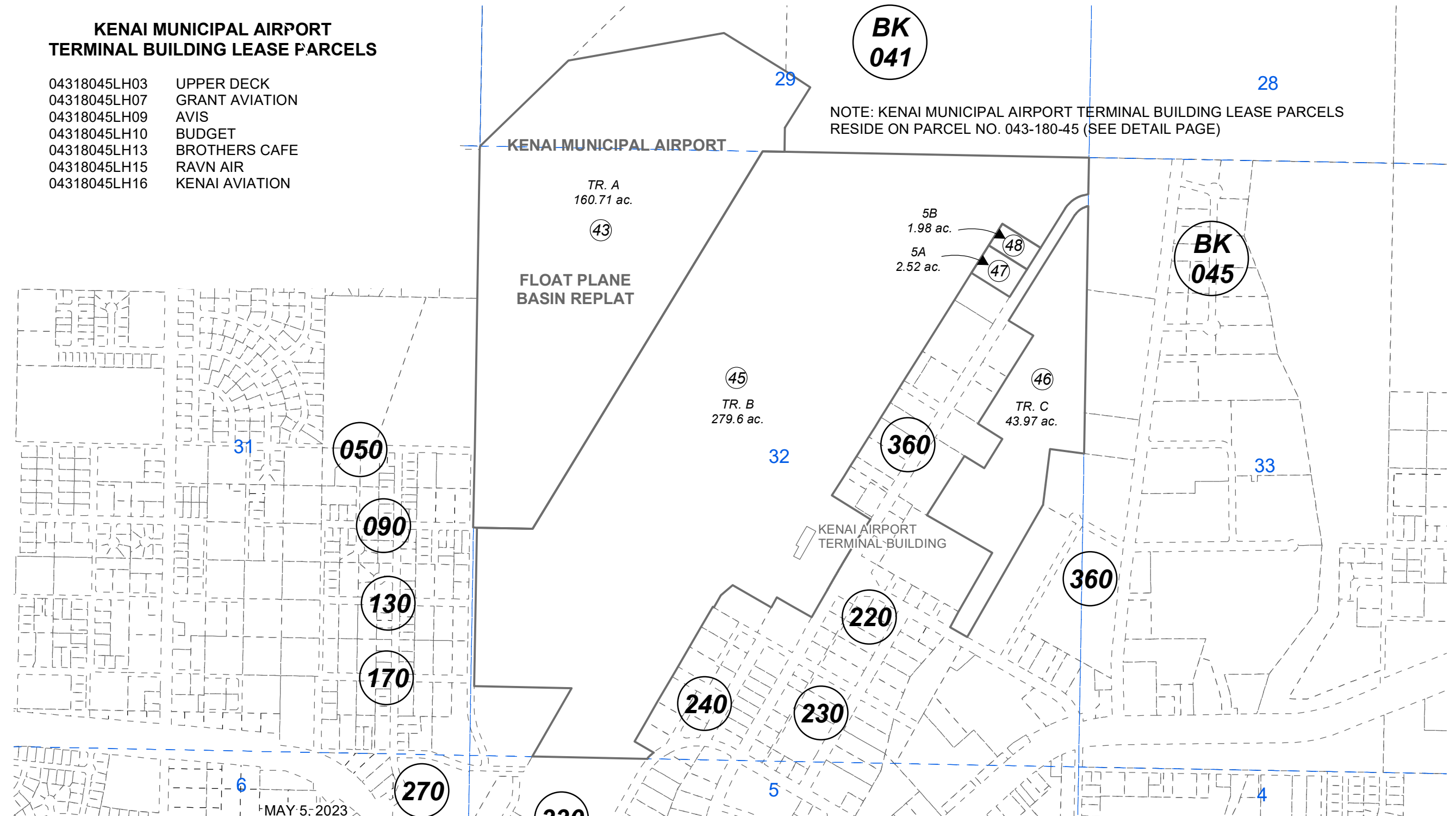


**KENAI MUNICIPAL AIRPORT
TERMINAL BUILDING LEASE PARCELS**

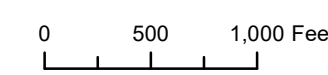
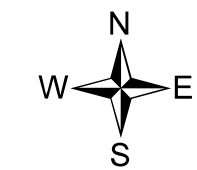
- 04318045LH03 UPPER DECK
- 04318045LH07 GRANT AVIATION
- 04318045LH09 AVIS
- 04318045LH10 BUDGET
- 04318045LH13 BROTHERS CAFE
- 04318045LH15 RAVN AIR
- 04318045LH16 KENAI AVIATION

BK 041

NOTE: KENAI MUNICIPAL AIRPORT TERMINAL BUILDING LEASE PARCELS RESIDE ON PARCEL NO. 043-180-45 (SEE DETAIL PAGE)



MAY 5, 2023



For 2023 assessment roll		
Delete	Add	Revise
To		45
(UPDATED LEASEHOLD INFORMATION)		

Assessor's Map
Kenai Peninsula Borough

USS SURVEY 4969
KENAI MUNICIPAL AIRPORT FLOAT PLANE BASIN REPLAT KN2009020
FBO SUB NO 10 KN2021058

This map is prepared for Kenai Peninsula Borough Assessing Dept. use only and is not intended for conveyance nor is it a survey.

Note- Assessor's block Numbers Shown in Ellipses
Assessor's Parcel Numbers Shown in Circles