

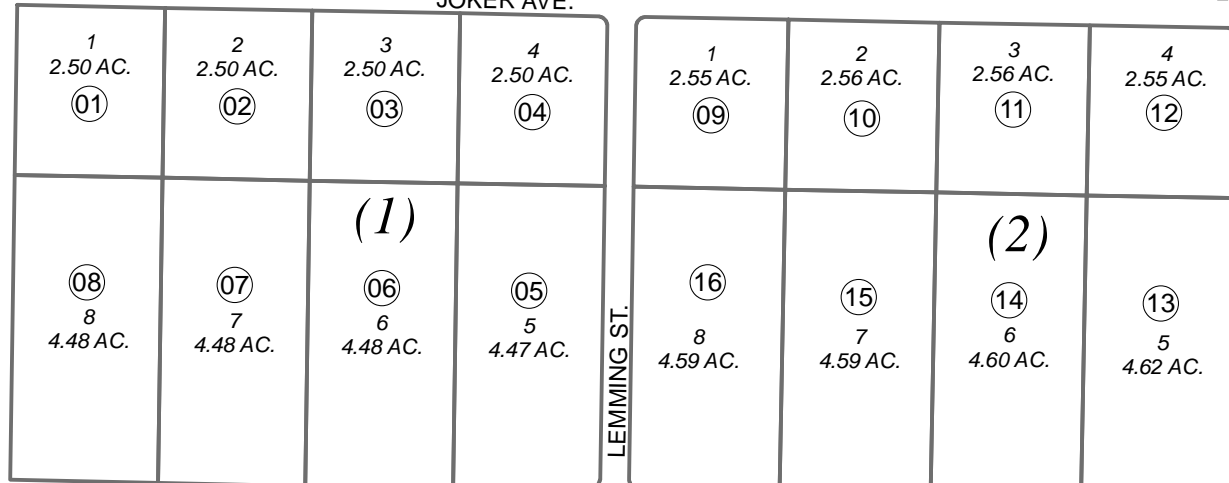
SE1/4 SEC. 18, T03N, R11W, S.M.

133-084

BEAVER BROOK ESTATES

400

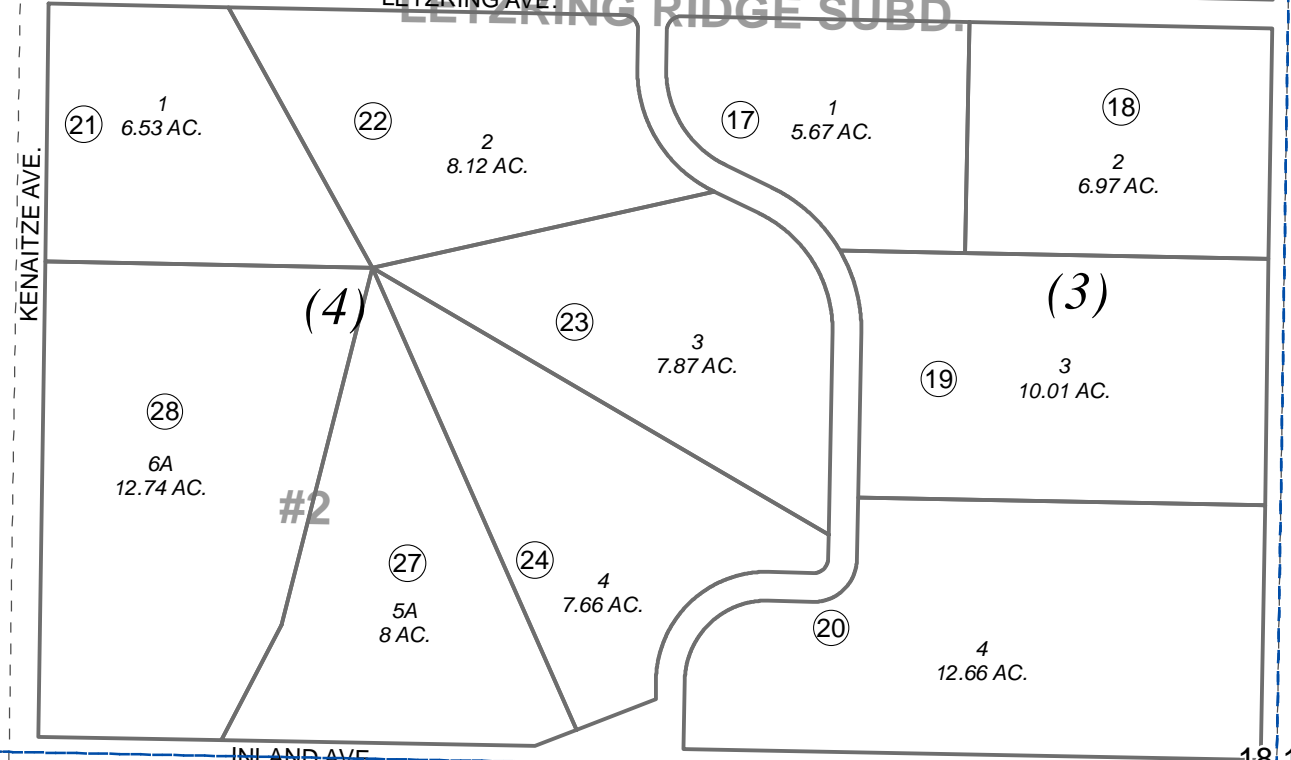
JOKER AVE.



LETZRING RIDGE SUBD.

081

081



KENAITZE AVE.

BADGER ST.

INLAND AVE.

18:17
19:20

082



0 125 250 500 Feet

JULY 16, 2013

For 2014 assessment roll		
Delete	Add	Revise
To		18
(CORRECTED ACREAGE)		

Assessor's Map
Kenai Peninsula Borough

LETZRING RIDGE SUB KN2007147
LETZRING RIDGE SUB #2 KN2010007

This map is prepared for Kenai Peninsula Borough Assessing Dept. use only and is not intended for conveyance nor is it a survey.

Note- Assessor's block Numbers Shown in Ellipses
Assessor's Parcel Numbers Shown in Circles