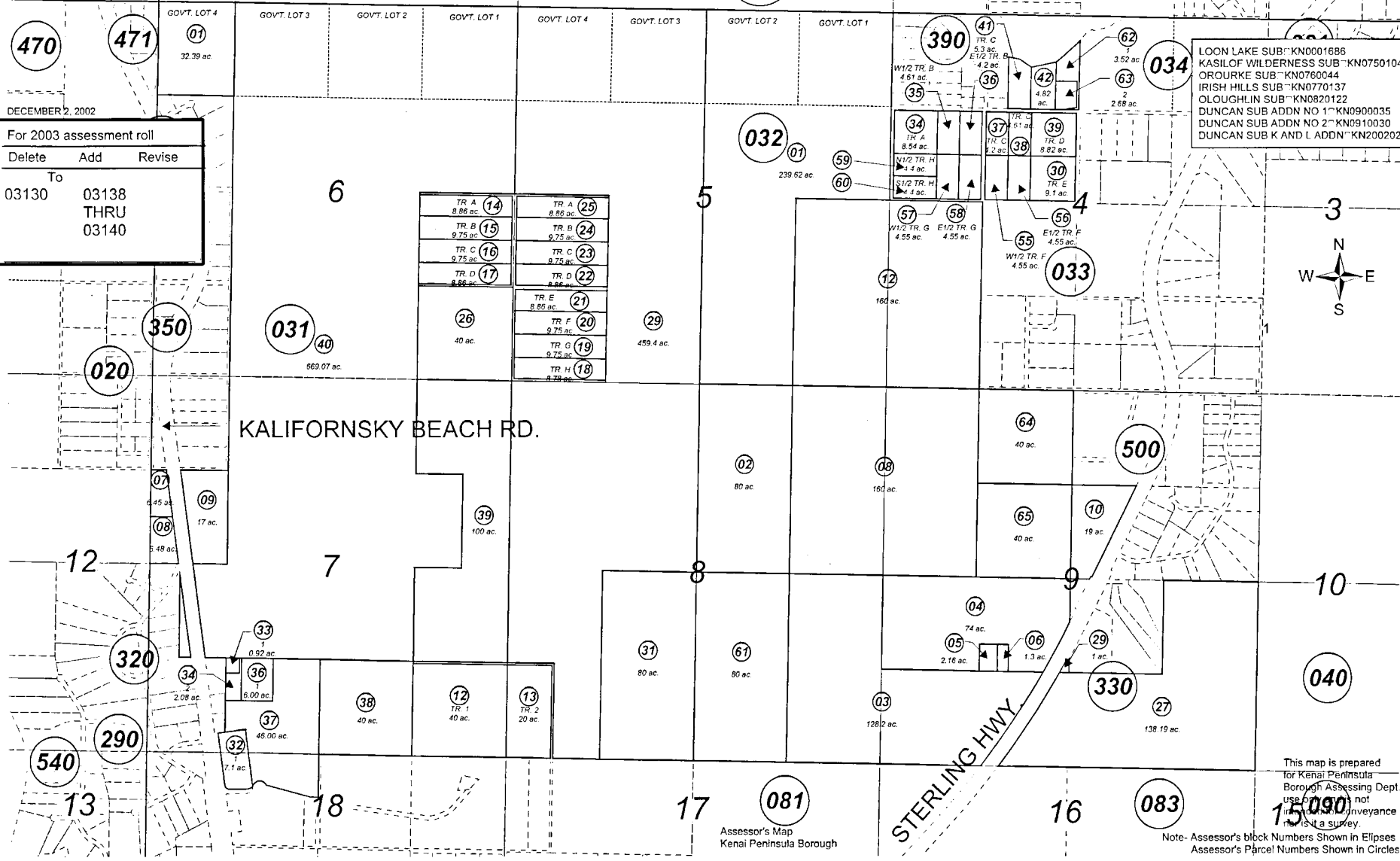


SEC. 4-9, T03N, R11W, S.M.

32 BK 131

133-030



470 471 01
32.39 ac

DECEMBER 2, 2002

For 2003 assessment roll		
Delete	Add	Revise
To		
03130	03138	
	THRU	
	03140	

TR A (14) 8.86 ac	TR A (25) 8.86 ac
TR B (15) 9.75 ac	TR B (24) 9.75 ac
TR C (16) 9.75 ac	TR C (23) 9.75 ac
TR D (17) 8.86 ac	TR D (22) 8.86 ac
TR E (21) 8.86 ac	TR E (20) 9.75 ac
TR F (20) 9.75 ac	TR G (19) 9.75 ac
TR H (18) 8.78 ac	

LOON LAKE SUB "KN0001686
KASILOF WILDERNESS SUB "KN0750104
OROURKE SUB "KN0760044
IRISH HILLS SUB "KN0770137
OLOUGHLIN SUB "KN0820122
DUNCAN SUB ADDN NO 1 "KN0900035
DUNCAN SUB ADDN NO 2 "KN0910030
DUNCAN SUB K AND L ADDN "KN2002028



This map is prepared for Kenai Peninsula Borough Assessing Dept. use only. It is not a warranty of conveyance. It is a survey.
15090
Note- Assessor's block Numbers Shown in Ellipses
Assessor's Parcel Numbers Shown in Circles

Assessor's Map
Kenai Peninsula Borough