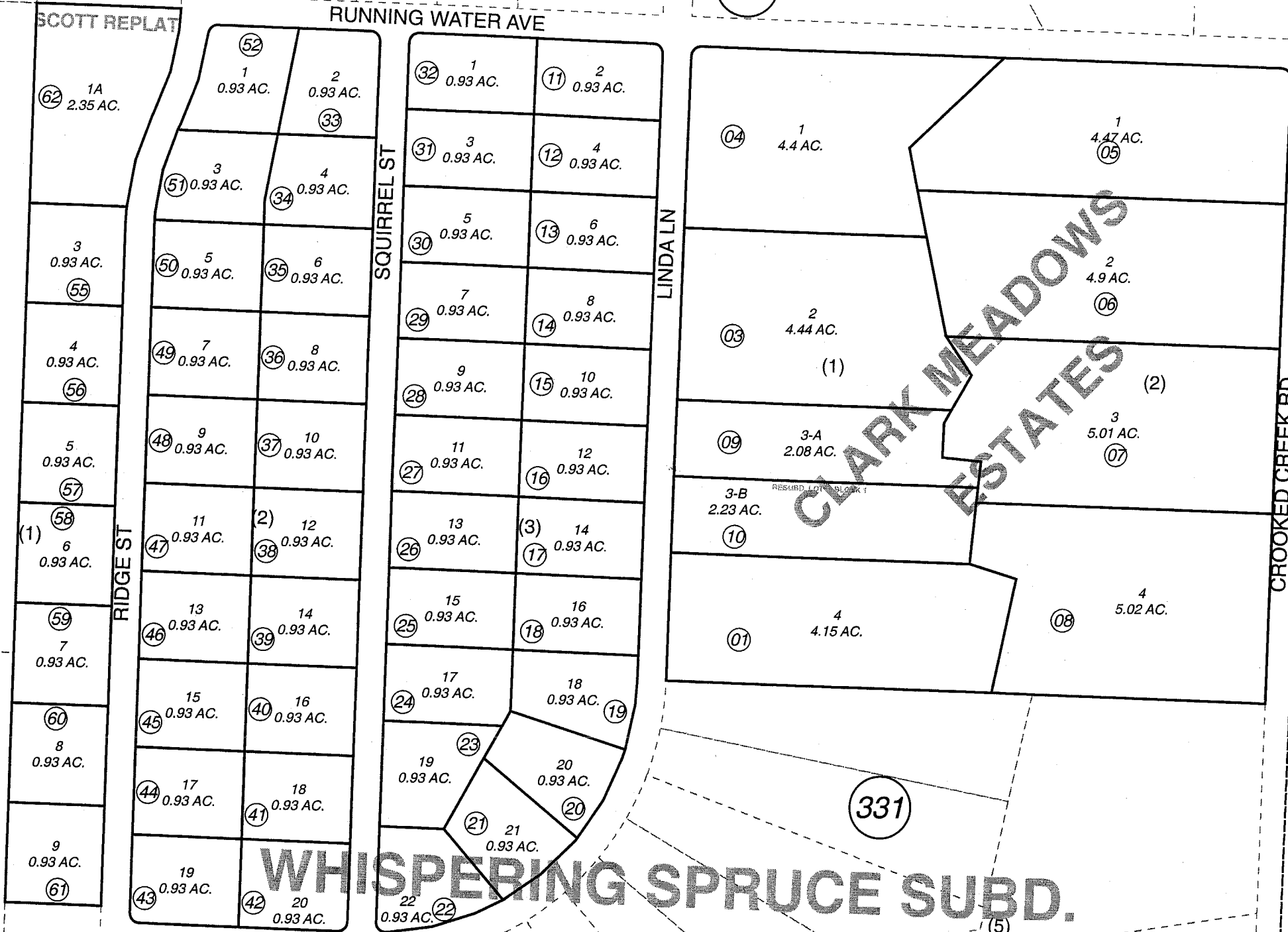


POR. SE1/4 SEC. 13, T02N, R12W, S.M.

270

137-330

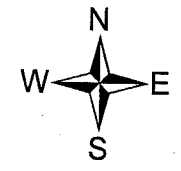
SEC. 13
SEC. 14



050

060

331



JANUARY 5, 2006

| For 2006 assessment roll | | |
|--------------------------|-----|--------|
| Delete | Add | Revise |
| To | | |
| 53,54 | 62 | |

Assessor's Map
Kenai Peninsula Borough

CLARK MEADOWS ESTATES SUB □ KN0790096
 CLARK MEADOWS ESTATES RESUB □ KN0790193
 WHISPERING SPRUCE SUB □ KN0840020
 WHISPERING SPRUCE SUB SCOTT REPLAT □ KN2005116

This map is prepared for Kenai Peninsula Borough Assessing Dept. use only and is not intended for conveyance nor is it a survey.
 Note- Assessor's block Numbers Shown in Elipses
 Assessor's Parcel Numbers Shown in Circles