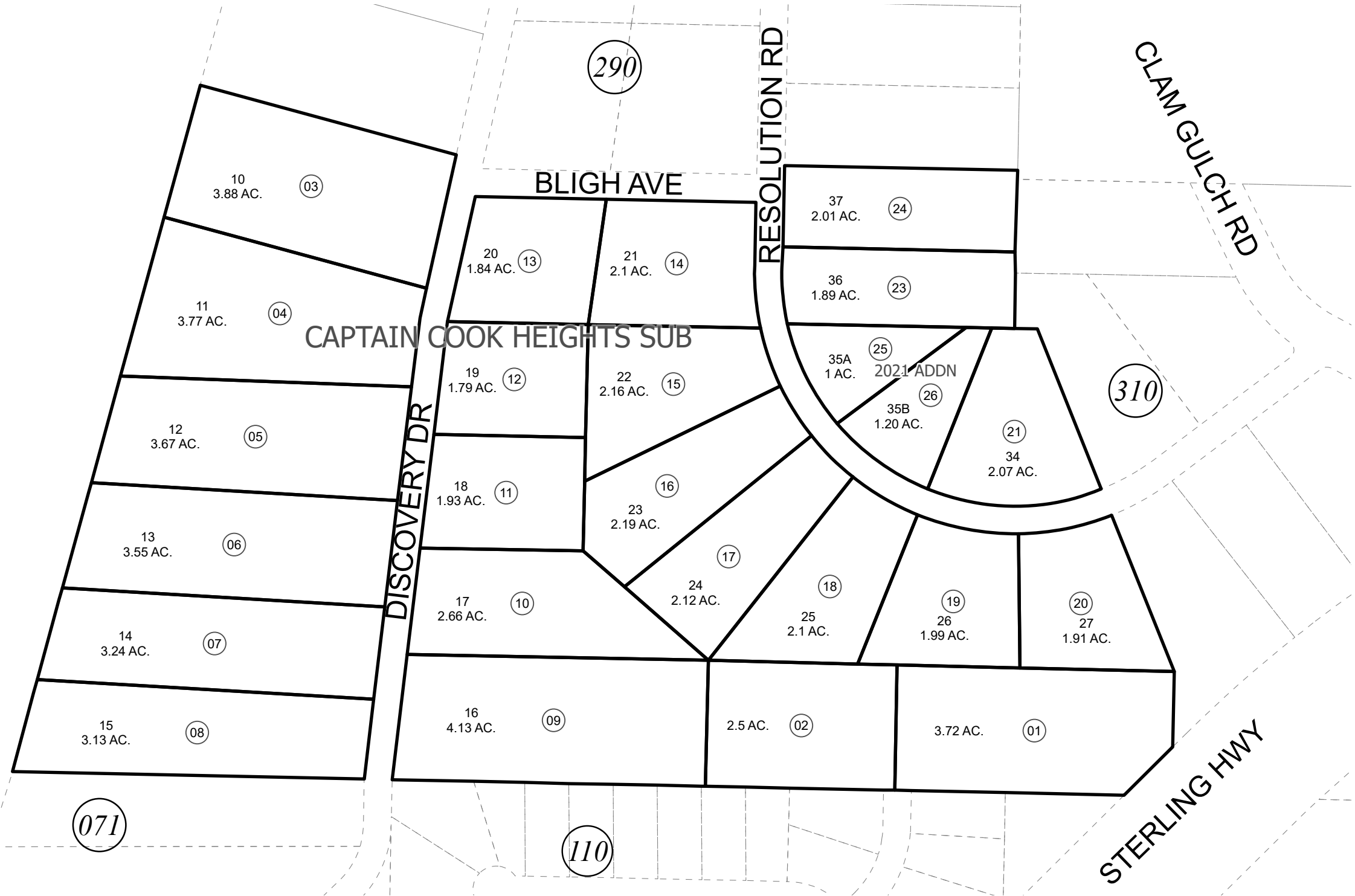


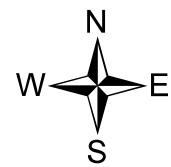
POR. SEC. 29, T02N, R12W, S.M.

137-300

COOK  
INLET



JUNE 11, 2022



0 75 150 300 Feet

For 2023 assessment roll		
Delete	Add	Revise
	To	
22	25,26	

Assessor's Map  
Kenai Peninsula Borough

CAPTAIN COOK HEIGHTS SUB KN0790085  
CAPTAIN COOK HEIGHTS 2021 ADDN KN2022003

This map is prepared for Kenai Peninsula Borough Assessing Dept. use only and is not intended for conveyance nor is it a survey.

Note- Assessor's block Numbers Shown in Elipses  
Assessor's Parcel Numbers Shown in Circles