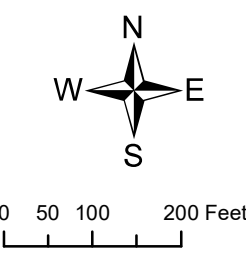
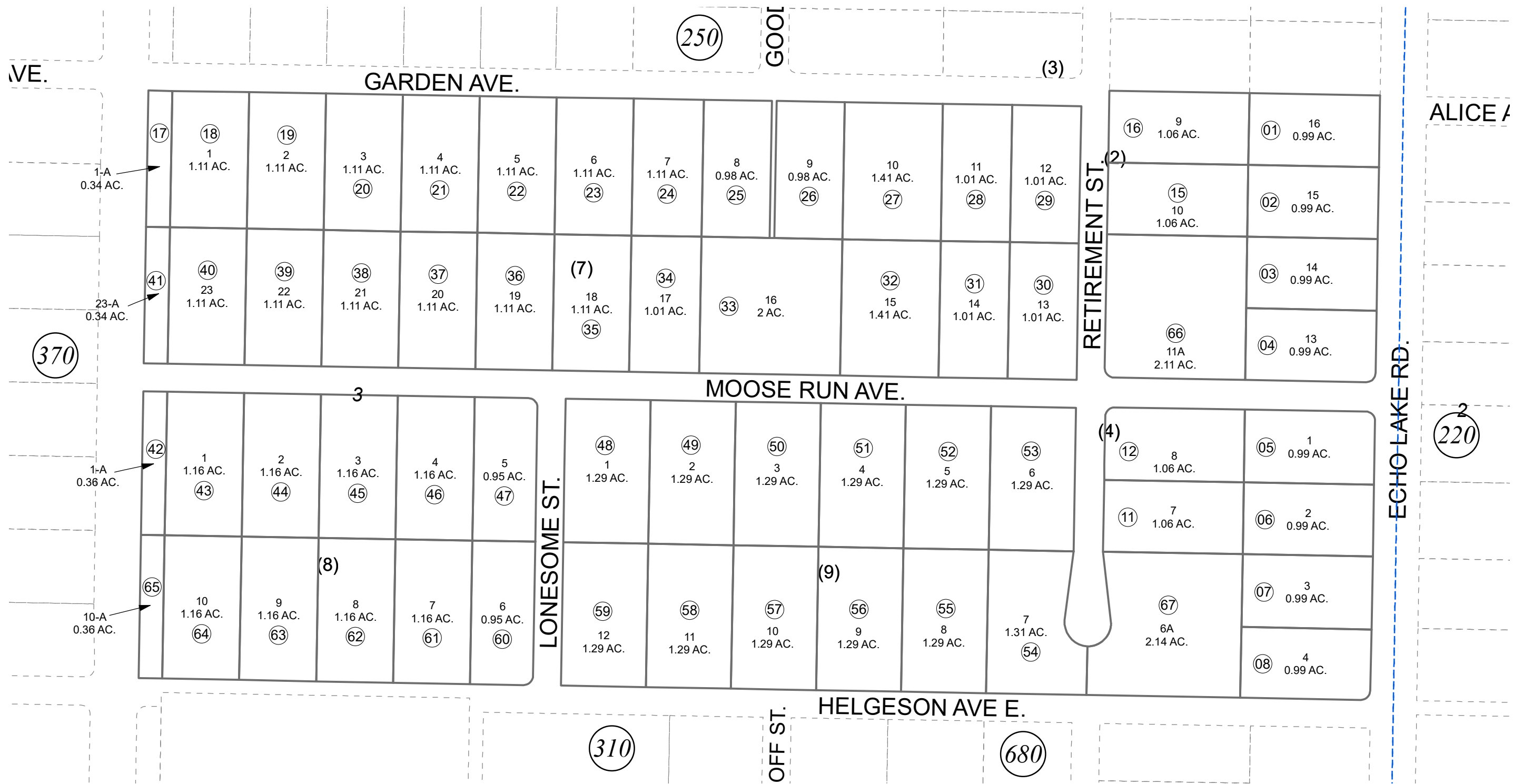


POR. SEC. 3, T04N, R11W, S.M.

131-380



DECEMBER 1, 2021

For 2022 assessment roll		
Delete	Add	Revise
To		
09,10	67	

Assessor's Map
Kenai Peninsula Borough

GOODRICH ACRES NO 1 KN0750073
 GOODRICH ACRES NO 2 KN0790172
 GOODRICH ACRES NO 3 KN0950061
 GOODRICH ACRES SANCHIS REPLAT KN2021077

Note- Assessor's block Numbers Shown in Ellipses
 Assessor's Parcel Numbers Shown in Circles

This map is prepared for Kenai Peninsula Borough Assessing Dept. use only and is not intended for conveyance nor is it a survey.