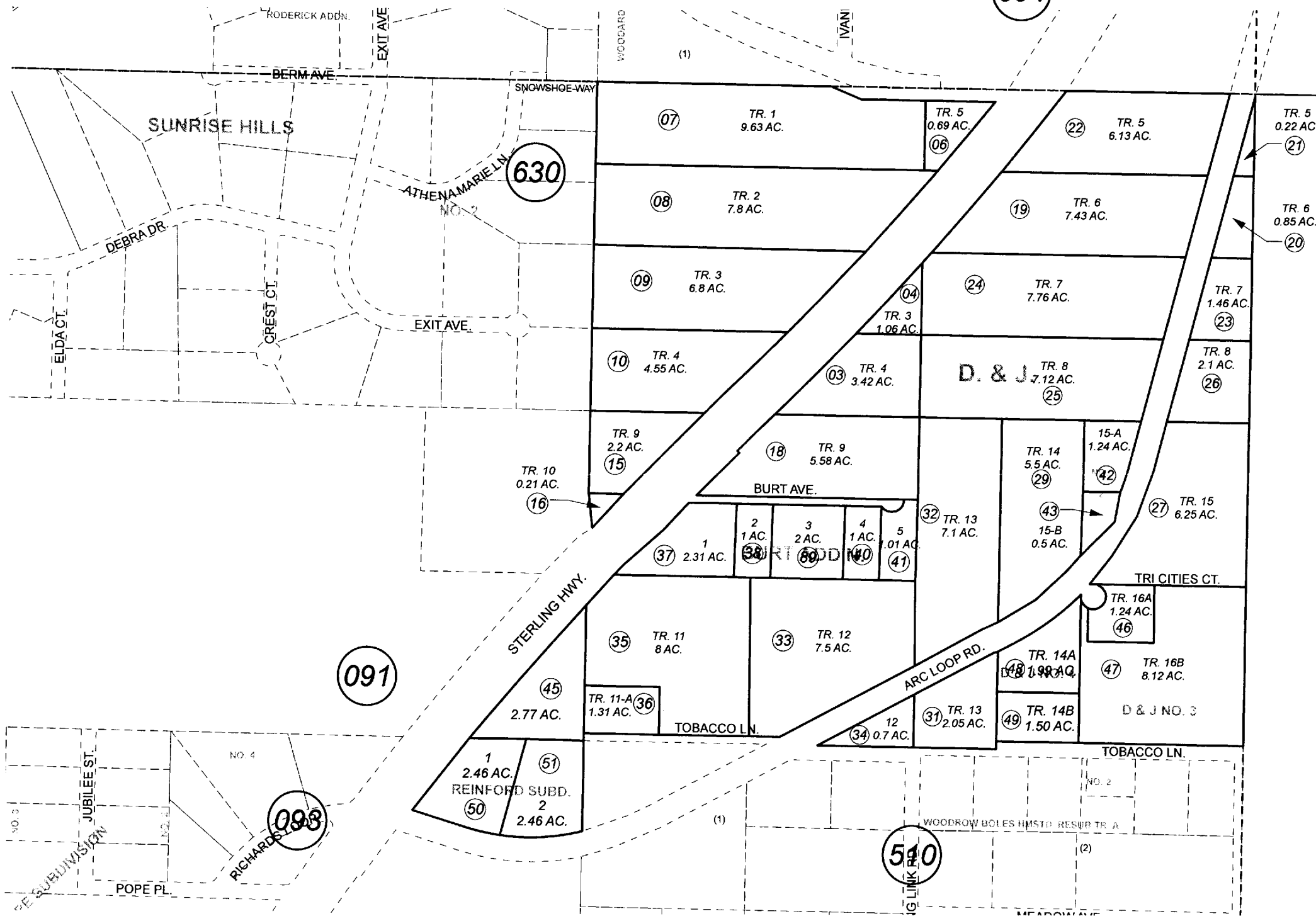


NE 1/4 SEC. 23, T04N, R11W, S.M.

094

131-300

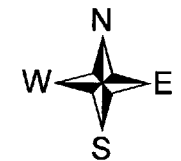


091

092

093

540



0 200 400 800 Feet

JANUARY 4, 2010

For 2010 assessment roll		
Delete	Add	Revise
To		
44	50,51	

Assessor's Map  
Kenai Peninsula Borough

D & J SUB RESUB TRACT 11 KN0780122  
 D & J SUB AMENDED KN0840040  
 D & J SUB BURT ADDN KN0840069  
 D & J SUB NO 2 KN0840178  
 D & J SUB NO 3 KN0990019  
 D & J SUB NO 4 KN2006094  
 REINFORD SUB KN2009081

This map is prepared for Kenai Peninsula Borough Assessing Dept. use only and is not intended for conveyance nor is it a survey.  
 Note- Assessor's block Numbers Shown in Ellipses  
 Assessor's Parcel Numbers Shown in Circles