

POR. SE1/4 SEC. 13, T02N, R12W, S.M.

137-331

WHISPERING SPRUCE SUBD. 2019 REPLAT

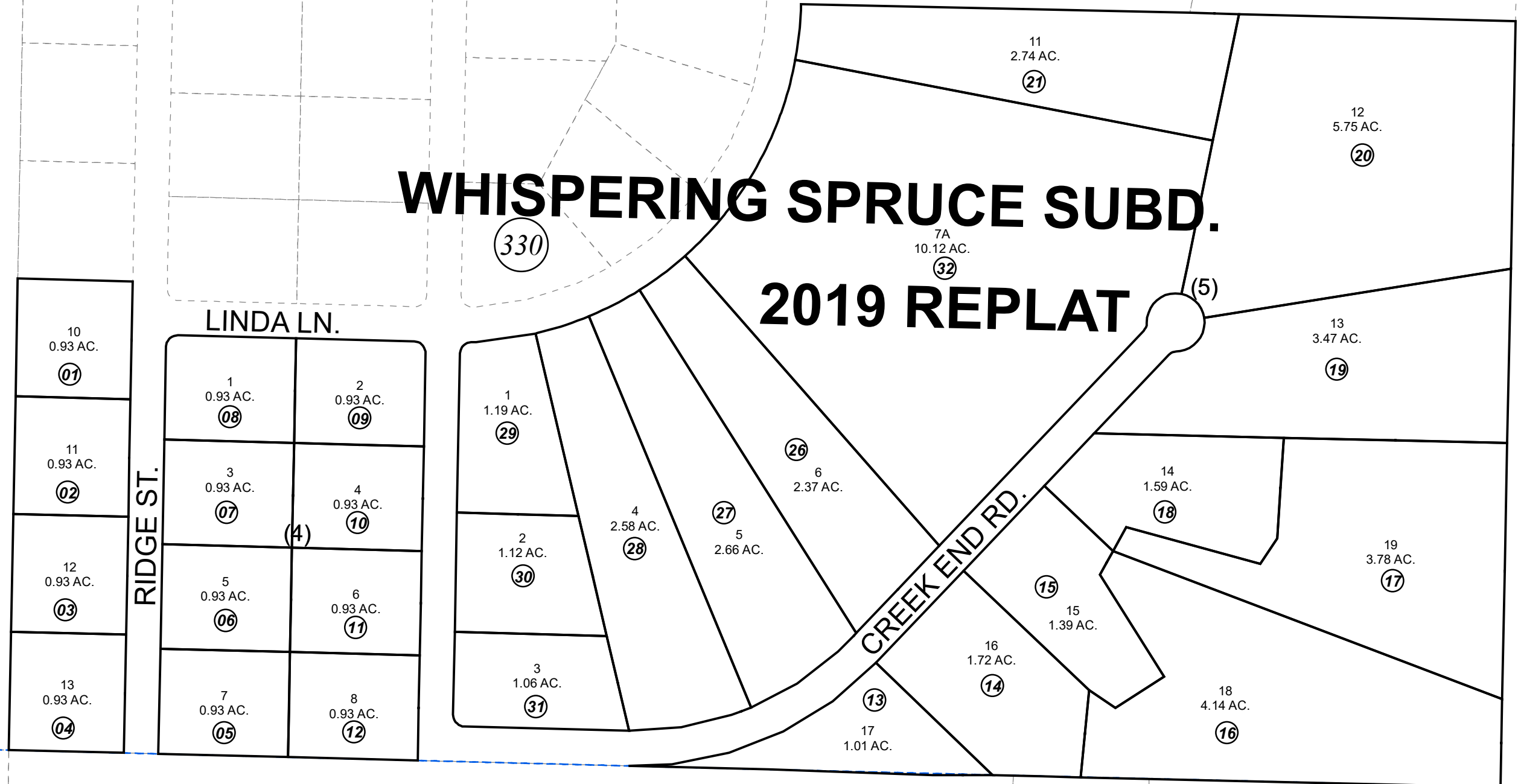
330

330

332

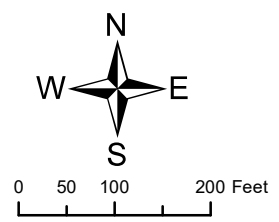
050

050



DECEMBER 18, 2019

For 2020 assessment roll		
Delete	Add	Revise
To		
22-25	32	



Assessor's Map
Kenai Peninsula Borough

WHISPERING SPRUCE SUB KN0840020
WHISPERING SPRUCE SUB 2019 REPLAT KN2019061

Note- Assessor's block Numbers Shown in Ellipses
Assessor's Parcel Numbers Shown in Circles

This map is prepared for Kenai Peninsula Borough Assessing Dept. use only and is not intended for conveyance nor is it a survey.