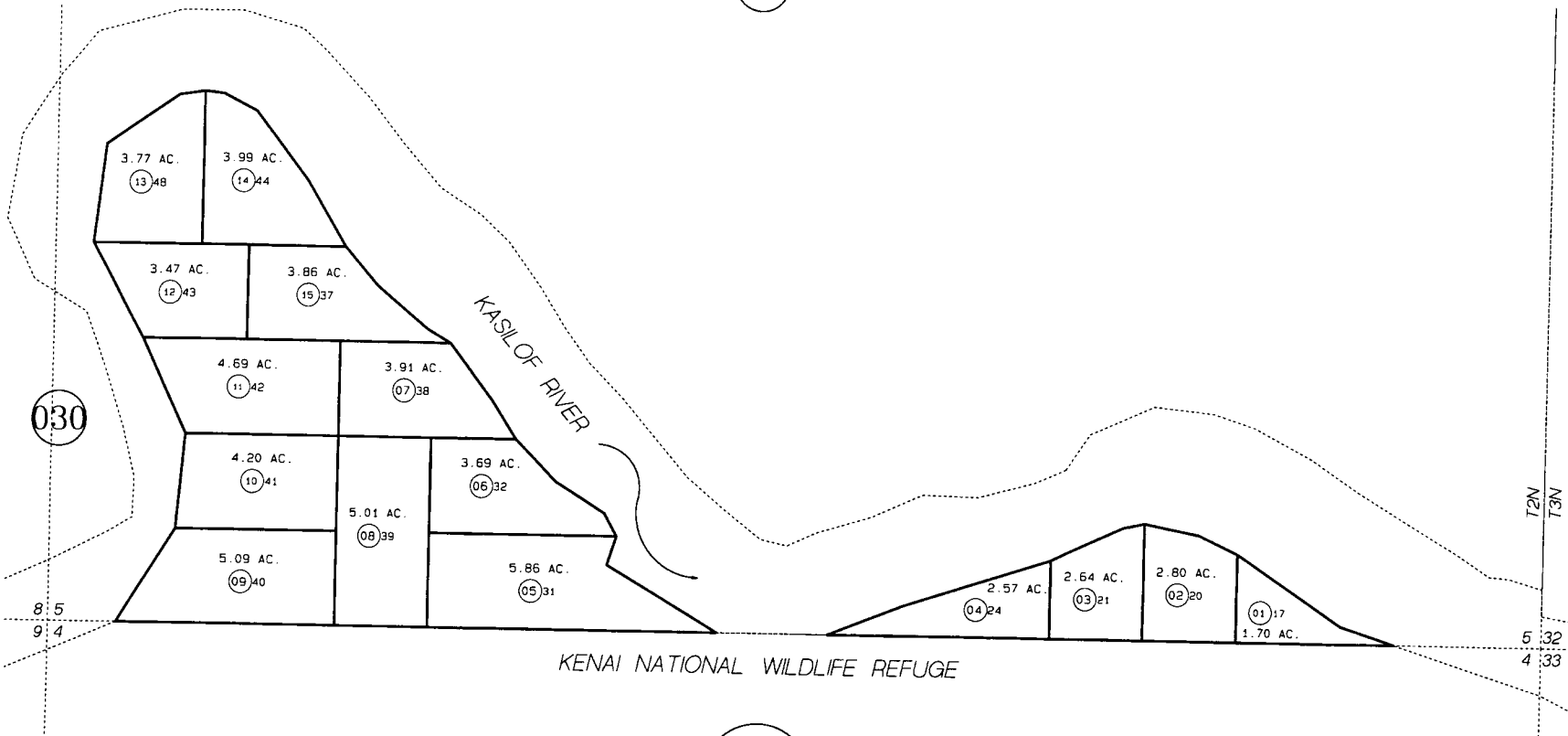


030



BK
135

DATE: JAN. 27, 2000

FOR 2000 ASSESSMENT ROLL

DELETE	ADD	REVISED
--------	-----	---------



TO
NEW
PAGE

Assessor's Map
Kenai Peninsula Borough

THIS MAP IS PREPARED
FOR KENAI PENINSULA
BOROUGH ASSESSING DEPT
USE ONLY, AND IS NOT
INTENDED FOR CONVEYANCE.
NOR IS IT A SURVEY.

NOTE - Assessor's Block Numbers Shown in Ellipses
Assessor's Parcel Numbers Shown in Circles