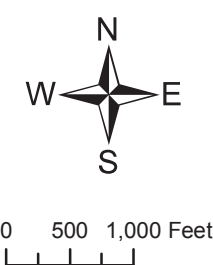
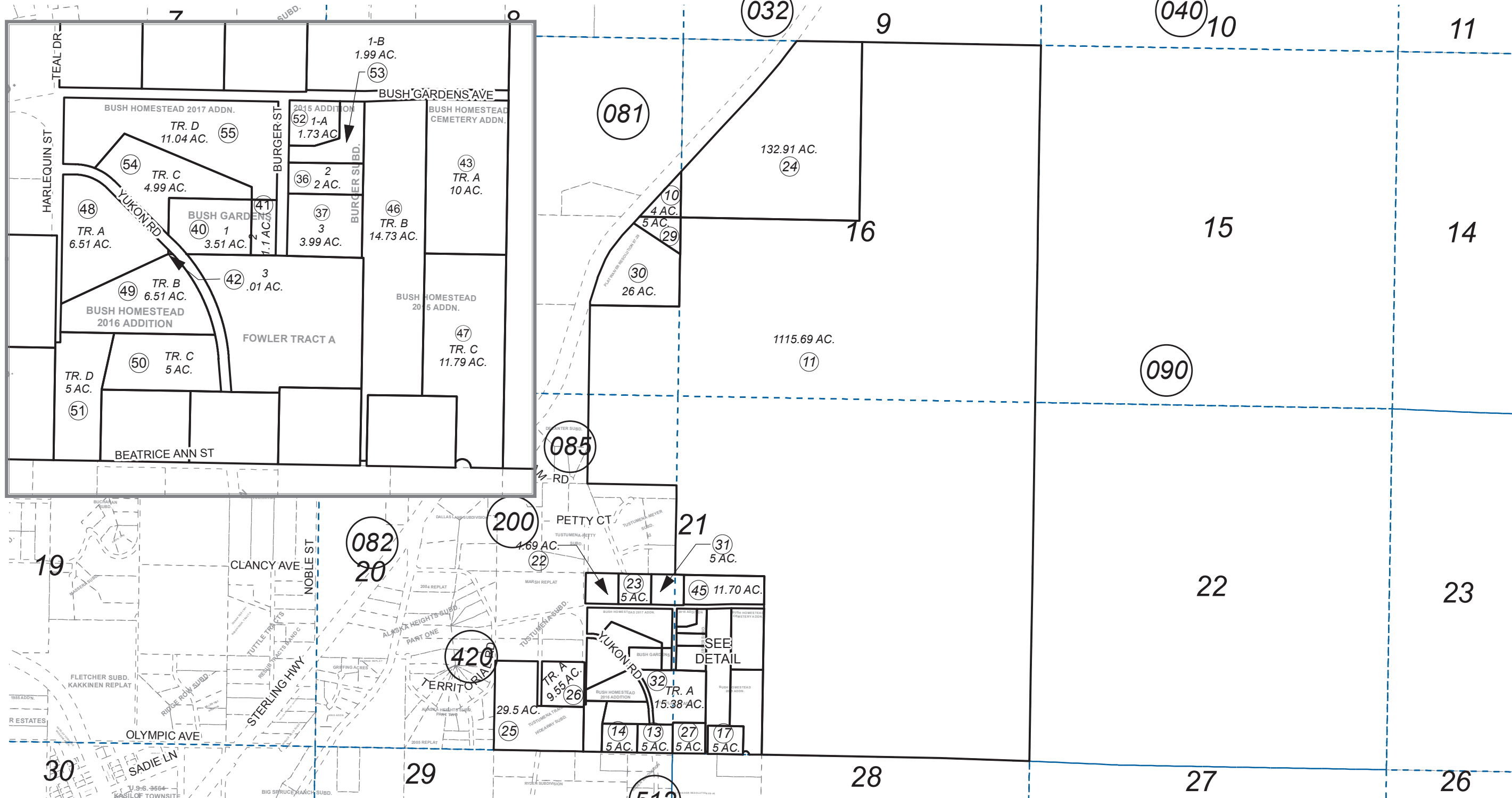


POR. SEC. 16,17,20,21, T03N, R11W, S.M.

133-083



JANUARY 3, 2018

For 2018 assessment roll		
Delete	Add	Revise
To		
38	54,55	

Assessor's Map
Kenai Peninsula Borough

TUSTUMENA TRAIL HIDEAWAY SUB KN0870013
 PLAT WAIVER RESOLUTION 97-20 KN0977197
 FOWLER TRACT A KN2004117
 BURGER SUB KN2004120
 BUSH GARDENS KN2009019
 BUSH HOMESTEAD CEMETERY ADDN KN2009080
 BUSH HOMESTEAD 2015 ADDN KN2015033
 BUSH HOMESTEAD 2016 ADDN KN2016021
 BURGER SUB 2015 ADDN KN2016065
 BUSH HOMESTEAD 2017 ADDN KN2017071

Note- Assessor's block Numbers Shown in Ellipses
 Assessor's Parcel Numbers Shown in Circles

This map is prepared for Kenai Peninsula Borough Assessing Dept. use only and is not intended for conveyance nor is it a survey.