

JULIANA

TRI RD.

TRI RD

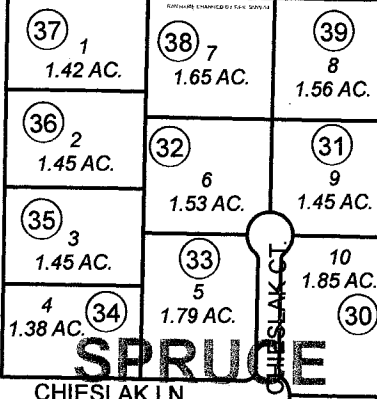
023

020

HERMANSEN DR. (FORMERLY TRI RD.)

01

51.2 AC.

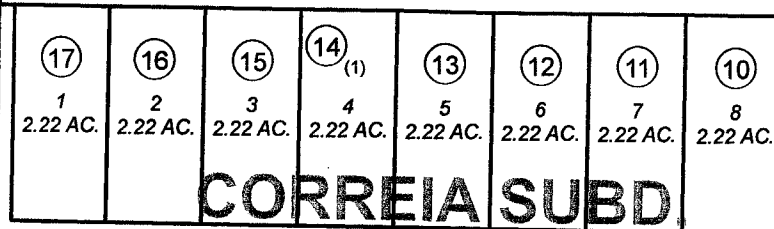


09

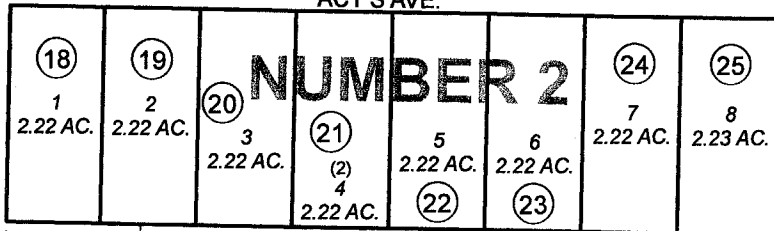
80 AC.

540

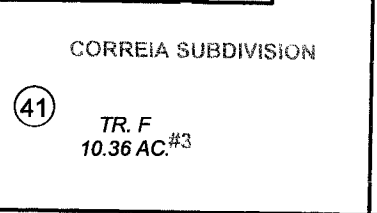
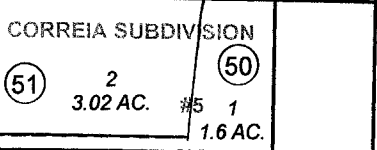
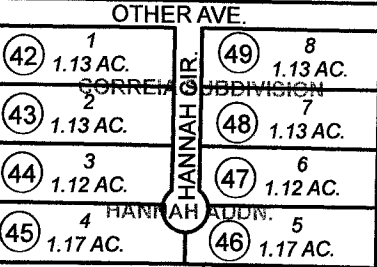
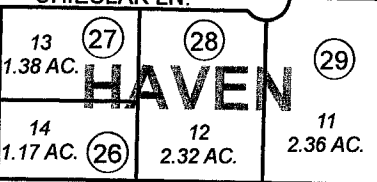
270



CORREIA ST.



ALEXANDER AVE.



07

40 AC.

08

40 AC.

520

JUNE 25, 2008

For 2009 assessment roll		
Delete	Add	Revise
To		
6	50,51	



Assessor's Map
Kenai Peninsula Borough

CORREIA SUB #1 KN0800016
CORREIA SUB NO 2 KN0850136
SPRUCE HAVEN SUB KN0850215
CORREIA SUB #3 KN0990083
CORREIA SUB HANNA ADDN KN2008005
CORREIA SUB #5 KN2008042

This map is prepared for Kenai Peninsula Borough Assessing Dept. use only and is not intended for conveyance nor is it a survey.

Note- Assessor's block Numbers Shown in Ellipses
Assessor's Parcel Numbers Shown in Circles