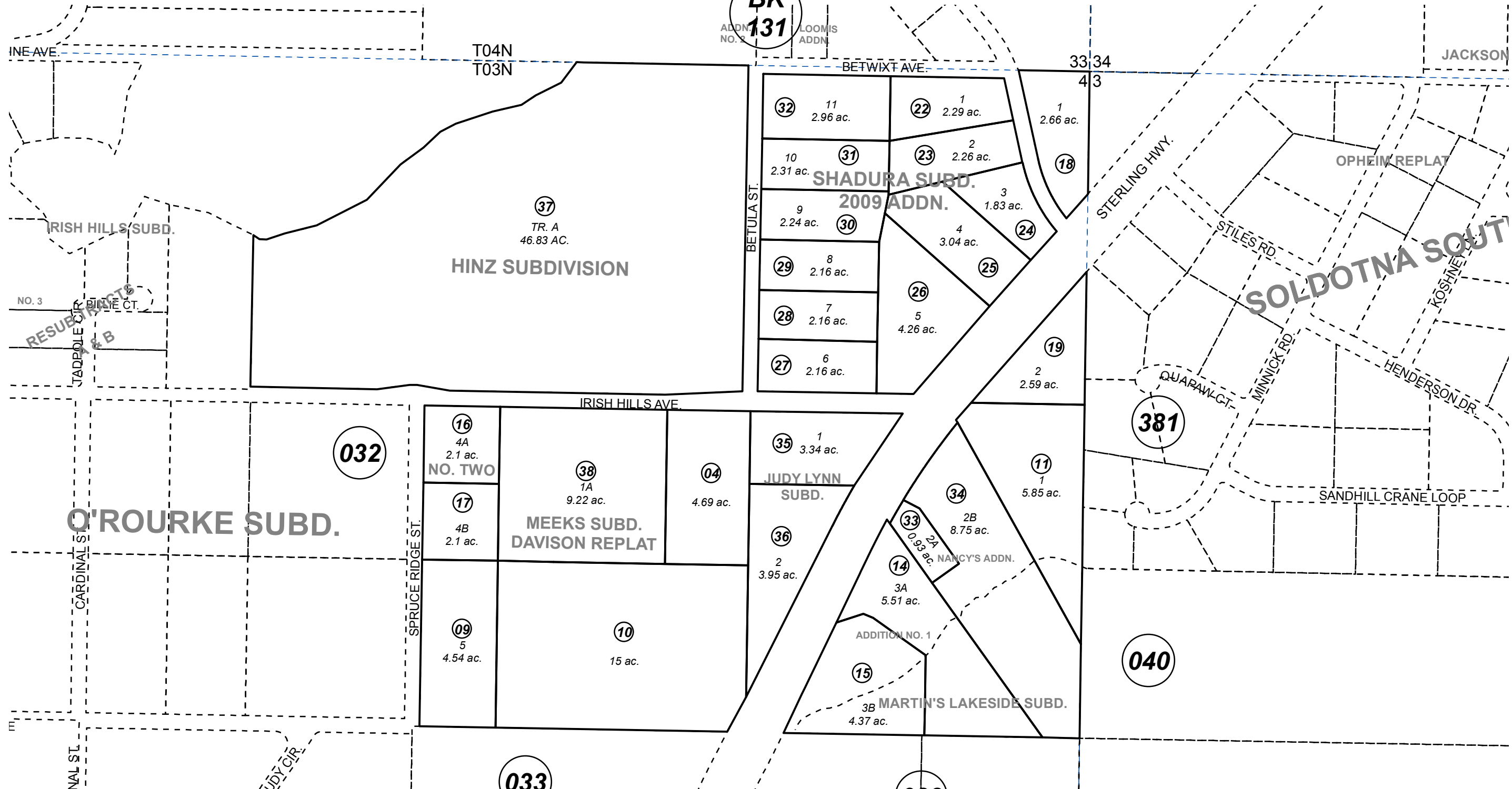


NE 1/4 SEC. 4, T03N, R11W, S.M.

133-034

**BK**  
**131**

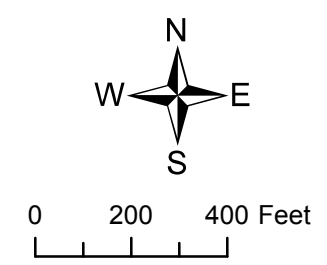


JUNE 29, 2016

For 2017 assessment roll		
Delete	Add	Revise
	To	
5-7	38	

MEEKS SUB KN0830117  
 MARTIN'S LAKESIDE SUB KN0980064  
 MARTIN'S LAKESIDE SUB ADDN NO 1 KN2002120  
 MEEKS SUB NO. TWO KN2008092  
 SHADURA SUB 2009 ADDN KN2009031  
 SHADURA SUB 2010 ADDN KN2011003  
 MARTINS LAKESIDE SUB NANCYS ADDN KN2011087  
 JUDY LYNN SUB KN2013048  
 HINZ SUB KN2016024  
 MEEKS SUB DAVISON REPLAT KN2016028

Assessor's Map  
Kenai Peninsula Borough



This map is prepared for Kenai Peninsula Borough Assessing Dept. use only and is not intended for conveyance nor is it a survey.  
 Note- Assessor's block Numbers Shown in Ellipses  
 Assessor's Parcel Numbers Shown in Circles