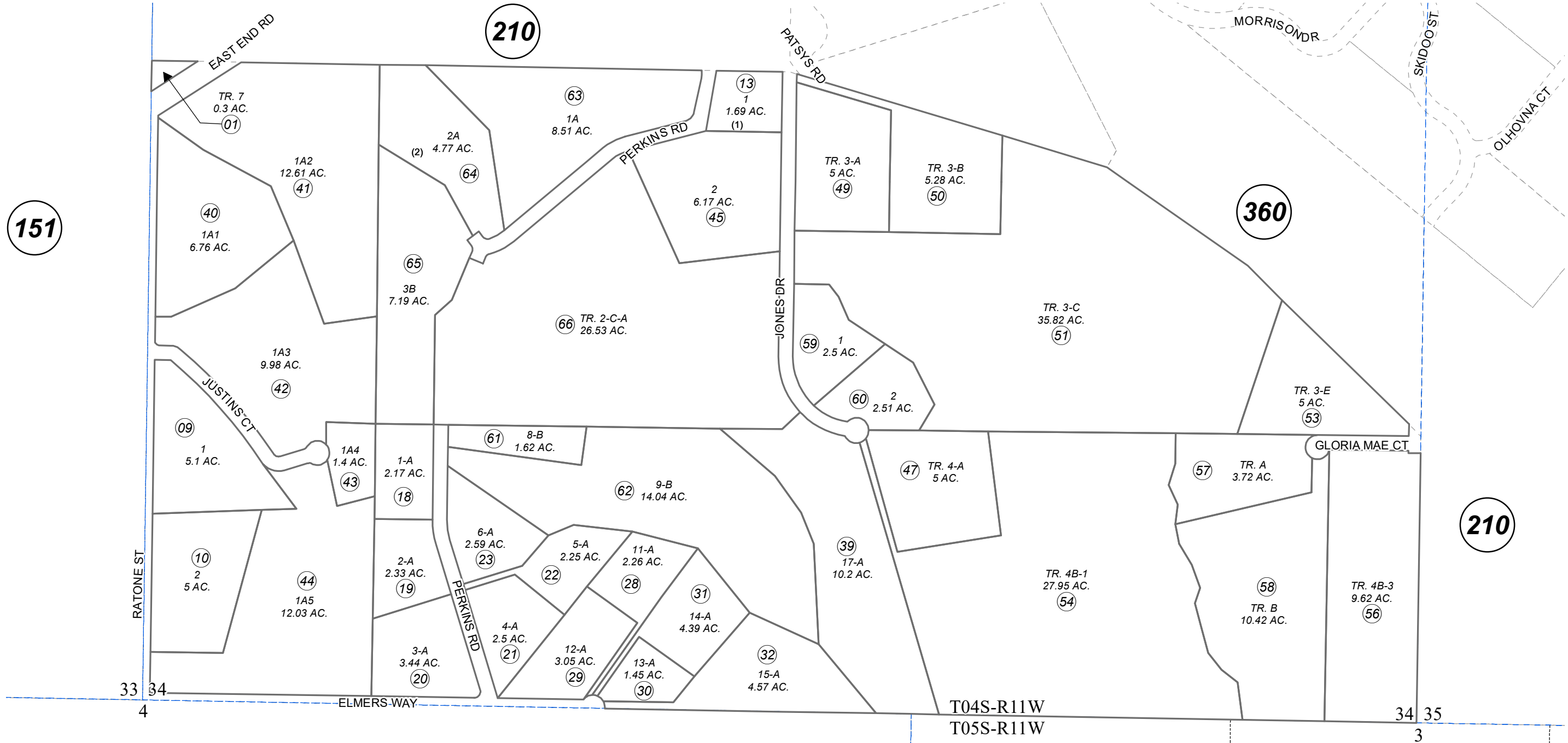


POR. S1/2 SEC. 34, T04S, R11W, S.M.

185-430



151

210

360

210

BK 172

OCTOBER 31, 2023

For 2024 assessment roll		
Delete	Add	Revise
		To
14, 15, 37, 46	63-66	

- STANLEY'S MEADOW NO 3 HM0810084
- STANLEY'S MEADOW NO 4 HM0820052
- STANLEY'S MEADOW NO 6 HM0860007
- STANLEY'S MEADOW NO 7 HM0870045
- STANLEYS MEADOW SUB NO 7 HM0870045
- STANLEYS MEADOW SUB NO 13 HM0930034
- STANLEYS MEADOW SUB NO 11 HM0930060
- STANLEY'S MEADOW SUB NO 15 HM0960041
- STANLEY'S MEADOW VIKKI'S REPLAT HM0990030
- STANLEYS MEADOW 2000 ADDN HM2000015
- STANLEYS MEADOW NO 18 HM2000075
- STANLEYS MEADOW 2003 ADDN HM2003078
- STANLEYS MEADOW WALLER ADDITION PHASE ONE HM2012035
- STANLEYS MEADOW JONES ADDN HM2020044
- STANLEY'S MEADOW 2021 HM2021048
- STANLEY'S MEADOW 2023 HM2023036

Assessor's Map
Kenai Peninsula Borough



0 200 400 Feet

This map is prepared for Kenai Peninsula Borough Assessing Dept. use only and is not intended for conveyance nor is it a survey.

Note- Assessor's block Numbers Shown in Ellipses
Assessor's Parcel Numbers Shown in Circles