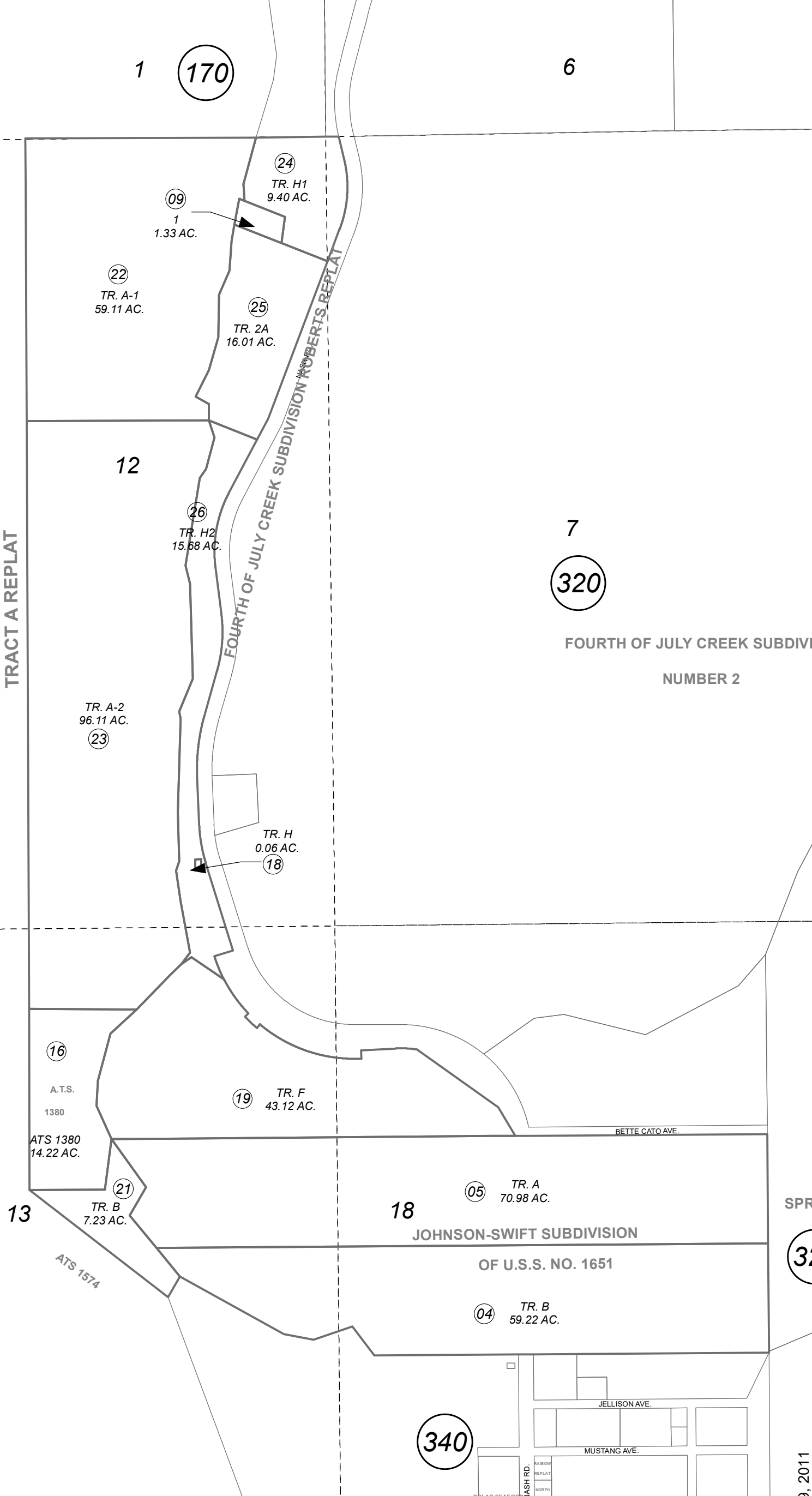


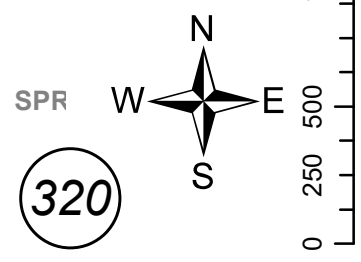
POR. SEC. 12 & 13, T01S, R01W & SEC. 7 & 18, T01S, R01E, S.M. 145-330

ALASKA TIDELANDS SURVEY 1574

TRACT A REPLAT



7
 (320)
 FOURTH OF JULY CREEK SUBDIVI
 NUMBER 2



JUNE 9, 2011	To	04.05
For 2012 assessment roll		(ACREAGE CHANGE)
Delete	Add	Revise

This map is prepared for Kenai Peninsula Borough Assessing Dept. use only and is not intended for conveyance nor is it a survey.

Note- Assessor's block Numbers Shown in Ellipses
 Assessor's Parcel Numbers Shown in Circles

US SURVEY 3294 SW0003294
 JOHNSON-SWIFT SUB OF US SURVEY 1651 SW0730096
 ALASKA TIDELANDS SURVEY 1380 SW0890024
 FOURTH OF JULY CREEK SUB NO 2 SW0980004
 ALASKA TIDELANDS SURVEY 1574 SW0990007
 SEWARD TIDELANDS SURVEY SW200003
 FOURTH OF JULY CREEK SUB ROBERTS REPLAT SW2006012

Assessor's Map
 Kenai Peninsula Borough

(340)