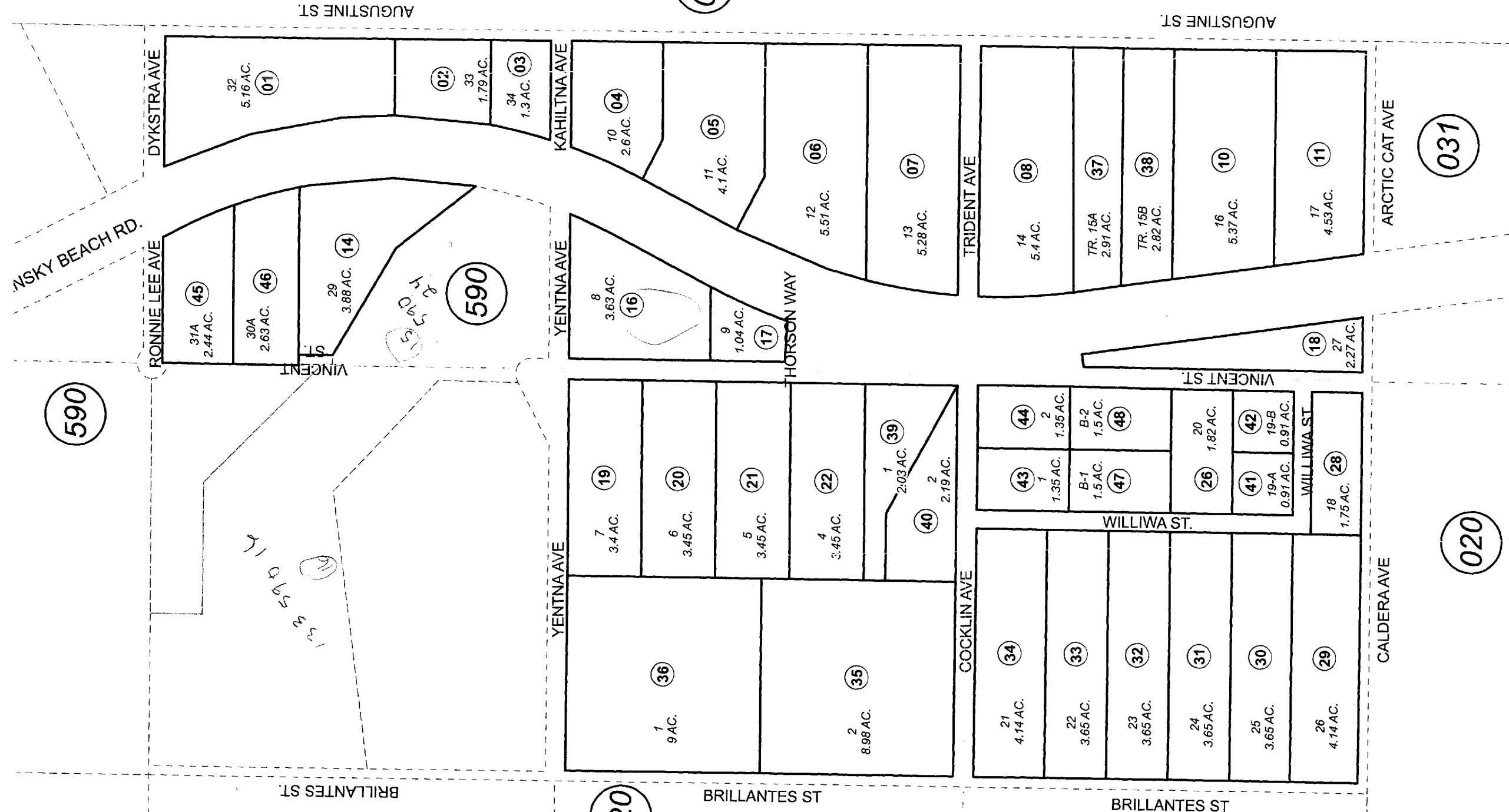


133-350

SE1/4 SEC. 1, NE1/4 SEC. 12 T03N, R12W & LOTS 6 & 7 SEC. 6 & LOT 1 SEC. 7, T03N, R11W, S.M.



This map is prepared for Kenai Peninsula Borough Assessing Dept. use only and is not intended for conveyance nor is it a survey.

Note- Assessor's block Numbers Shown in Ellipses
Assessor's Parcel Numbers Shown in Circles

GLEN EYRIE SUB HM0770051
JANS SOUTHLAND ESTATES
DEED OF RECORD BOUNDARY SURVEY HM0850052
GLEN EYRIE HESELTON ADDN HM2010026

Assessor's Map
Kenai Peninsula Borough



Delete		Add		Revise	
15		133590+		To	
For 2011 assessment roll					
JANUARY 11, 2011					