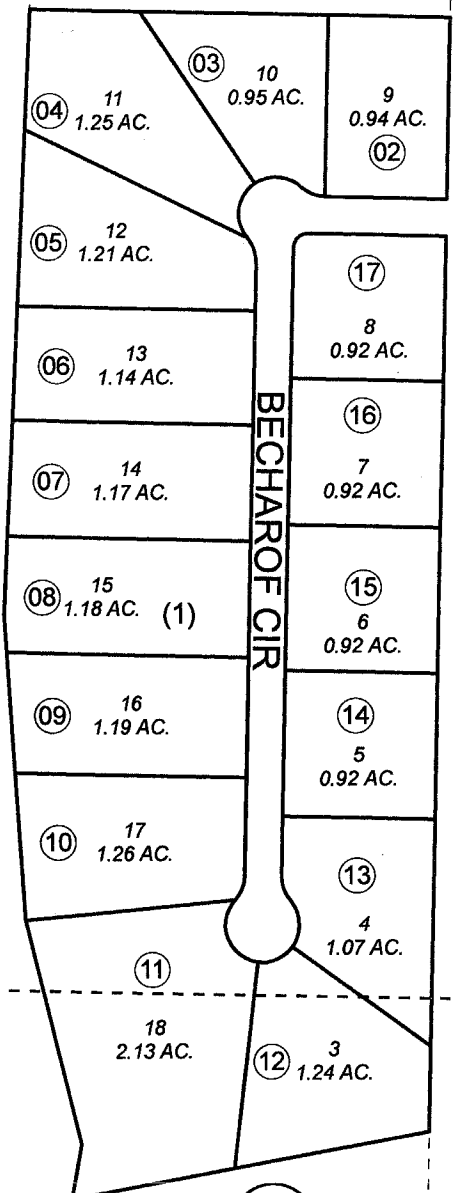


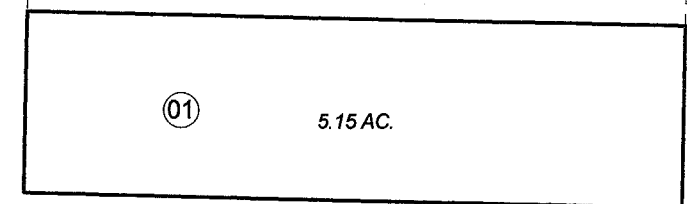
POR. SEC. 4, T02N, R12W, S.M.

137-350

COOK INLET

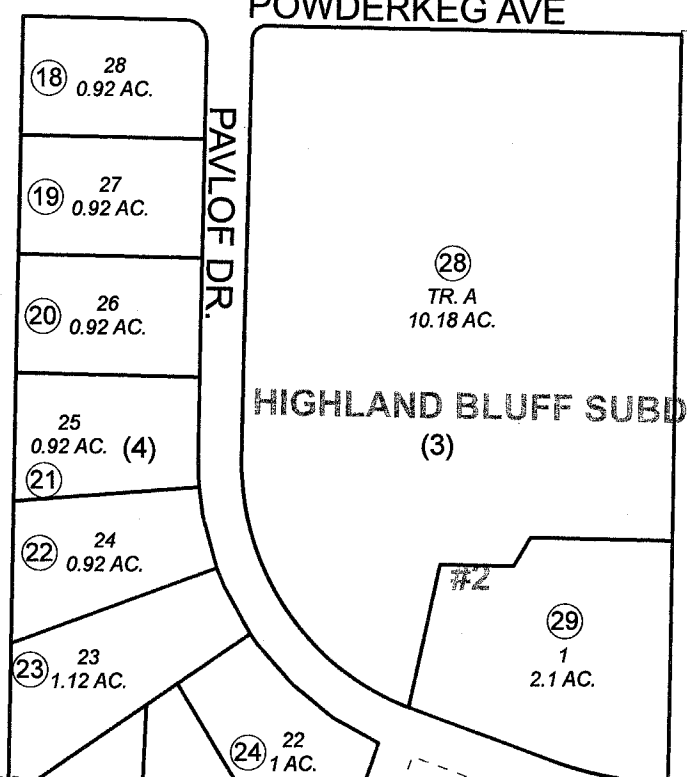


BK 133



MARK TRAIL AVE.

ETHEL PL.



POWDERKEG AVE

PAVLOF DR.

HIGHLAND BLUFF SUBD. (3)

BK 133

COHOE LOOP RD

(1) 340 HIGHLAND BLUFF

JUNE 24, 2008

For 2009 assessment roll		
Delete	Add	Revise
To		
27	28,29	



Assessor's Map  
Kenai Peninsula Borough

HIGHLAND BLUFF SUB KN0800038  
HIGHLAND BLUFF SUB #2 KN2008039

This map is prepared for Kenai Peninsula Borough Assessing Dept. use only and is not intended for conveyance nor is it a survey.  
Note- Assessor's block Numbers Shown in Ellipses  
Assessor's Parcel Numbers Shown in Circles