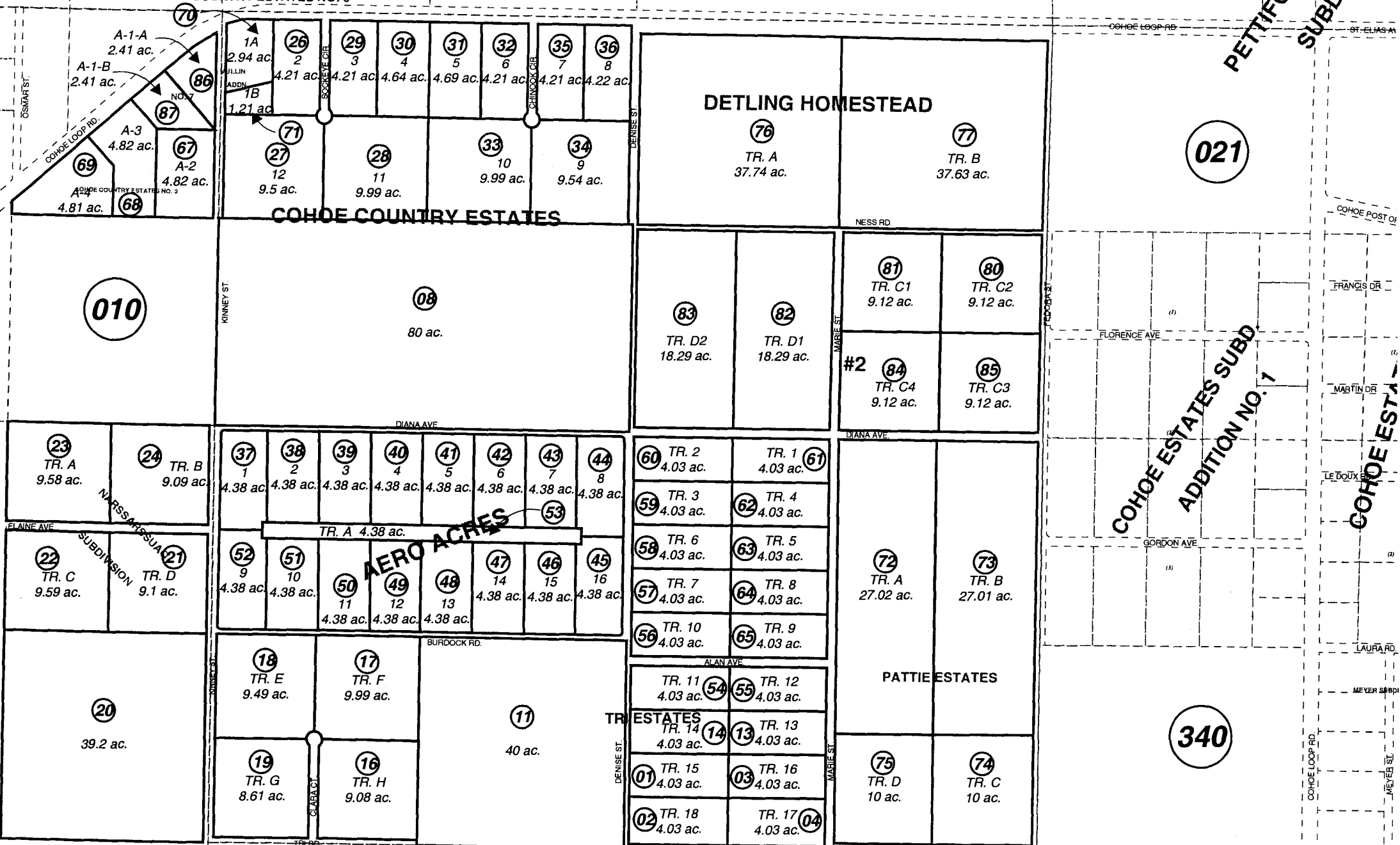


POR. SEC. 9 & 10, T03N, R12W, S.M.

020

133-530

COHOE COUNTRY ESTATES NO. 6



010

010

050

070

021

340



JANUARY 5, 2005

For 2005 assessment roll		
Delete	Add	Revise
To		
66	86,87	

Assessor's Map
Kenai Peninsula Borough

- TRI ESTATES SUB KN0780012
- TRI ESTATES SUB LINDNER 1979 ADDN KN0800020
- TRI ESTATES SUB EDDY TRI 1980 ADDN KN0800022
- NARSSARSSUAQ SUB KN0820120
- COHOE COUNTRY ESTATES SUB KN0830047
- AERO ACRES SUB KN0860041
- TRI ESTATES 1986 ADDN KN0860064
- TRI ESTATES SUB 1986 ADDN KN0860064
- COHOE COUNTRY ESTATES SUB NO 3 KN0910067
- COHOE COUNTRY ESTATES SUB MULLIN ADDN KN0980022
- PATTIE ESTATES KN2000021
- DETLING HOMESTEAD KN2002030
- DETLING HOMESTEAD 2 KN2003096
- COHOE COUNTRY ESTATES SUB NO 7 KN2004126

Note- Assessor's block Numbers Shown in Elipses
Assessor's Parcel Numbers Shown in Circles

This map is prepared for Kenai Peninsula Borough Assessing Dept. use only and is not intended for conveyance nor is it a survey.