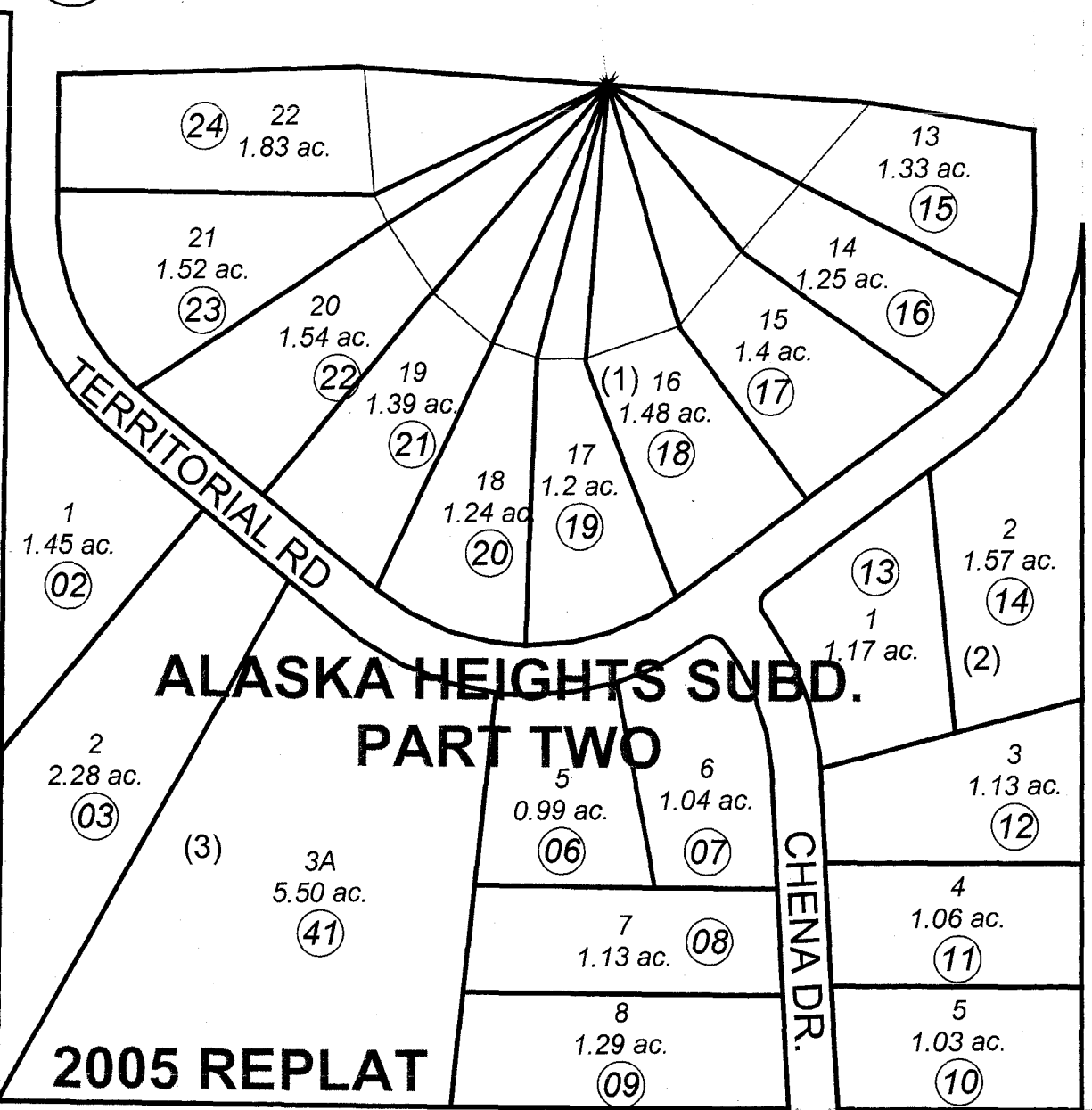
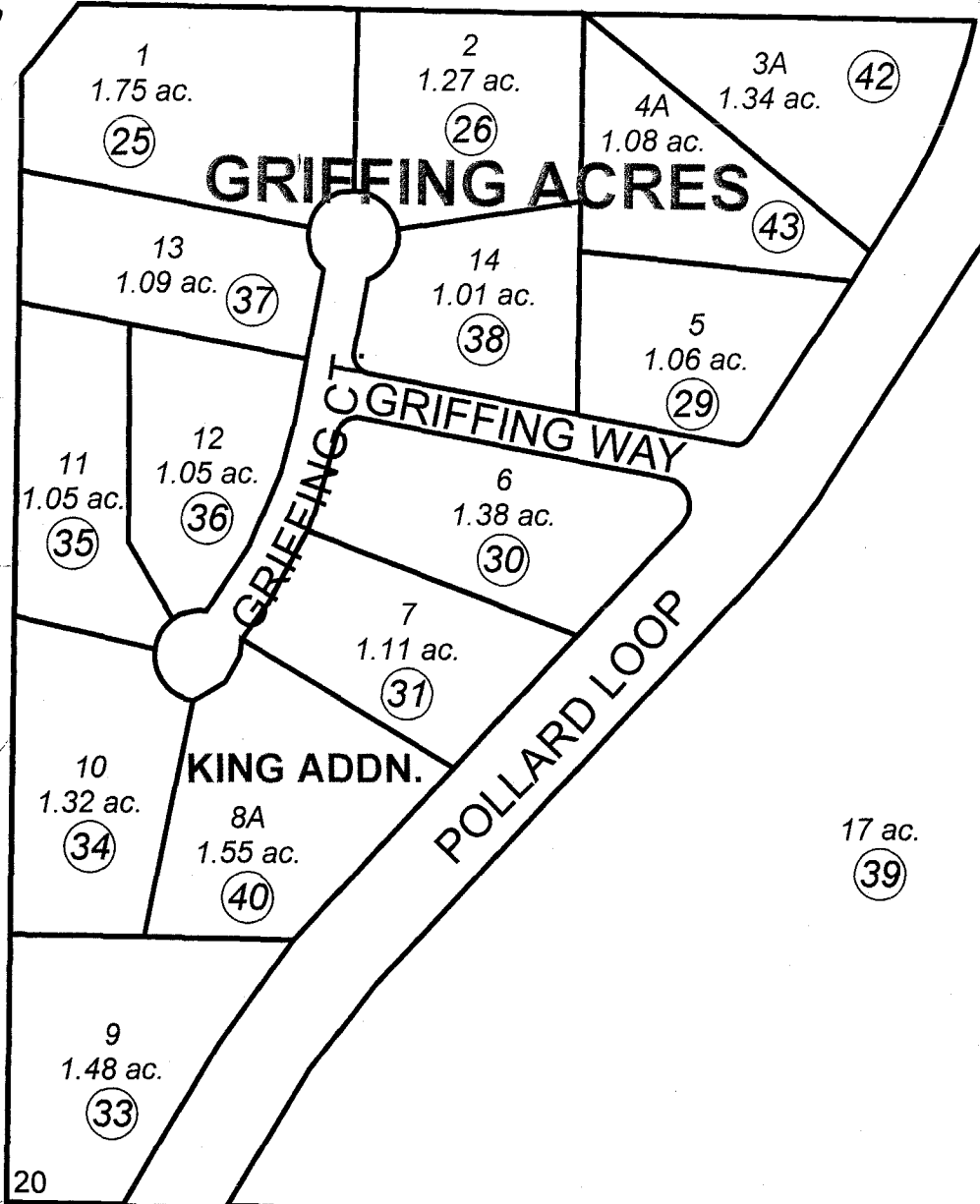


STERLING HWY.

420



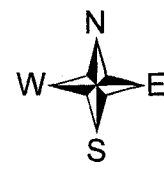
280

SUBD.

083

2005 REPLAT

120



SEPTEMBER 21, 2006

For 2007 assessment roll		
Delete	Add	Revise
To		
27,28	42,43	

Assessor's Map
Kenai Peninsula Borough

ALASKA HEIGHTS SUB PART 2 KN0780085
 GRIFFING ACRES SUB KN0830112
 GRIFFING ACRES SUB KING ADDN KN2003049
 ALASKA HEIGHTS SUB 2005 REPLAT KN2005048
 GRIFFING ACRES SUB BUERGE REPLAT KN2006036

This map is prepared for Kenai Peninsula Borough Assessing Dept. use only and is not intended for conveyance nor is it a survey.

Note- Assessor's block Numbers Shown in Ellipses
 Assessor's Parcel Numbers Shown in Circles