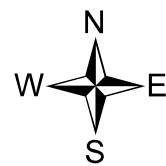
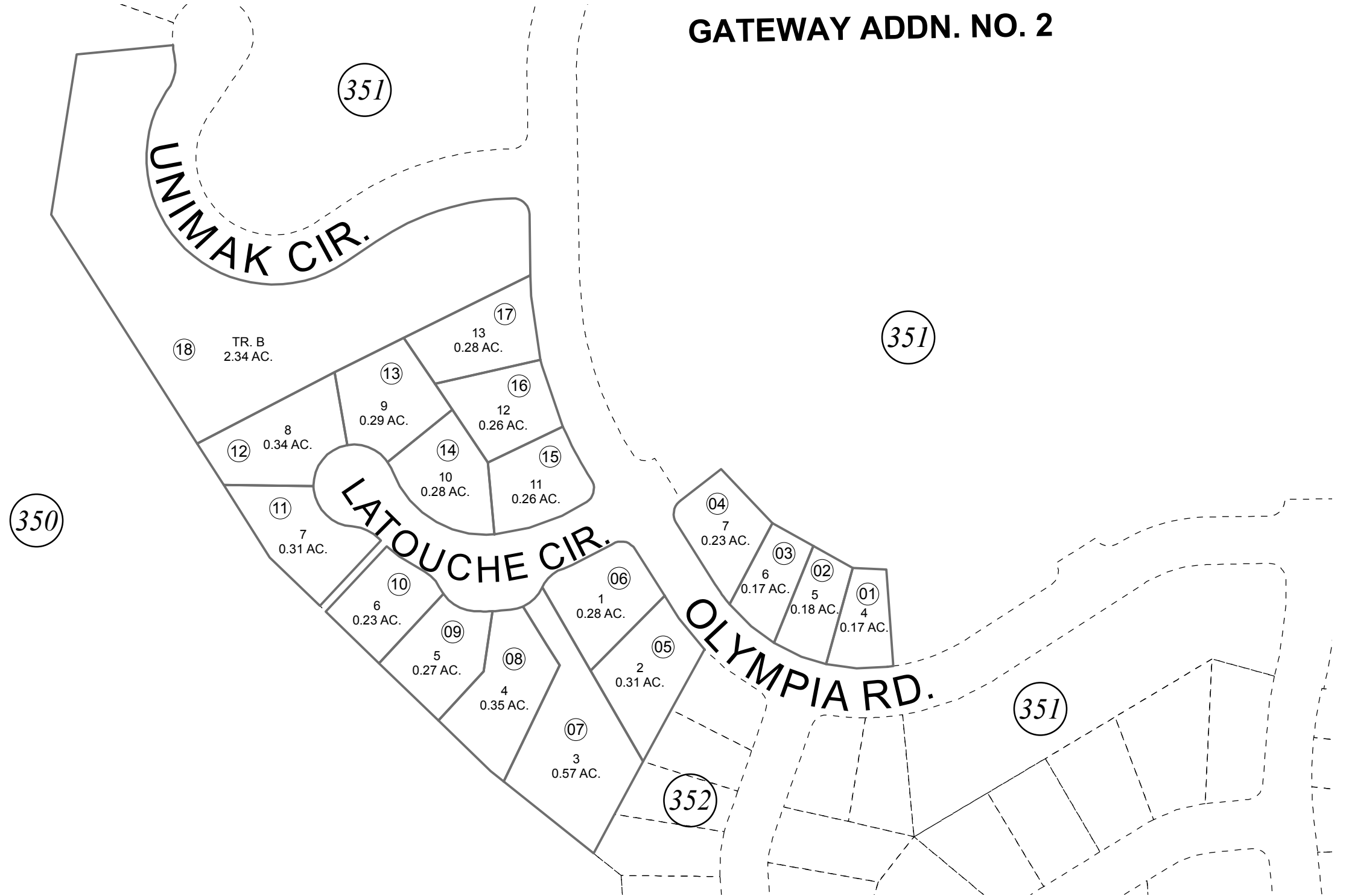


GATEWAY ADDN. NO. 2



0 25 50 100 Feet

AUGUST 19, 2016

For 2017 assessment roll		
Delete	Add	Revise
To		15,16
(ACREAGE REVISION)		

Assessor's Map
Kenai Peninsula Borough

GATEWAY SUB AMENDED SW0840018

Note- Assessor's block Numbers Shown in Ellipses
Assessor's Parcel Numbers Shown in Circles

This map is prepared for Kenai Peninsula Borough Assessing Dept. use only and is not intended for conveyance nor is it a survey.