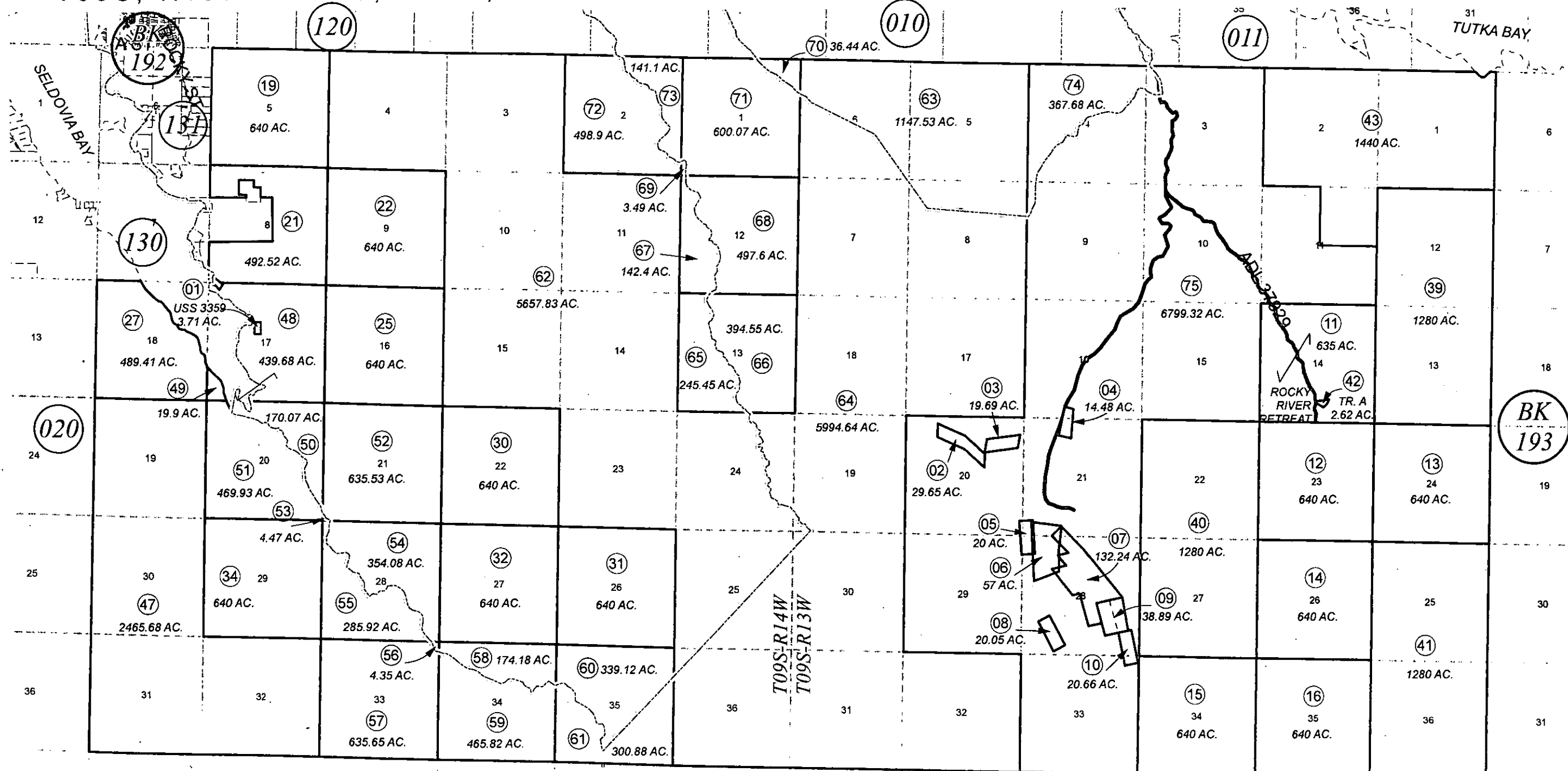


T09S, R13W & T09S, R14W, S.M.

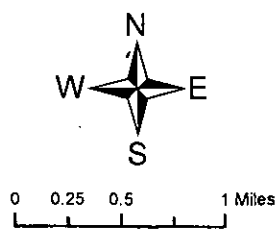
191-030



Seldovia Recreation Service Area

APRIL 23, 2012

For 2012 assessment roll		
Delete	Add	Revise
	To	
17, 18, 23, 24, 26, 28, 29, 33, 35-38, 46	48-75	



Assessor's Map
Kenai Peninsula Borough

U.S.S. 3359 SL0003359
ROCKY RIVER RETREAT SL0930003

This map is prepared for Kenai Peninsula Borough Assessing Dept. use only and is not intended for conveyance nor is it a survey.

Note- Assessor's block Numbers Shown in Elipses
Assessor's Parcel Numbers Shown in Circles