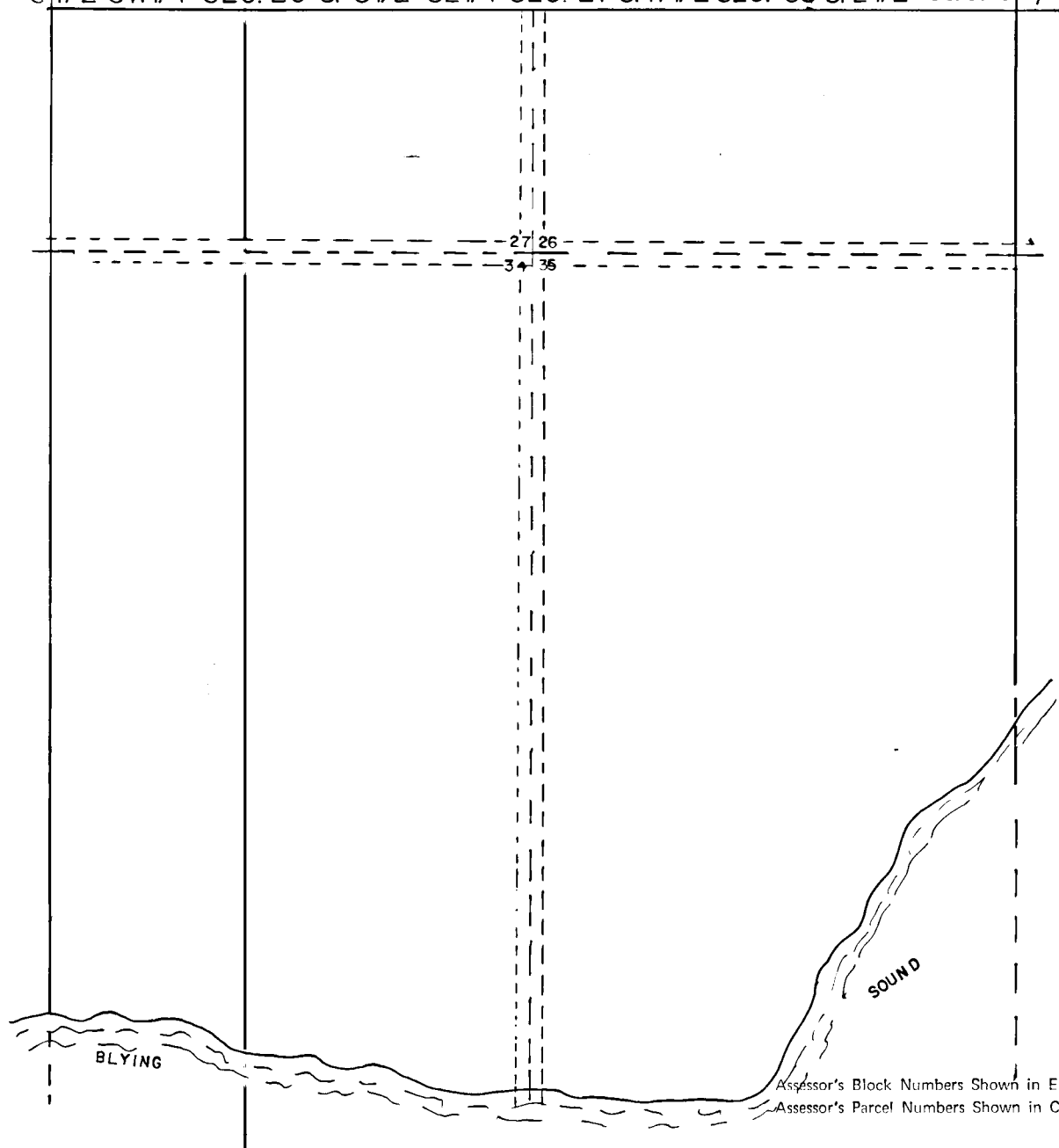


S 1/2 SW 1/4 SEC. 26 & S 1/2 SE 1/4 SEC. 27 & W 1/2 SEC. 35 & E 1/2 SEC. 34, T. 2 S., R. 2 E., S M

189-318



319

316

Assessor's Map  
Kenai Peninsula Borough, Alaska

Assessor's Block Numbers Shown in Ellipses  
Assessor's Parcel Numbers Shown in Circles