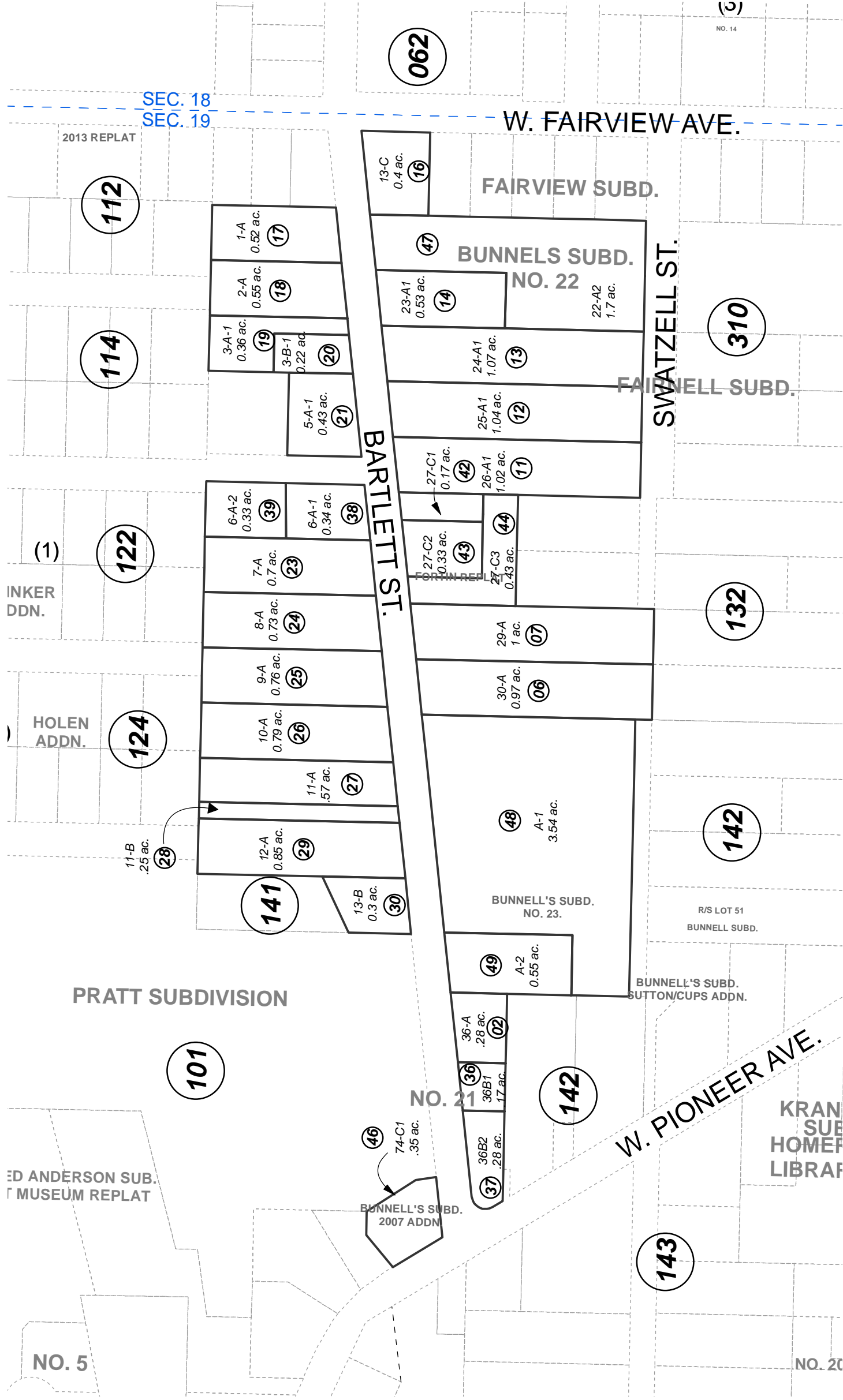


POR. SEC. 19, T06S, R13W, S.M.

175-133



JULY 10, 2013

For 2014 assessment roll	
Delete	Revise
40	48,49



0 50 100 200 Feet

- BUNNELL'S SUB NO 17 HM0860044
- BUNNELL'S SUB ADDN NO 18 HM0900041
- BUNNELLS SUB MASTOLIER ADDN HM0970075
- BUNNELL'S SUB NO 19 HM2001005
- BUNNELL'S SUB FORTIN REPLAT HM2006065
- BUNNELL'S SUB 2007 ADDN HM2007074
- BUNNELL'S SUB NO 22 HM2009018
- BUNNELL'S SUB NO 23 HM2013010

This map is prepared for Kenai Peninsula Borough Assessing Dept. use only and is not intended for conveyance nor is it a survey.

Note- Assessor's block Numbers Shown in Ellipses Assessor's Parcel Numbers Shown in Circles

Assessor's Map Kenai Peninsula Borough