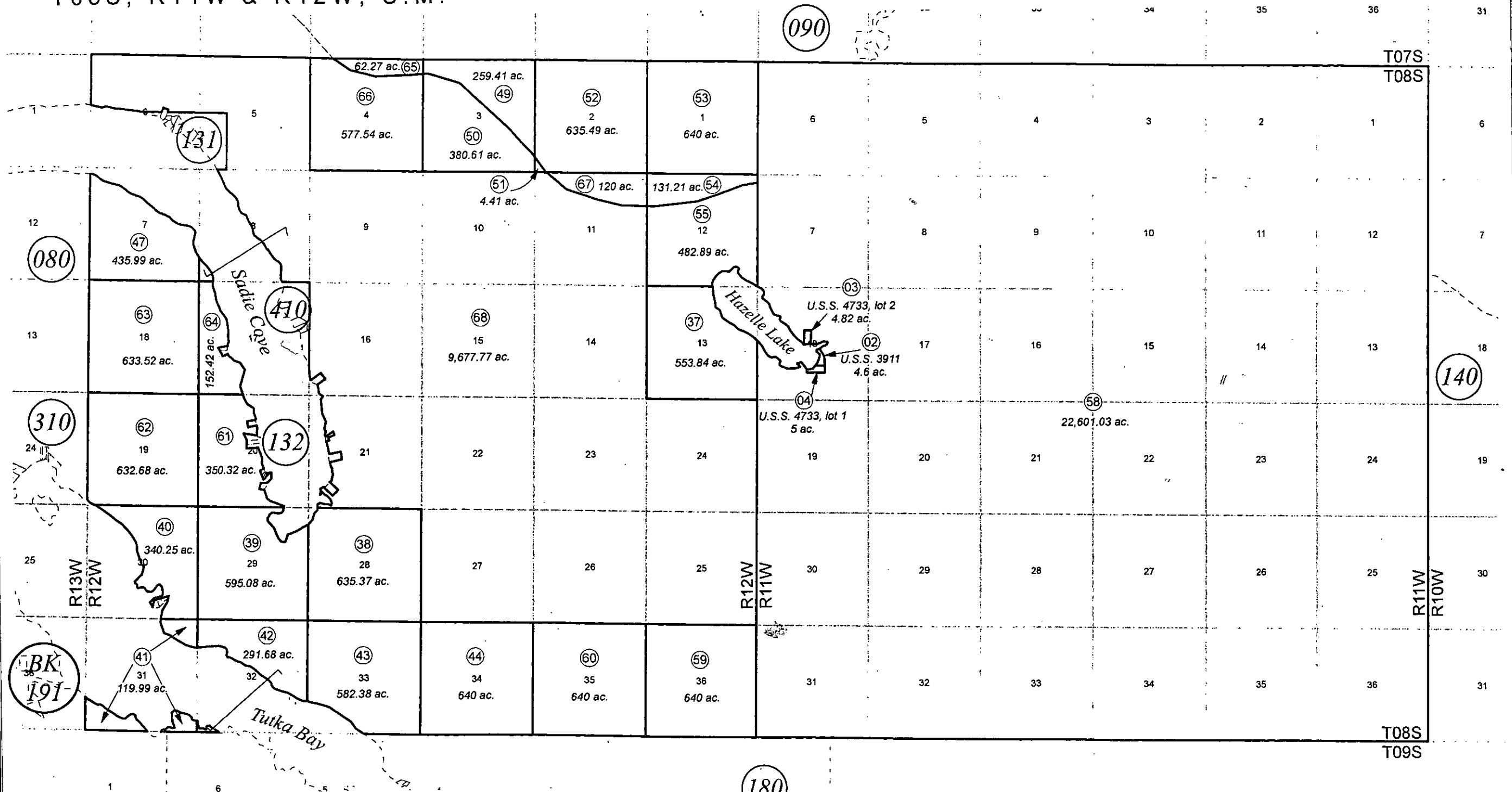


T08S, R11W & R12W, S.M.

193-130



NOVEMBER 7, 2011

For 2012 assessment roll		
Delete	Add	Revise
To		64,68
(ACREAGE CHANGE)		



0 1,500 3,000 6,000 Feet

Assessor's Map
Kenai Peninsula Borough

US SURVEY 3911 SL0003911
US SURVEY 4733 SL0004733

This map is prepared for Kenai Peninsula Borough Assessing Dept. use only and is not intended for conveyance nor is it a survey.
Note- Assessor's block Numbers Shown in Elipses
Assessor's Parcel Numbers Shown in Circles