

PORTION OF E1/2 SEC. 27, T4S, R11W, SEWARD MERIDIAN

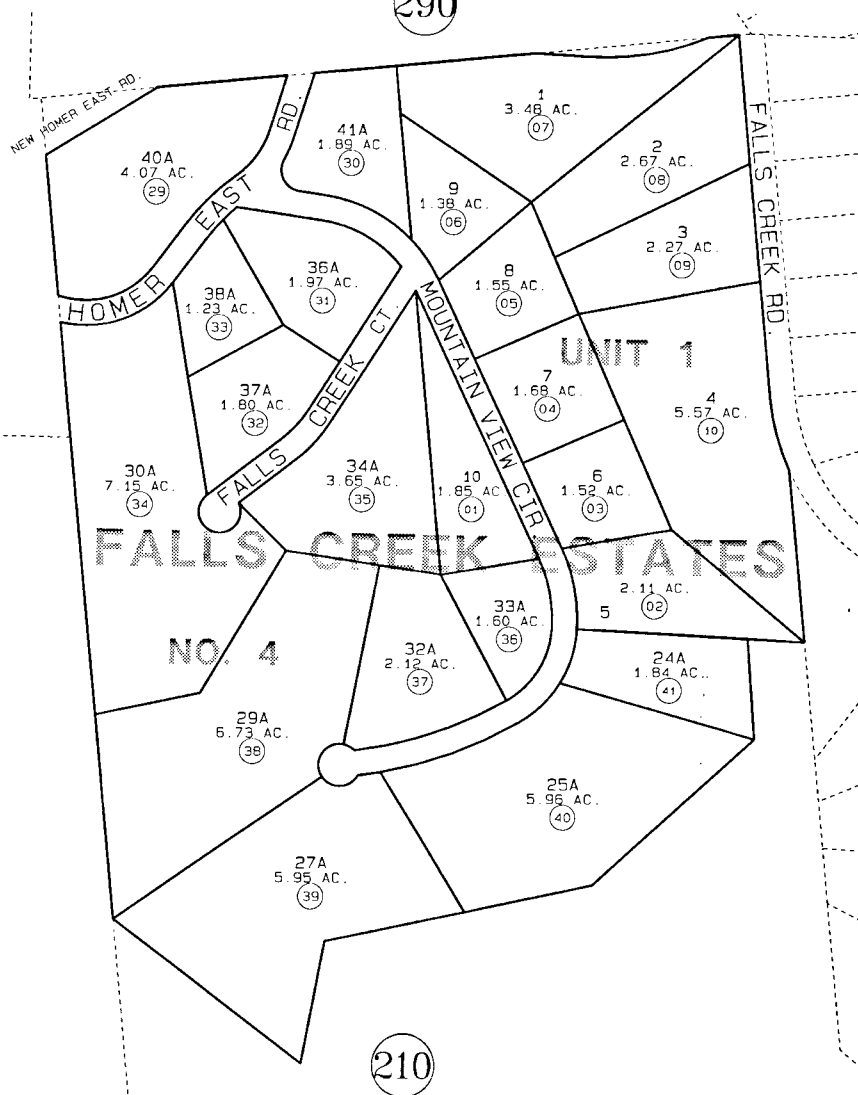
185-350

210

290

210

210



DATE: NOV. 26, 1996

FOR 19 97 ASSESSMENT ROLL		
DELETE	ADD	REVISED
TO		
11-28	29-41	

Assessor's Map
Kenai Peninsula Borough

FALLS CREEK ESTATES UNIT 1 HM800012
 FALLS CREEK ESTATES NO. 3 HM920016
 FALLS CREEK ESTATES NO. 3 AMENDED HM920049
 FALLS CREEK ESTATES NO. 4 HM960053

THIS MAP IS PREPARED
 FOR KENAI PENINSULA
 BOROUGH ASSESSING DEPT.
 USE ONLY AND IS NOT
 INTENDED FOR ANY
 OTHER USE OR REPRESENTATION

NOTE - Assessor's Block Numbers Shown in Ellipses
 Assessor's Parcel Numbers Shown in Circles