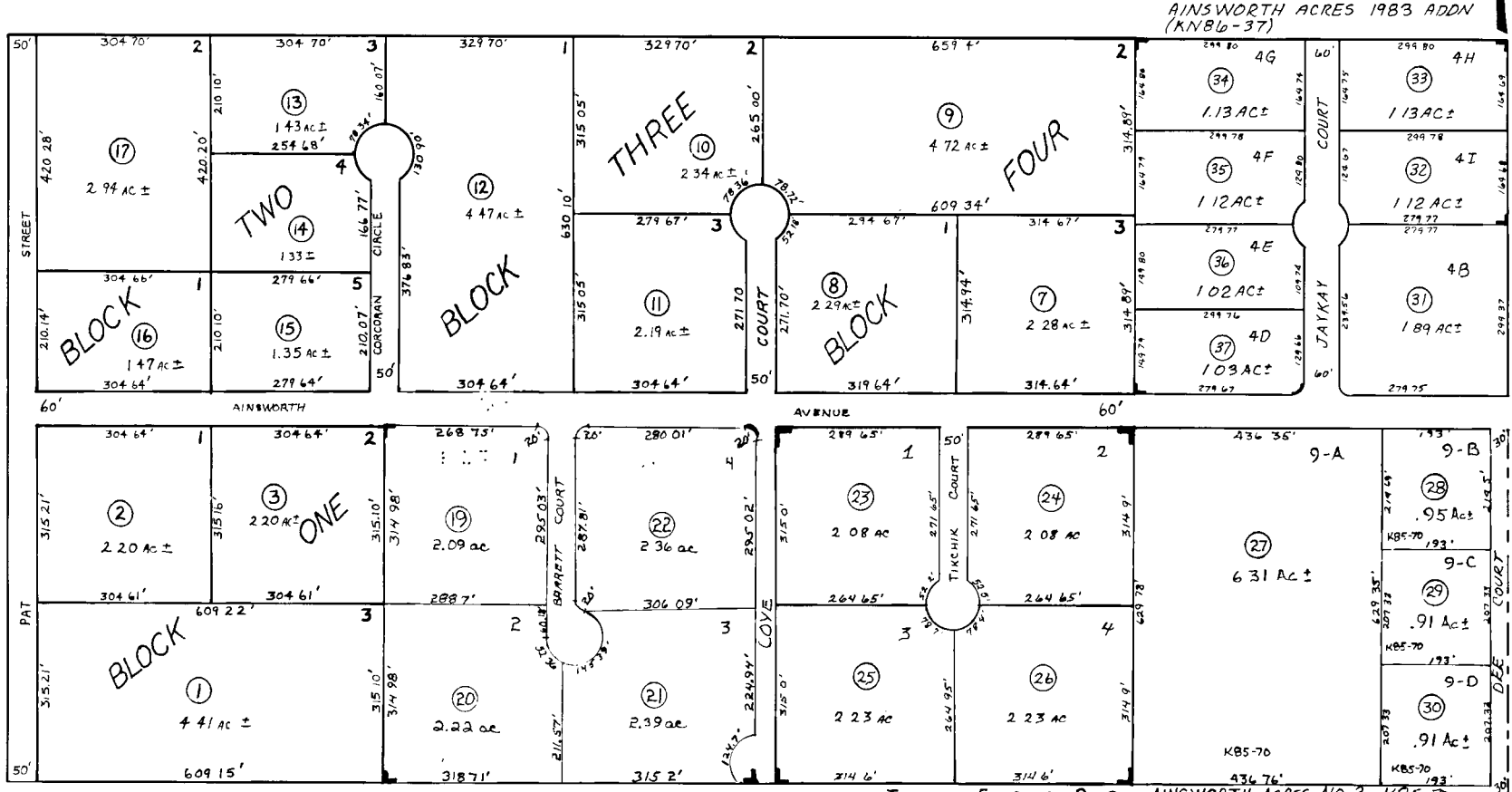


POR. OF SEC. 11, T7N, R12W, S.M.

14



21

14

LINRICH SUB. K-78-65 4-26-78

ARBOR ESTATES SUB. K75-105 10-6-75

Kenai Peninsula Borough, Alaska

NOTE - Assessor's Block Numbers Shown in Ellipses Assessor's Parcel Numbers Shown in Circles