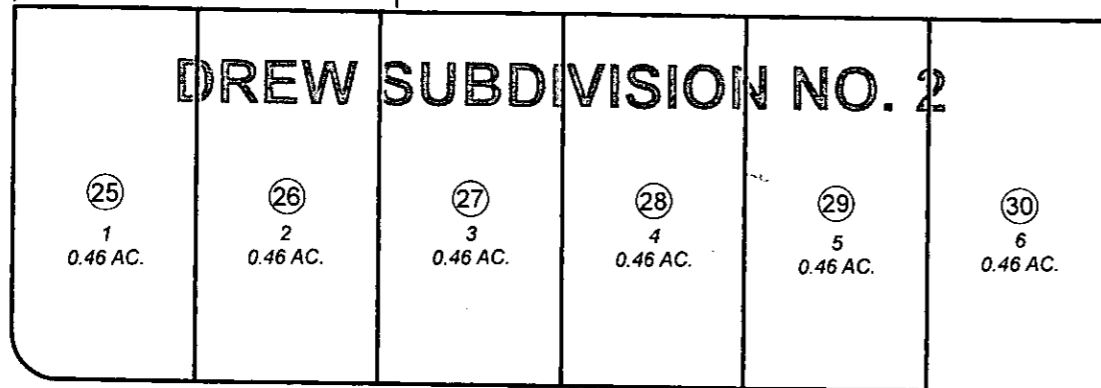


POR. SEC. 10, T07N, R12W, S.M.

012-250

FROST ST

LIGHTHOUSE ST

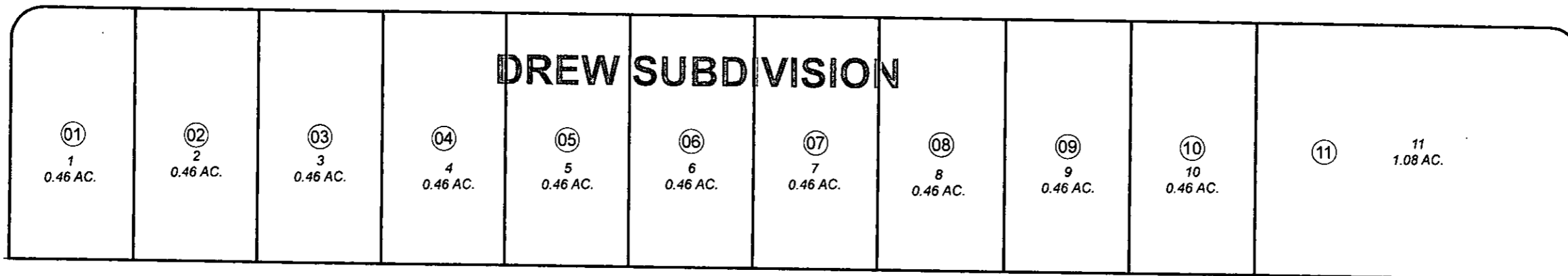


210

370

230

ROZELLA DR



210

JANUARY 5, 2012

For 2012 assessment roll		
Delete	Add	Revise
To		
12, 31-35	(TO 012-210)	



0 25 50 100 Feet

Assessor's Map
Kenai Peninsula Borough

DREW SUB KN0001565
DREW SUB NO 2 KN0001590

This map is prepared for Kenai Peninsula Borough Assessing Dept. use only and is not intended for conveyance nor is it a survey.

Note- Assessor's block Numbers Shown in Elipses
Assessor's Parcel Numbers Shown in Circles