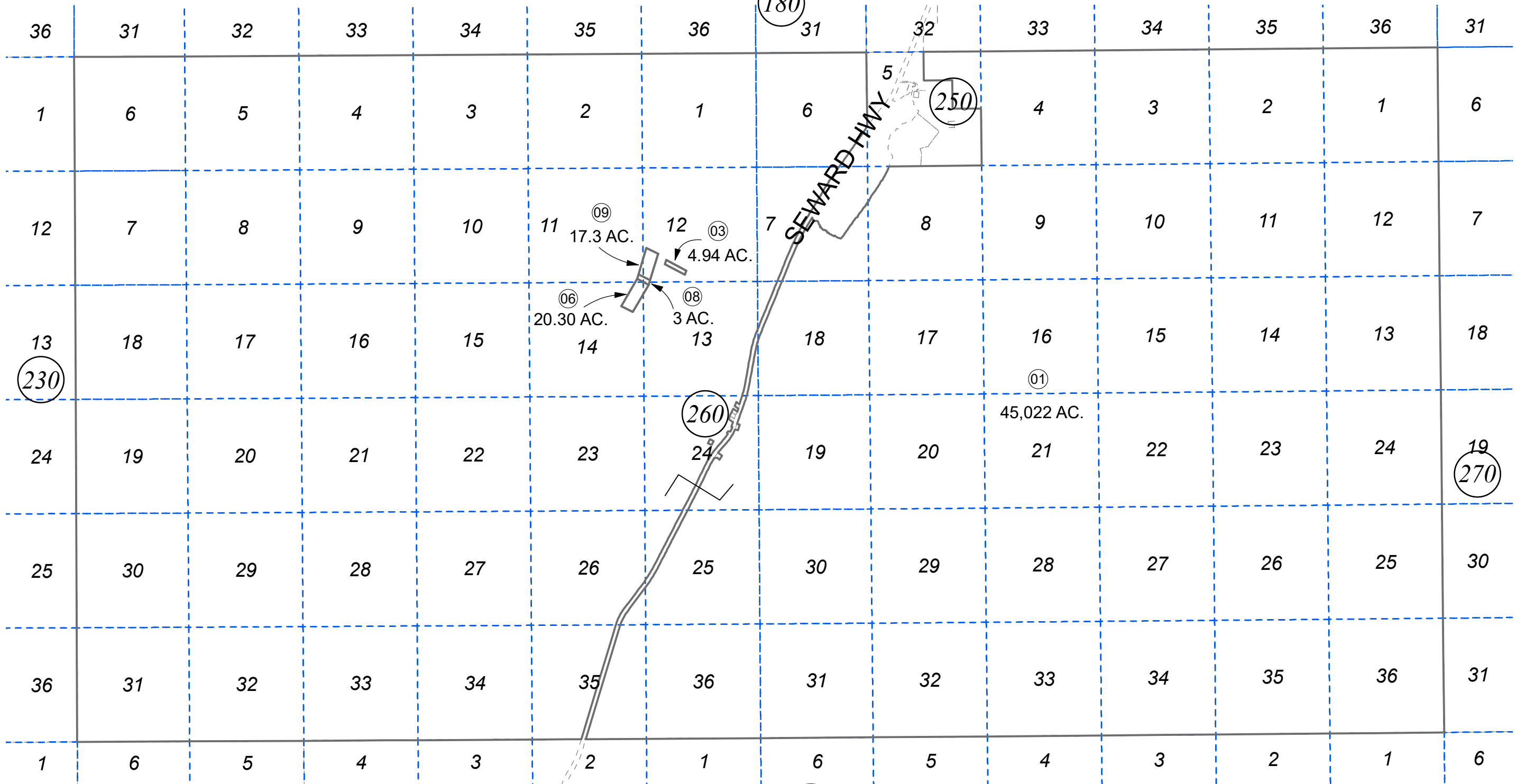


T06N, R01W, R02W, S.M.

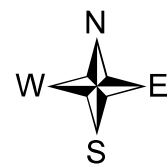
035-240



AUGUST 24, 2023

For 2024 assessment roll		
Delete	Add	Revise
To		
01		
(REMOVED LEASEHOLD REFERENCE)		

Assessor's Map
Kenai Peninsula Borough



0 2,000 4,000 Feet

This map is prepared for Kenai Peninsula Borough Assessing Dept. use only and is not intended for conveyance nor is it a survey.

Note- Assessor's block Numbers Shown in Elipses
Assessor's Parcel Numbers Shown in Circles