

POR. SEC. 5, T06N, R01W, S.M.

035-250

180

240

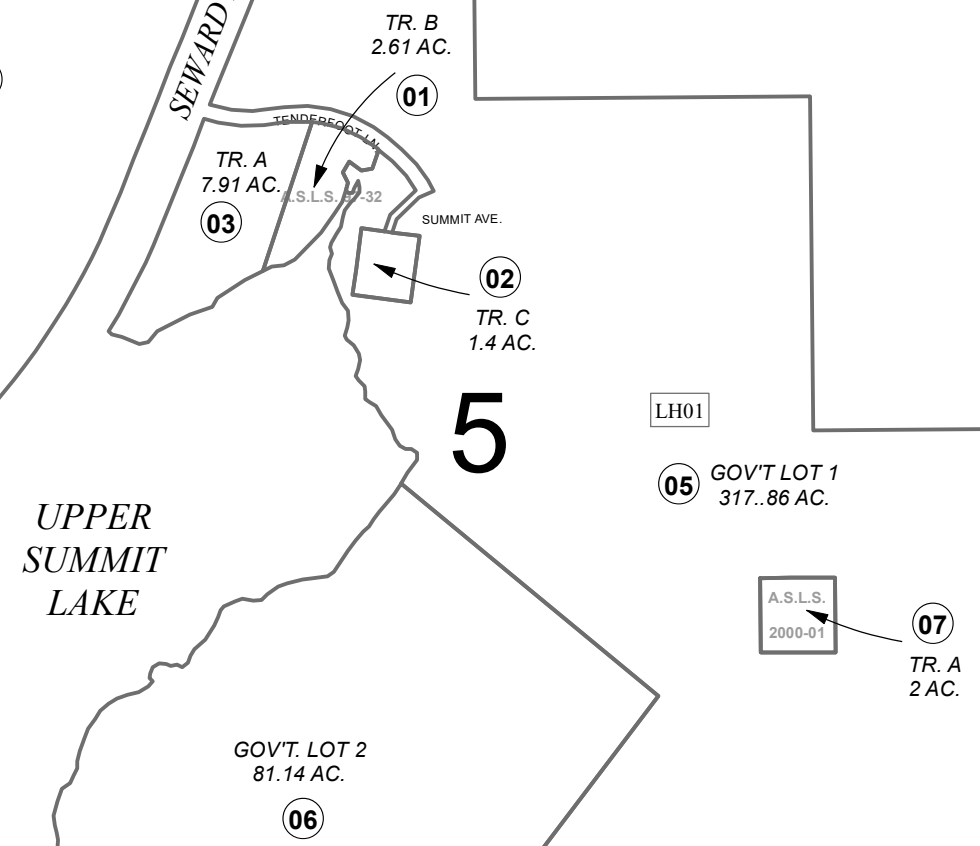
240

6

5

4

240



FEBRUARY 4, 2022

For 2022 assessment roll		
Delete	Add	Revise
	To	05
		(ADDED LEASEHOLD)



0 200 400 800 Feet

Assessor's Map
Kenai Peninsula Borough

ALASKA STATE LAND SURVEY 97-32 SW0980003
ALASKA STATE LAND SURVEY 2000-01 SW2001010

This map is prepared for Kenai Peninsula Borough Assessing Dept. use only and is not intended for conveyance nor is it a survey.

Note- Assessor's block Numbers Shown in Elipses
Assessor's Parcel Numbers Shown in Circles