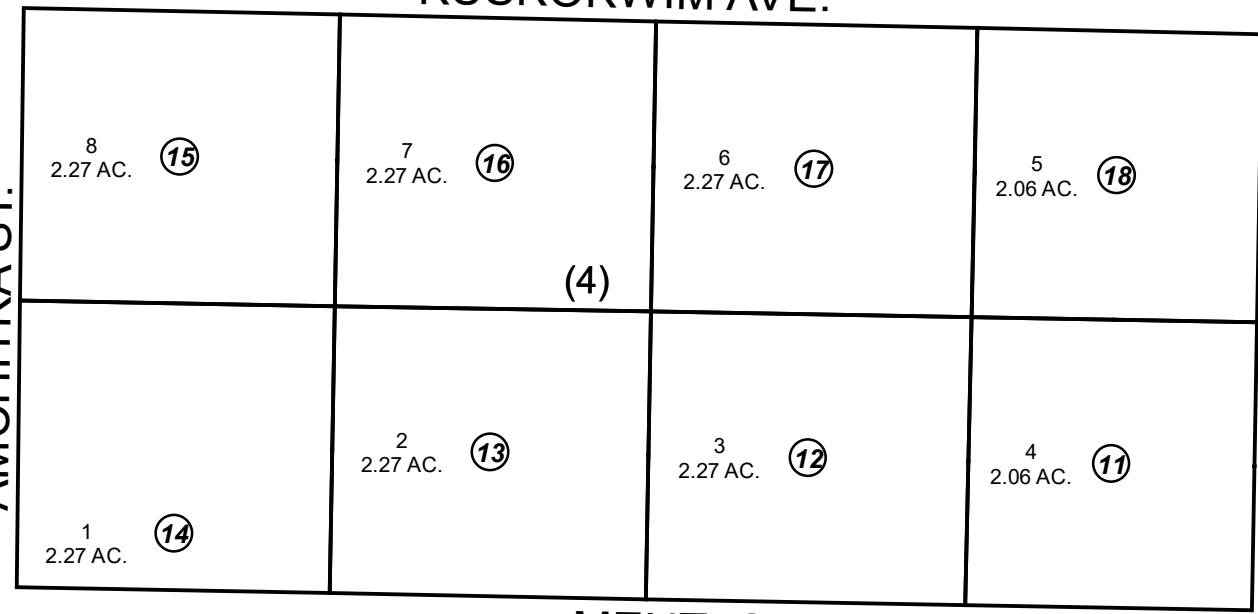


370

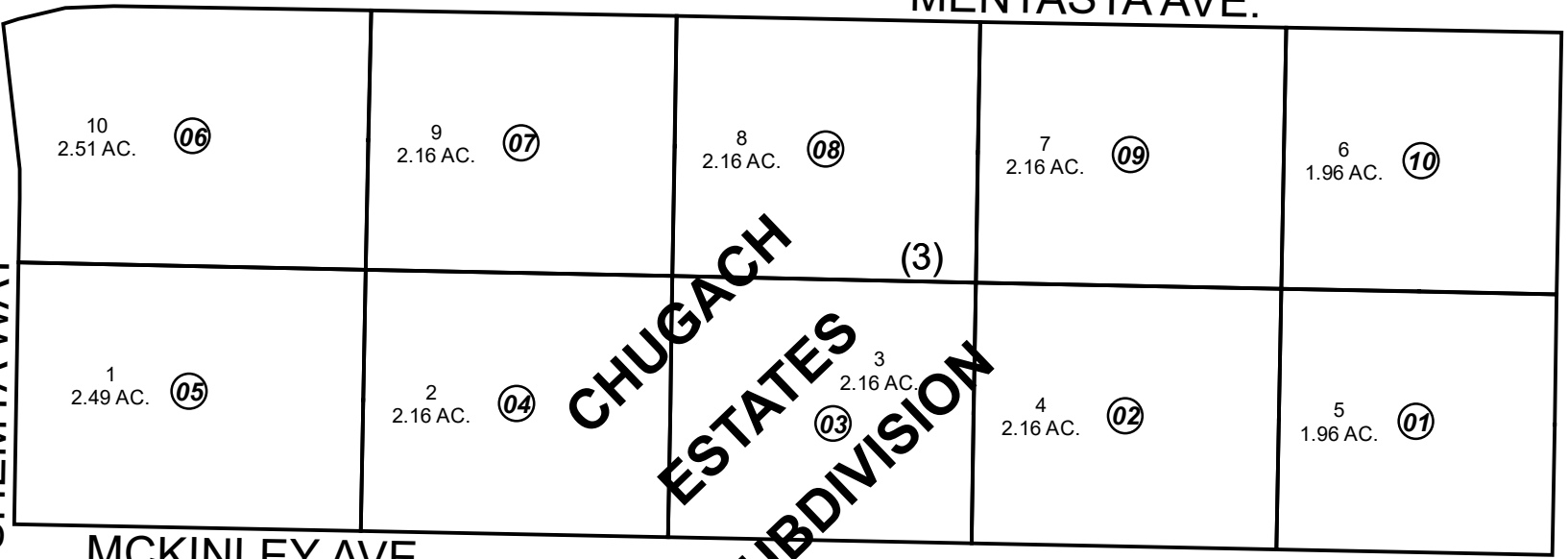
KUSKOKWIM AVE.



AMCHITKA ST.

PING ADDN.

MENTASTA AVE.



SHEMYA WAY

MCKINLEY AVE.

210

FROST ST.

330

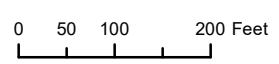
CHUGACH ESTATES SUBDIVISION

210

TYONEK CIR.

JANUARY 7 2019

For 2019 assessment roll		
Delete	Add	Revise
To		
20	26,27	



Assessor's Map
Kenai Peninsula Borough

CHUGACH ESTATE SUB KN0760010
CHUGACH ESTATE SUB PING ADDN KN2018098

This map is prepared for Kenai Peninsula Borough Assessing Dept. use only and is not intended for conveyance nor is it a survey.
Note- Assessor's block Numbers Shown in Ellipses
Assessor's Parcel Numbers Shown in Circles