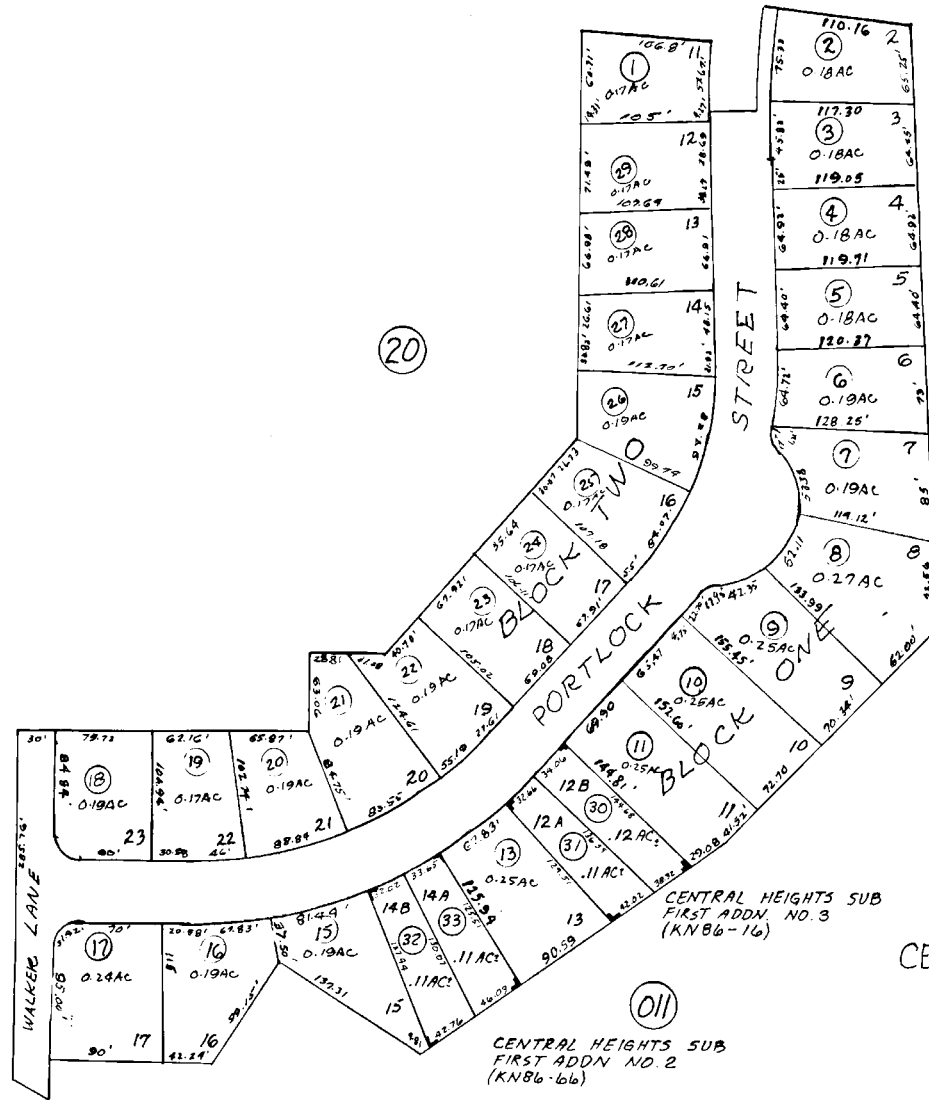


PTN. SW¼ NW¼ SEC. 4, T5N. R11W. S.M.

049-012



CENTRAL HEIGHTS SUB. FIRST ADD  
K-83-66

CENTRAL HEIGHTS SUB.  
FIRST ADDN NO. 2  
(KN86-666)

Assessor's Map  
Kenai Peninsula Borough, Alaska

NOTE - Assessor's Block Numbers Shown in Ellipses  
Assessor's Parcel Numbers Shown in Circles