

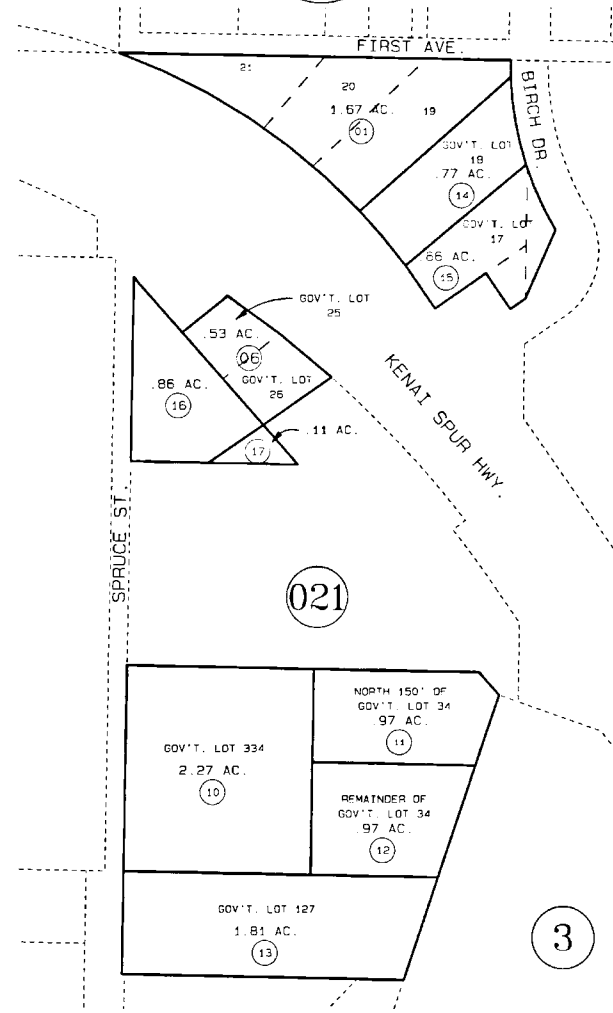
BK  
43

BK  
43

1

021

3



DATE: SEPT. 18, 1996

FOR 19 97 ASSESSMENT ROLL
DELETE    ADD    REVISED
TO
7,9    04702199

Assessor's Map  
Kenai Peninsula Borough

SELWAY-WILHELM BOUNDARY SURVEY    KN870064BS

THIS MAP IS PREPARED FOR KENAI PENINSULA BOROUGH ASSESSING DEPT USE ONLY AND IS NOT INTENDED FOR ANY OTHER USE OR REPRESENTATION

NOTE - Assessor's Block Numbers Shown In Ellipses  
Assessor's Parcel Numbers Shown In Circles