

SECTION 4, T4S, R10W, SEWARD MERIDIAN

185-255

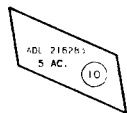
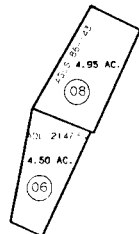
121

254

256

4

252



PORTION BLM TRACT A
821.784 AC.

64



DATE: AUGUST 16, 1993

FOR 19 94 ASSESSMENT ROLL		
DELETE	ADD	REVISED
TO		
2,11	64	

ASLS 86-143

HM88-25

NOTE - Assessor's Block Numbers Shown In Ellipses
Assessor's Parcel Numbers Shown In Circles

Assessor's Map
Kenai Peninsula Borough

THIS MAP IS PREPARED
FOR KENAI PENINSULA
BOROUGH ASSESSING DEPT.
USE ONLY AND IS NOT
INTENDED FOR ANY
OTHER USE OR REPRESENTATION