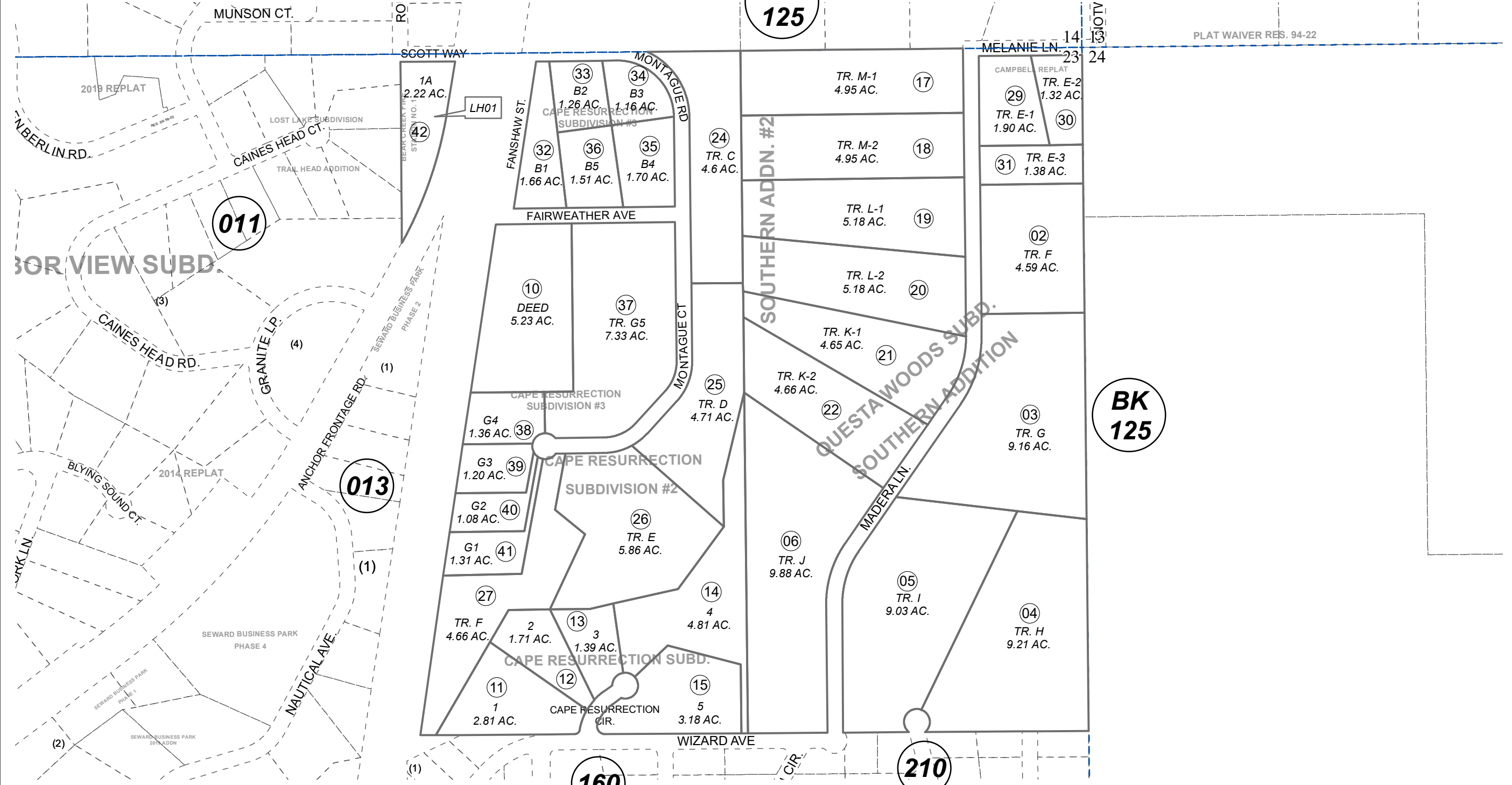


POR. SEC. 23, T01N, R01W, S.M.

**BK
125**

144-012



JANUARY 21, 2021

For 2021 assessment roll		
Delete	Add	Revise
To		42
	(LEASHOLD ADDED)	

Assessor's Map
Kenai Peninsula Borough

QUESTA WOODS SUB SOUTHERN ADDN SW0980001
 CAPE RESURRECTION SUB SW0980008
 QUESTA WOODS SUB SOUTHERN ADDN #2 SW0990011
 CAPE RESURRECTION SUB #2 SW2006019
 QUESTA WOODS SUB SOUTHERN ADDN CAMPBELL REPLAT SW2007012
 CAPE RESURRECTION SUB #3 SW2008005
 BEAR CREEK FIRE STATION 2013 REPLAT SW2013005

This map is prepared for Kenai Peninsula Borough Assessing Dept. use only and is not intended for conveyance nor is it a survey.
 Note- Assessor's block Numbers Shown in Elipses
 Assessor's Parcel Numbers Shown in Circles

