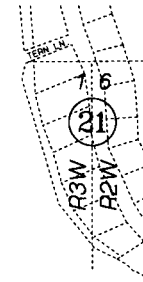
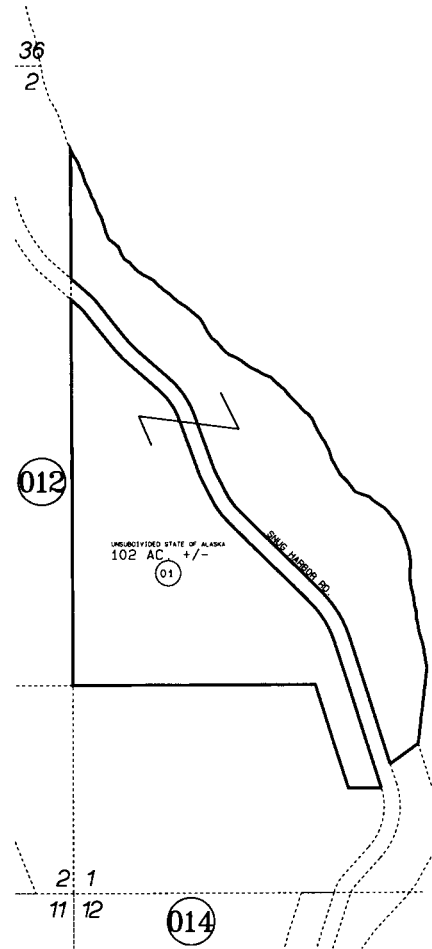


SEC. 1, T4N, R3W, SEWARD MERIDIAN

119-122



KENAI
LAKE



DATE: APRIL 22, 1998

FOR 1998 ASSESSMENT ROLL

DELETE	ADD	REVISED
--------	-----	---------

TO 01
(ACREAGE CHANGE)

Assessor's Map
Kenai Peninsula Borough

THIS MAP IS PREPARED
FOR KENAI PENINSULA
BOROUGH ASSESSING DEPT.
USE ONLY AND IS NOT
INTENDED FOR ANY
OTHER USE OR REPRESENTATION
NOTE - Assessor's Block Numbers Shown In Ellipses
Assessor's Parcel Numbers Shown In Circles