

SEC. 6, T4N, R2W, SEWARD MERIDIAN

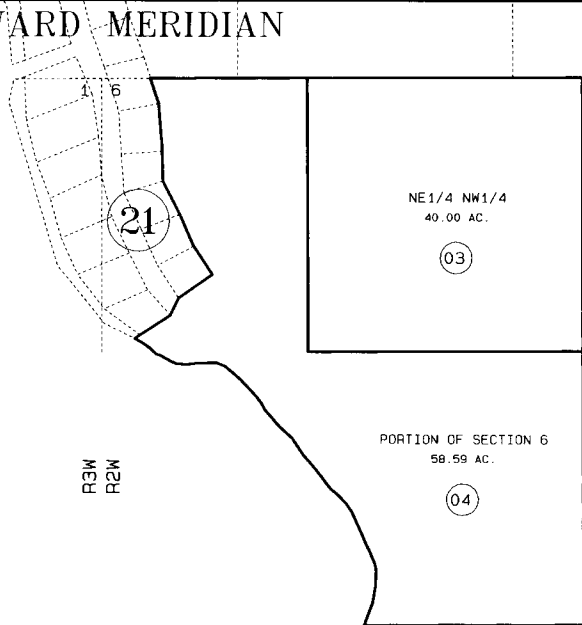
123

119-121

T5N
T4N

31 32

6 5



R3W
R2W

KENAI LAKE

011



DATE: APRIL 17, 1997

FOR 19 97 ASSESSMENT ROLL

DELETE	ADD	REVISED
TO		
01	03,04	

Assessor's Map
Kenai Peninsula Borough

011

6 5
7 8

THIS MAP IS PREPARED
FOR KENAI PENINSULA
BOROUGH ASSESSING DEPT.
USE ONLY AND IS NOT
INTENDED FOR ANY
OTHER USE OR REPRESENTATION

NOTE - Assessor's Block Numbers Shown In Ellipses
Assessor's Parcel Numbers Shown In Circles