

W 1/2 SW 1/4 SEC. 32, T02N, R12W, S.M.

137-220

CLAM GULCH BLUFFS KN7500135
CLAM GULCH BLUFFS NO 2 KN2001068

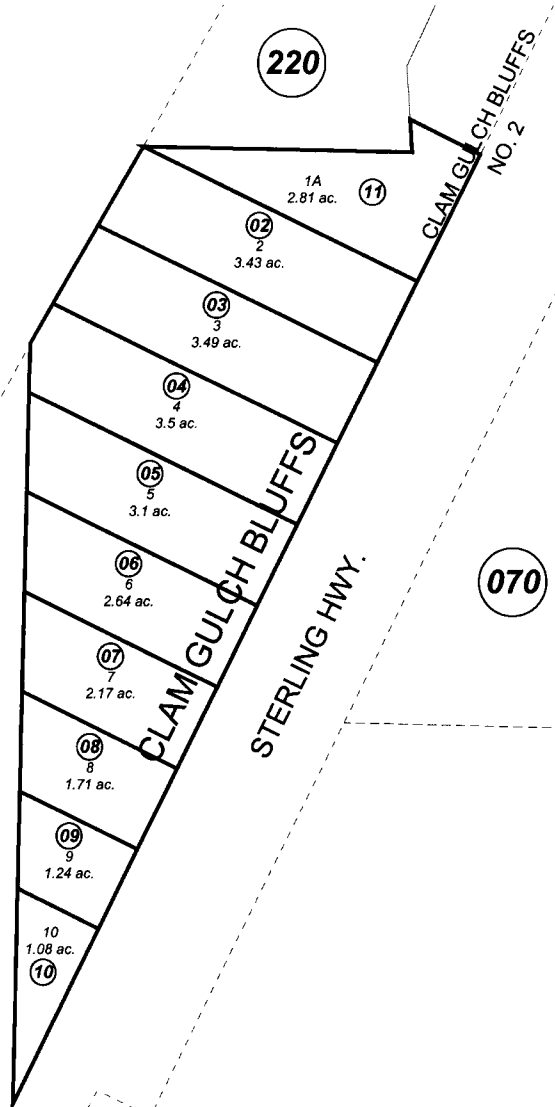


DECEMBER 7, 2001

For 2002 assessment roll

Delete	Add	Revise
To		
1		11

Assessor's Map
Kenai Peninsula Borough



This map is prepared for Kenai Peninsula Borough Assessing Dept. use only and is not intended for conveyance nor is it a survey.
Note- Assessor's block Numbers Shown in Ellipses
Assessor's Parcel Numbers Shown in Circles