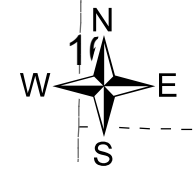
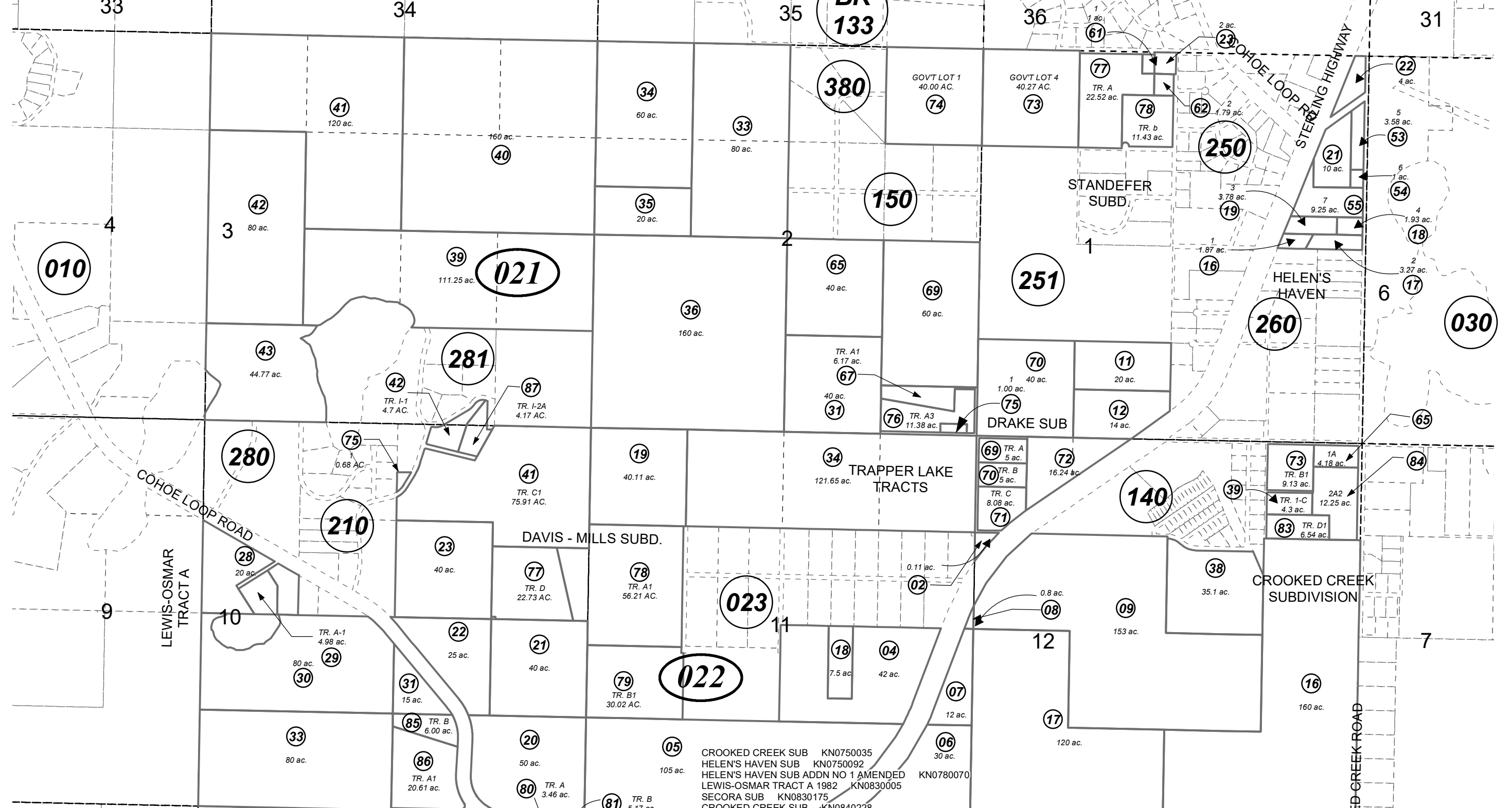


SEC. 1-3 & 10-12, T02N, R12W, S.M.

137-021 & 137-022



0 500 1,000 Feet

DECEMBER 27, 2020

For 2021 assessment roll		
Delete	Add	Revise
To		
02243	02287	

Assessor's Map  
Kenai Peninsula Borough

- CROOKED CREEK SUB KN0750035
- HELEN'S HAVEN SUB KN0750092
- HELEN'S HAVEN SUB ADDN NO 1 AMENDED KN0780070
- LEWIS-OSMAR TRACT A 1982 KN0830005
- SECORA SUB KN0830175
- CROOKED CREEK SUB KN0840228
- CROOKED CREEK SUB-MARSH 1984 SUB OF KN0840228
- CROOKED CREEK 1977 SUB OF TRACT A KN0850108
- TRAPPER LAKE TRACTS # 2 KN0990048
- DRAKE SUB KN2001011
- CROOKED CREEK SUB 2003 ADDN KN2004083
- CROOKED CREEK SUB 2004 ADDN KN2005025
- DAVIS - MILLS SUB KN2007057
- MEYER CHARLIE SUB KN2009008
- DAVIS-MILLS SUB #2 KN2015095
- ALASKA STATE LAND SURVEY 2015-39 KN2018008
- CROOKED CREEK SUB MARRE REPLAT KN2018029
- TRAPPER LAKE ESTATES YANCY ADDN KN2018085
- STANDEFER SUB KN2019078
- SQUIRREL HEAVEN KN2020068
- DAVIS-MILLS SUB #3 AND SECTION LINE EASEMENT VACATION PLAT KN2020077

This map is prepared for Kenai Peninsula Borough Assessing Dept. use only and is not intended for conveyance nor is it a survey.

Note- Assessor's block Numbers Shown in Elipses  
Assessor's Parcel Numbers Shown in Circles