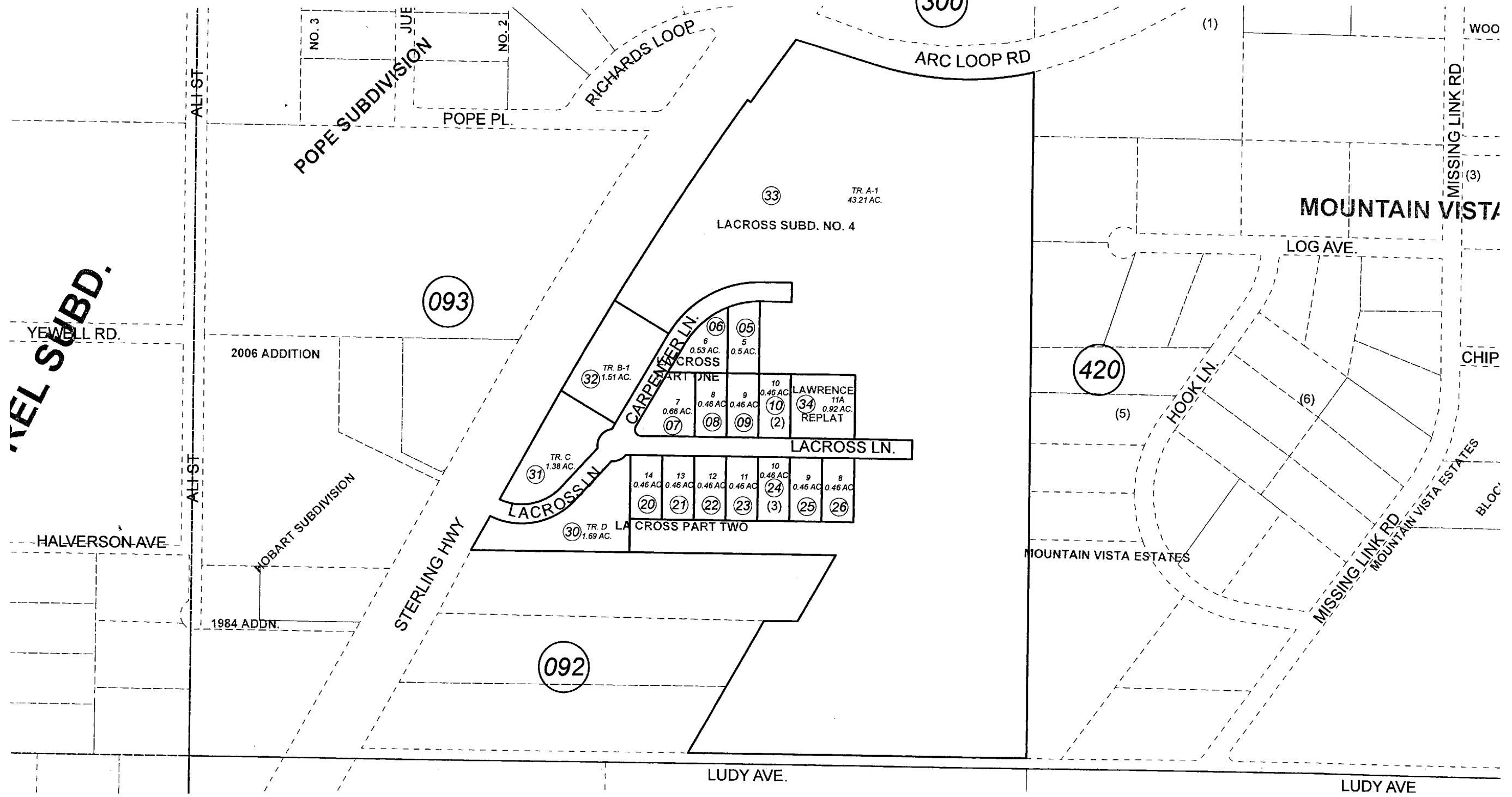


POR. SW1/4 SEC. 23, T04N, R11W, S.M.

131-280



VELOC SUBD.



NOVEMBER 20, 2009

For 2010 assessment roll

Delete	Add	Revise
To		
11,12	34	

Assessor's Map
Kenai Peninsula Borough

LACROSS SUB PART 1 KN0001720
 LACROSS SUB PART 2 KN0770186
 LACROSS SUB NO 4 KN2005125
 LACROSS SUB PART 1 LAWRENCE REPLAT KN2009073

This map is prepared for Kenai Peninsula Borough Assessing Dept. use only and is not intended for conveyance nor is it a survey.
 Note- Assessor's block Numbers Shown in Ellipses
 Assessor's Parcel Numbers Shown in Circles

170

093

092

420

300