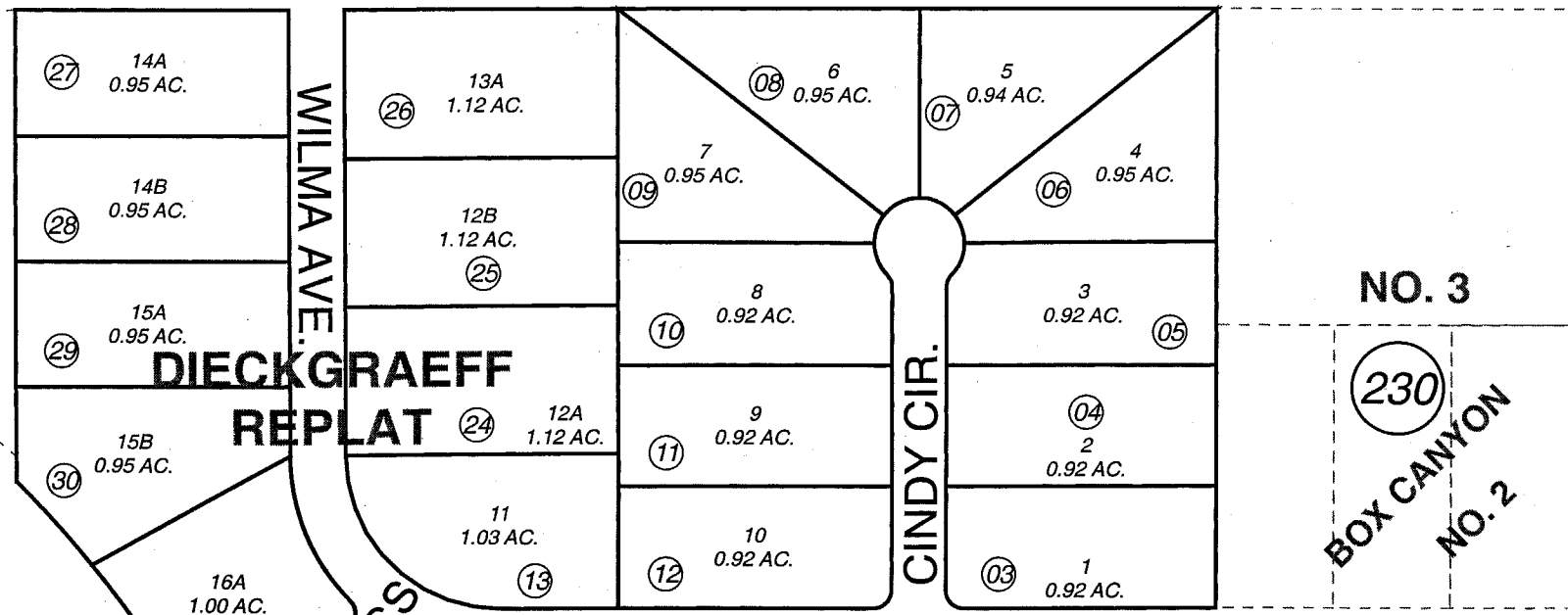


POR. SEC. 22, T01N, R01W, S.M.

010

144-220

350



NO. 3

230

BOX CANYON NO. 2

OLD EXIT GLACIER RD.

BOX CANYON-GE WHITEY'S I

230

WILMA BYPASS

EXIT GLACIER RD.

WILMA AVE.

RONNIE'S ADDITION

20A 1 AC, 20B 1 AC

GEN

G.B.S.T. REPLAT

GENTLES SUBDIVISION

FJORDS SUBD.

010

DATE: Jan 31, 2005

For 2005 assessment roll		
Delete	Add	Revise
To		
14-20	24-35	



Assessor's Map Kenai Peninsula Borough

GENTLES SUB SW0810006
 GENTLES SUB RONNIES ADDN SW0850008
 GENTLES SUB DIECKGRAEFF REPLAT SW2004022

This map is prepared for Kenai Peninsula Borough Assessing Dept. use only and is not intended for conveyance nor is it a survey.

Note- Assessor's block Numbers Shown in Ellipses
 Assessor's Parcel Numbers Shown in Circles