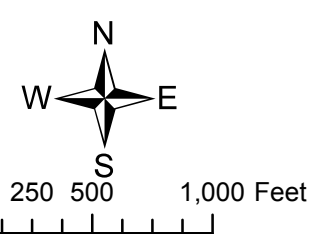
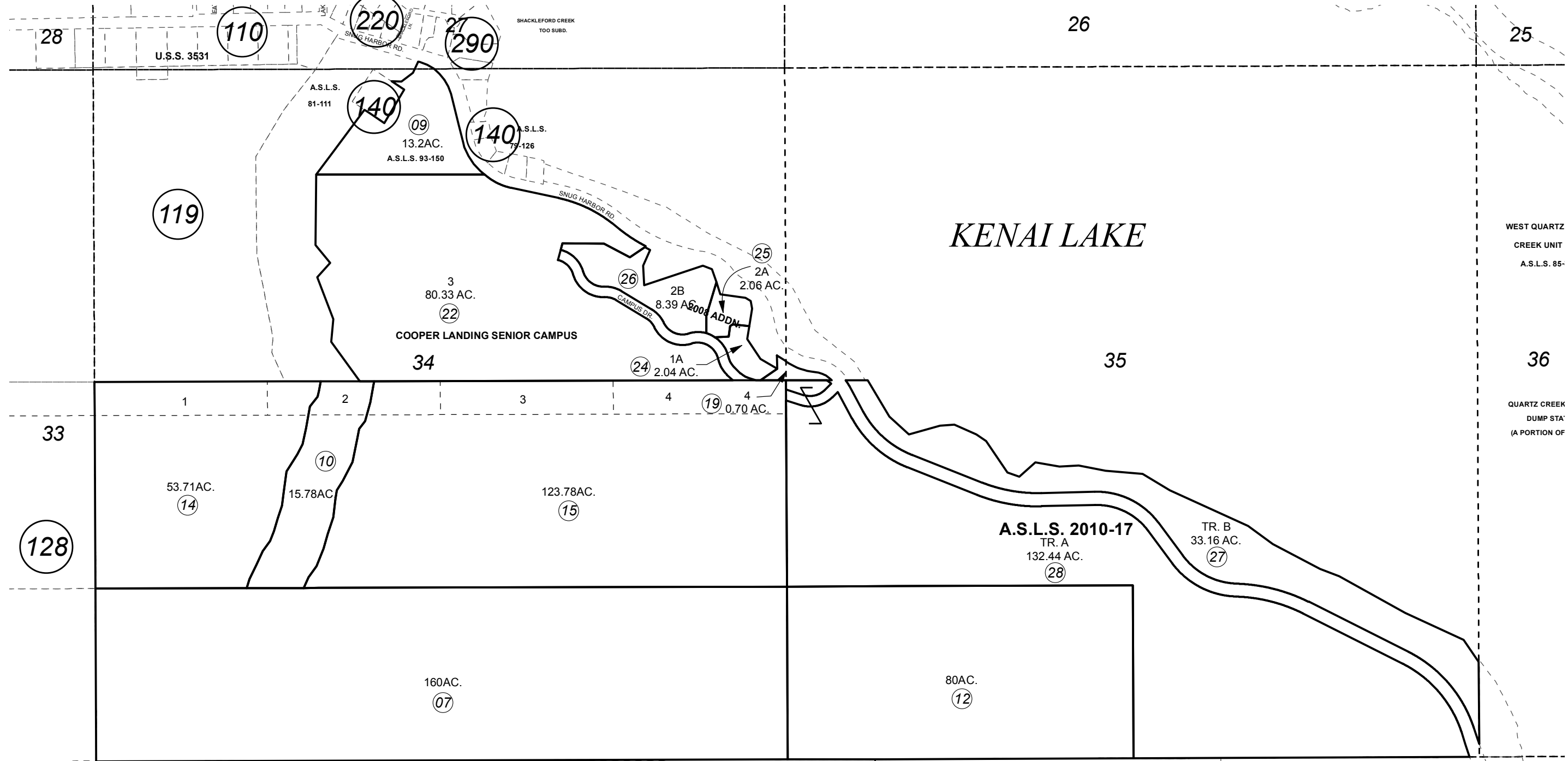


SEC. 34 & 35, T05N, R03W, S.M.

119-120



DECEMBER 29, 2016

For 2017 assessment roll		
Delete	Add	Revise
To		
13,17	27,28	

Assessor's Map
Kenai Peninsula Borough

US SURVEY 5105 SW0005105
 ALASKA STATE LAND SURVEY 93-150 SW0950032
 COOPER LANDING SENIOR CAMPUS SUB SW2005024
 COOPER LANDING SENIOR CAMPUS 2008 ADDN SW2008012
 ALASKA STATE LAND SURVEY 2010-17 SW2016011

Note- Assessor's block Numbers Shown in Ellipses
 Assessor's Parcel Numbers Shown in Circles

This map is prepared
 for Kenai Peninsula
 Borough Assessing Dept.
 use only and is not
 intended for conveyance
 nor is it a survey.