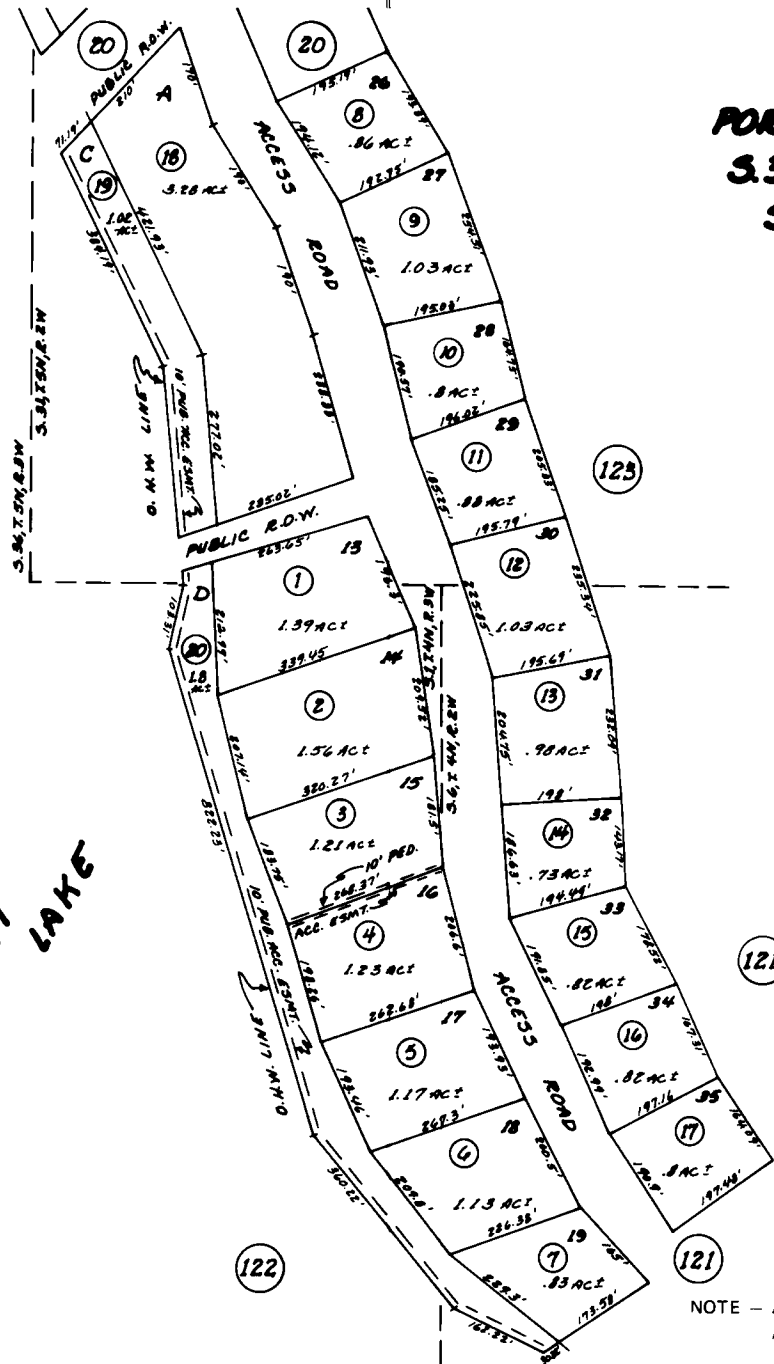


PORTIONS  
S.31,T.5N,R.2W  
S.1,T.4N,R.3W  
S.6,T.4N,R.2W  
S.M.

KENAI LAKE



ASLS 85-339  
EAST QUARTZ CREEK UNIT  
87-3

Assessor's Map  
Kenai Peninsula Borough, Alaska

NOTE - Assessor's Block Numbers Shown in Ellipses  
Assessor's Parcel Numbers Shown in Circles