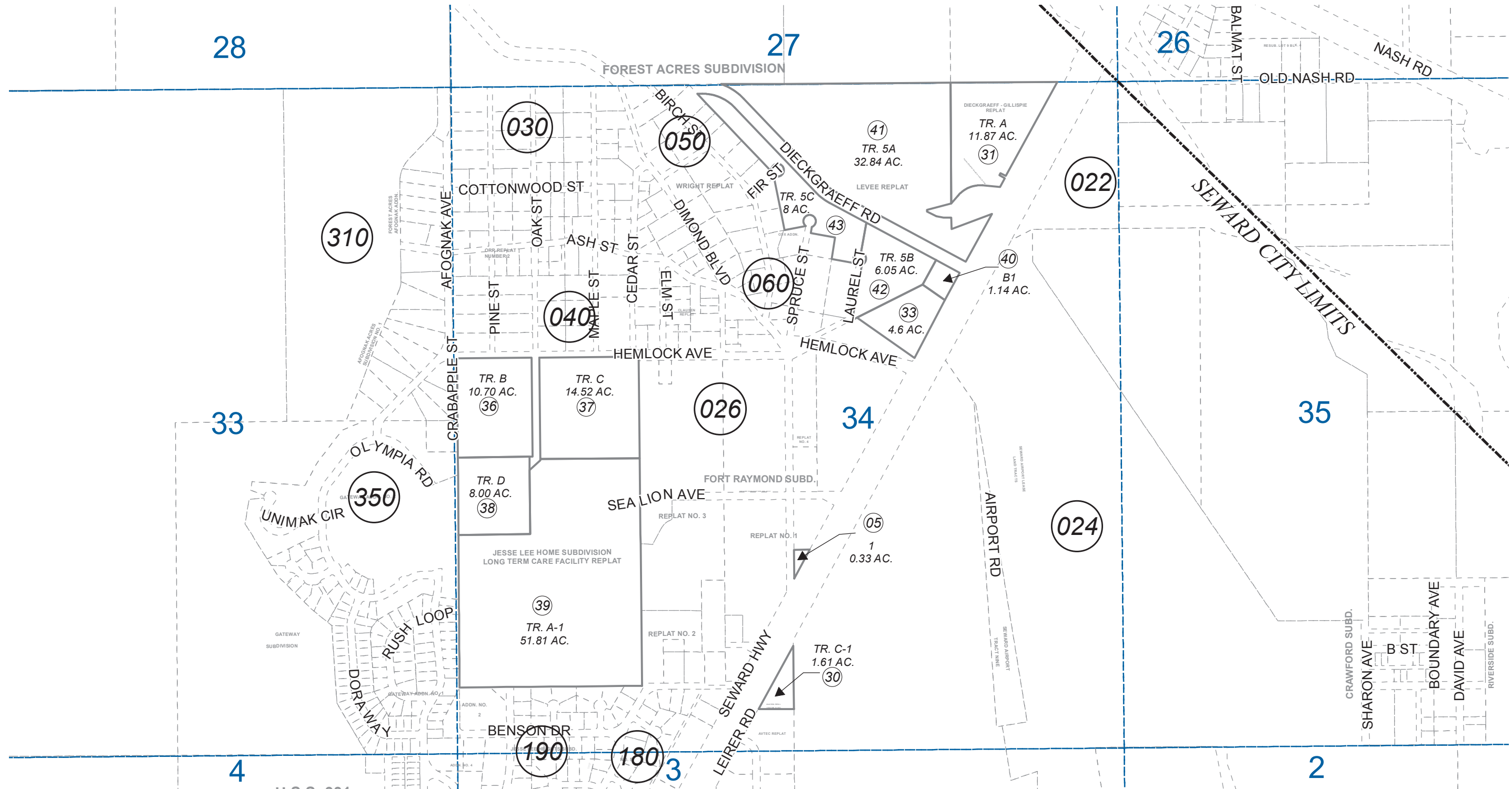


POR. SEC. 34, T01N, R01W, S.M.

145-021



0 400 800 Feet

AUGUST 31, 2016

For 2017 assessment roll		
Delete	Add	Revise
To		31
(ACREAGE REVISION)		

Assessor's Map
Kenai Peninsula Borough

USS 149 SW0000149
 USS 1864 SW0001864
 ALASKA SKILL CENTER SW0750001
 DIECKGRAEFF-GILLESPIE REPLAT SW0940012
 JESSE LEE HOME SUB LONG TERM CARE FACILITY REPLAT SW2007021
 FOREST ACRES SUB LEVEE REPLAT SW2012017
 SEWARD HWY MP 0-8 RIGHT OF WAY MAP SW2013001

This map is prepared for Kenai Peninsula Borough Assessing Dept. use only and is not intended for conveyance nor is it a survey.

Note- Assessor's block Numbers Shown in Ellipses
 Assessor's Parcel Numbers Shown in Circles