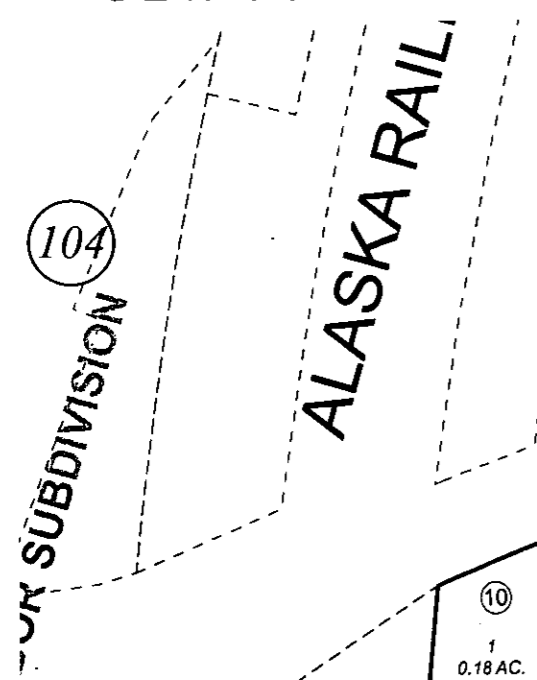


SEWARD SMALL BOAT HARBOR VICINITY, T01S, R01W, S.M.

145-240

R/W NAME CHANGED BY SEW. RES. 90-008



ICICLE SEAFOODS REPLAT

(250)

NORT
PORT AVE. (FORMERLY OLD AIRPORT RD.)

MARINA SUBDIVISION

(2)

(15)
2A
2.61 AC.

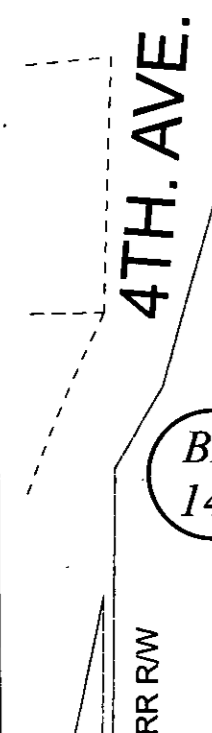
(16)
3A
2.28 AC.

COAST GUARD REPLAT

(20)
4A-2
0.64 AC.

(19)
4A-1
3.93 AC.

(025)



(10)
1
0.18 AC.

SEWARD SMALL
BOAT HARBOR

(21)
4B
0.06 AC.



(22)
TR. A
0.06 AC.



SEWARD
RESORT ADDN.



0 25 50 100 Feet

OCTOBER 6, 2010

For 2011 assessment roll		
Delete	Add	Revise
	To	
	22	

Assessor's Map
Kenai Peninsula Borough

MARINA SUB BLOCK 2 SW0890010
MARINA SUB BLOCK 2 REPLAT SW0960028
LEASE L1 RESIDES ON PARCEL 145-240-21
MARINA SUB COAST GUARD REPLAT SW2010009
MARINA SUB SEWARD RESORT ADDN SW2010010

This map is prepared for Kenai Peninsula Borough Assessing Dept. use only and is not intended for conveyance nor is it a survey.
Note- Assessor's block Numbers Shown in Ellipses
Assessor's Parcel Numbers Shown in Circles