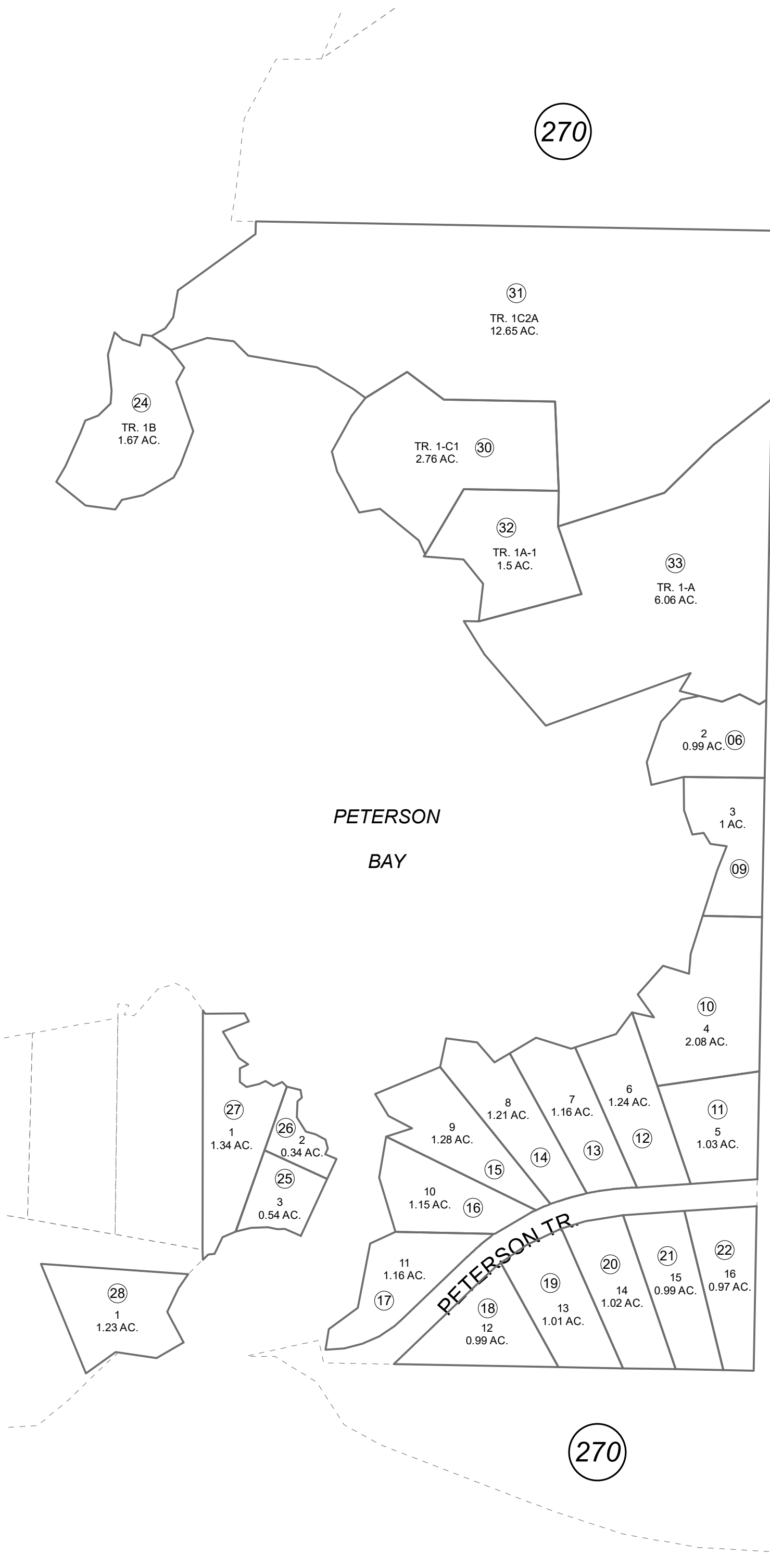


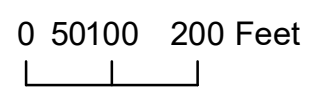
POR. SE1/4 SEC. 14, T07S, R12W, S.M.

193-420



JANUARY 20, 2023

For 2022 assessment roll	
Delete	Add
	Revise
To	25-27
(REVISED ACREAGE)	



J MOSS SUB HM0730715
 CLAUSEN SUB RESUB OF J MOSS SUB ADDN NO HM0790135
 CLAYTON SUB HM0800031
 CLAYTON SUB UNIT 1 HM0850004
 CLAYTON SUB UNIT 2 HM0860055
 CLAUSEN SUB NO 2 HM0880035
 BAGLEY COVE SUB HM0890020
 CLAUSEN SUB NO 3 HM0920013
 CLAYTON SUB NO 3 HM2001031
 RECORD OF SURVEY HM2022019

Assessor's Map
 Kenai Peninsula Borough

270

270

270

This map is prepared for Kenai Peninsula Borough Assessing Dept. use only and is not intended for conveyance nor is it a survey.

Note- Assessor's block Numbers Shown in Ellipses
 Assessor's Parcel Numbers Shown in Circles