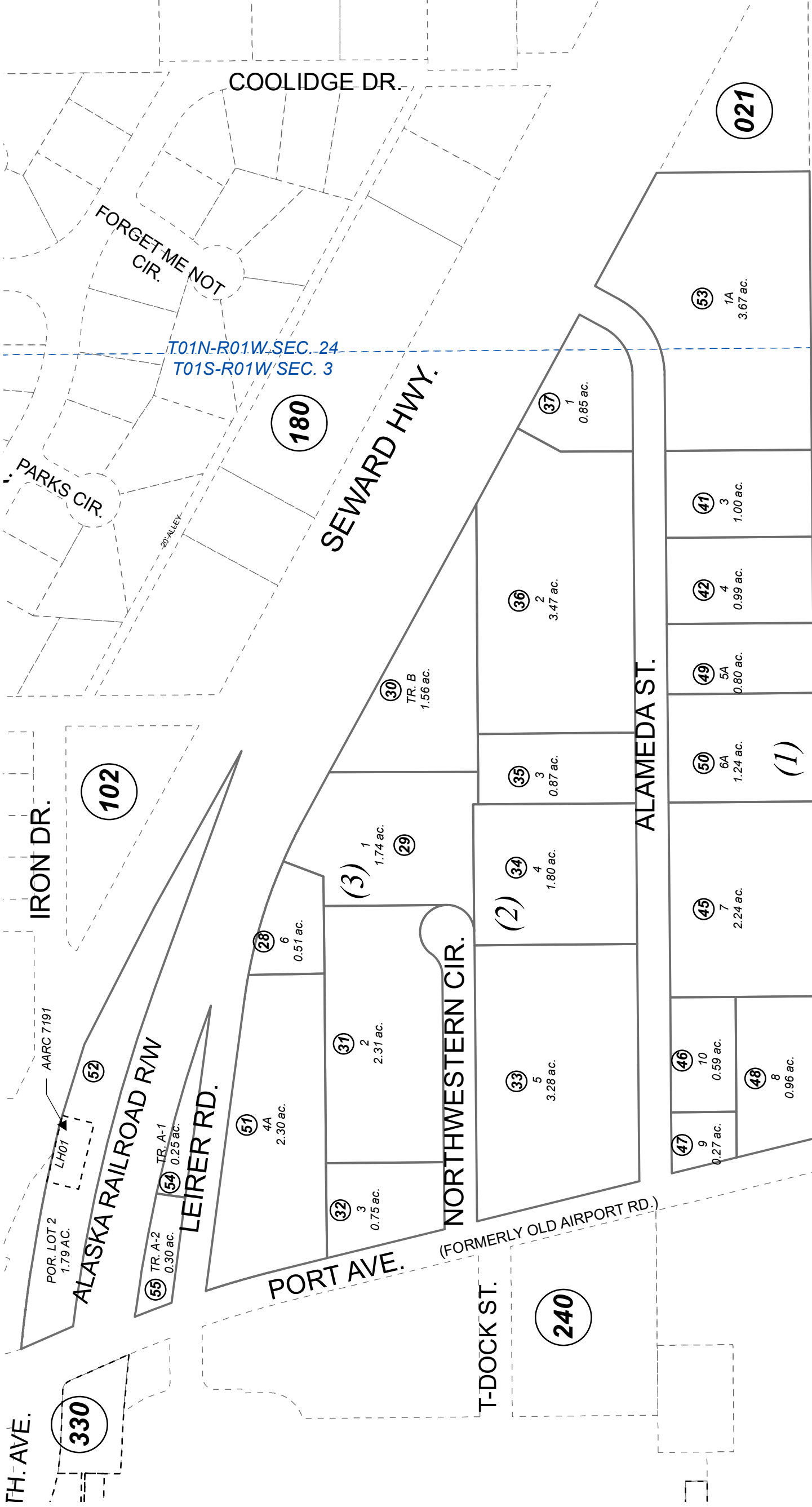


POR. SEC. 34, T01N, R01W & POR. NW1/4 SEC. 3, T01S, R01W, S.M. 145-250



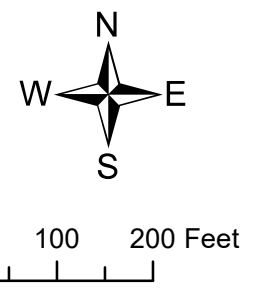
# BECKER REPLAT LEIRER INDUSTRIAL SUBDIVISION

025

This map is prepared for Kenai Peninsula Borough Assessing Dept. use only and is not intended for conveyance nor is it a survey.

Assessor's Map Kenai Peninsula Borough  
Note- Assessor's block Numbers Shown in Ellipses  
Assessor's Parcel Numbers Shown in Circles

LEIRER INDUSTRIAL SUB SW2002019  
LEIRER INDUSTRIAL SUB BECKER REPLAT SW2003012  
LEIRER INDUSTRIAL SUB ICICLE SEAFOODS REPLAT SW2007003  
LEIRER INDUSTRIAL SUB AVTEC REPLAT SW2014026  
LEIRER INDUSTRIAL SUB WALIEZER REPLAT SW2017002



OCTOBER 9, 2019	
For 2020 assessment roll	
Delete	Add
	Revise
To	