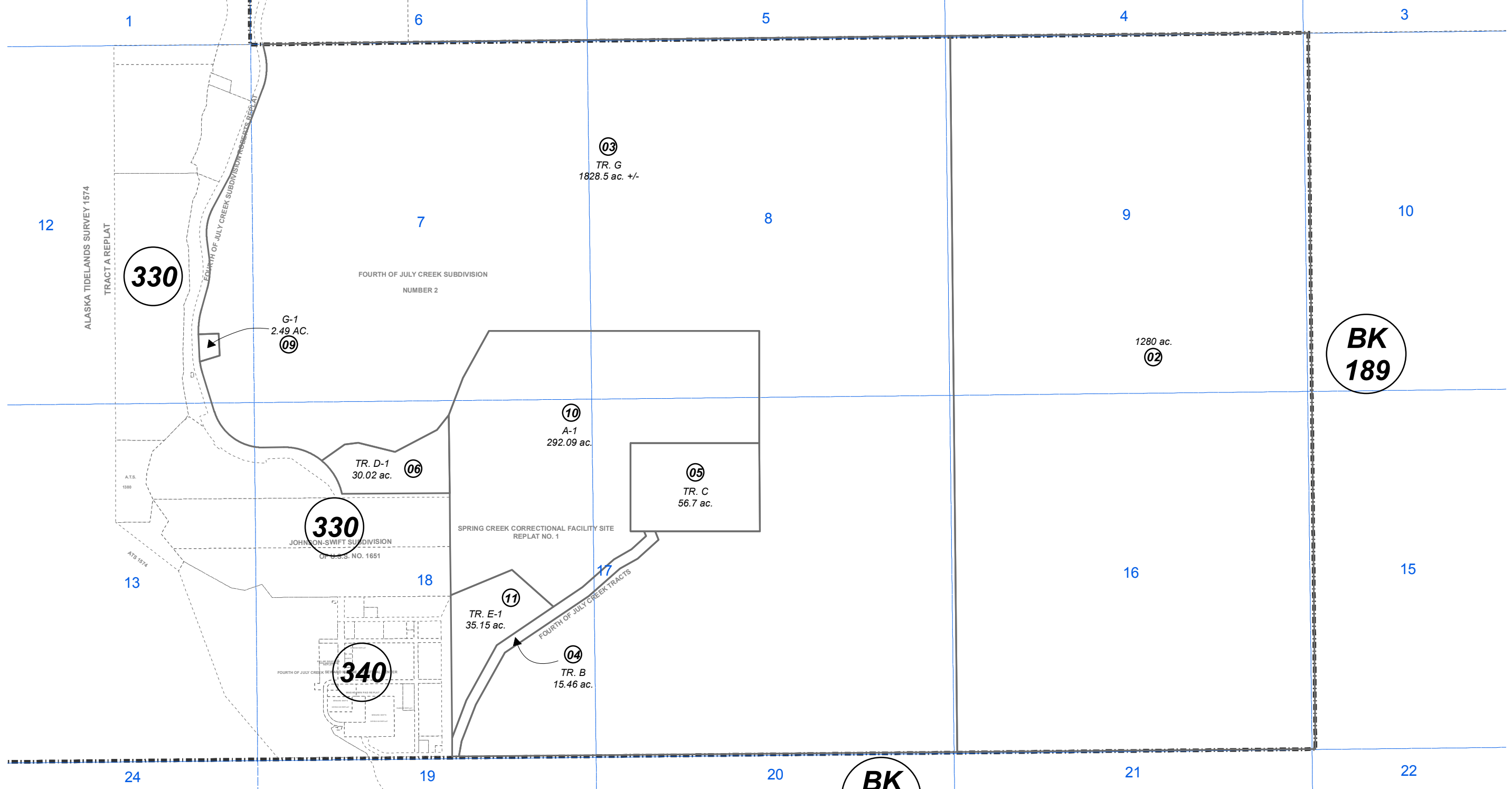


POR. SEC. 7-9 & 16-18 T01S, R01E, & SEC. 12, T01S, R01W, S.M. 145-320



JANUARY 10, 2017

For 2017 assessment roll		
Delete	Add	Revise
	To	
07,08	10,11	

Assessor's Map
Kenai Peninsula Borough

FOURTH OF JULY CREEK TRACTS SW0840006
 SPRING CREEK CORRECTIONAL FACILITY SW0840012
 FOURTH OF JULY CREEK SUB NO 2 SW0980004
 FOURTH OF JULY CREEK SUB NO 2 ANDERSON REPLAT SW2001004
 SPRING CREEK CORRECTIONAL FACILITY SITE REPLAT NO 1 SW2016008

Note- Assessor's block Numbers Shown in Elipses
 Assessor's Parcel Numbers Shown in Circles

This map is prepared for Kenai Peninsula Borough Assessing Dept. use only and is not intended for conveyance nor is it a survey.

